



BREAKING CONVENTION

**3rd International Conference on
Psychedelic Consciousness**



JULY 10-12 2015
UNIVERSITY OF GREENWICH, LONDON



CONTENTS

Abstracts (Alphabetically by Presenter)	1-23
Programme (Friday)	24-27
Programme (Saturday)	28-31
Programme (Sunday)	32-35
Installations	36
Special Events	37
Wasson Workshops	38-40
Film Festival	41-43
Visionary Art - Artists Bios	44-45
Performances	46
Evening Entertainments	47
Invited Speaker Bios	48-56
Sponsors	57-60
Contributors	61-62
Sponsors - Media Partners	63
Acknowledgements	64-65
University Map	66
Area Map	67
Venue Map	68-69
General Info	70
The Team	71
Notes	72-75

Break Times	
ALL DAYS	
11:00 - 11:30	Break
13:00 - 14:30	Lunch
16:30 - 17:00	Break

PRESENTER ABSTRACTS

Cameron Adams

Sabina Stage, Saturday 11th July, 16:00-16:30

Social Mediation of Psychedelic Phenomenology and the Interpretation of Emergent Properties.

Conspiracy theories have a large following among users of psychedelics. It is often attributed to waking up or to being able to see patterns others overlook. Likewise, psychedelics can occasionally induce paranoia. I explore the connection between these states and how they both may not be primary drug effects, but rather symptoms of more fundamental effects of society and culture upon the psychedelic experience.

Allan Badiner

Shulgin Sessions, Sunday 12th July, 15:00 - 15:30

Psychedelics in the Anthropocene.

This paper argues that the Anthropocene has ushered in a new enthusiasm for shamanic and psychedelic tools for evolution guided by system of ethics like Buddhism. A brief history of both psychedelics and Buddhism in the West is outlined, as well as how they have come together in the modern quest for personal evolution. There is a discussion about the increasing acceptance of psychedelics in the medical field, and references new directions in psychedelic research. Can psychedelics be an imperative for our survival? What else can offer the kind of potentiality for mental evolution and change with the rapidity required by the worsening health of the ecosystem?

Chiara Baldini

Sabina Stage, Sunday 12th July, 10:30-11:00

Her Share of Divine Madness: Women and the feminine in ancient ecstatic rituals.

Long before practices of altered states of consciousness were prohibited and forgotten all over Europe, there thrived a legacy of rituals, myths and cults centered on the ecstatic experience. In this presentation we explore the Mystery Religions, shamanic initiations into the mysteries of nature, which developed in Hellenistic Greece and were subsequently exported to the Roman Empire. In particular we look at the role that women played in these rituals and how did the religious practice of altering one's consciousness influence gender roles and identities, both in Greek and Roman society. Who were the maenads? How did they achieve the state of "divine madness"?

Martin W. Ball

Shulgin Sessions, Sunday 12th July, 14:30-15:00

5-MeO-DMT, Energy, the Ego, and Nonduality.

This presentation will focus on the nature of the ego as an illusory energetic construct and how it can be transcended via the energetic influx of entheogenic consumption, with particular emphasis placed on the uniquely powerful molecule of 5MeODMT. What lies beyond the artifice of identity is nondual universal consciousness that transcends the divides of subject and object, self and other. In this framework, entheogens are understood to provide an opportunity to release and relax the limited energetic patterns and habits of the ego, allowing individuals to experience their true universal nature.

Moudou Baqui

Osmond Auditorium, Friday 10th July, 11:30-12:00

The Purposeful Use of Entheogens for the Examination, Investigation and Creation of Human Archetypes.

Examining sources both ancient and modern, Baba Moudou Baqui investigates the idea of manipulation of the human psyche through the use of entheogens for both enlightenment and more nefarious purposes. Could the notion of "traditional warfare" as referenced by indigenous African people refer to the entering into the shamanic realm to engage in resisting nefarious and malicious forces? The focus of Baba Moudou Baqui's presentation will take a look at the purposeful use of entheogens for the examination, investigation and creation of human archetypes. The presentation will delve into ancient and modern references that consider the higher application of Shamanic practices to bring balance into the collective human psyche.

Alexander Beiner

Shulgin Sessions, Sunday 12th July 17:00-17:30

The Psychedelic Shadow.

This talk will examine the different ways in which the ego and individualism are viewed in the psychedelic community. I'll draw attention to the influence of the eastern contemplative traditions in the community, and whether this can create a shadow around the ego itself. The talk will also draw on my experiences teaching mindfulness meditation and studying shamanism, examine the importance of shadowwork when using psychedelics for psycho-spiritual growth, and the fallacy of attempting to 'transcend' the ego without first integrating the shadow.

PRESENTER ABSTRACTS

Zachary Bellman

Hofmann Hall, Friday 10th July, 09:30-10:00

On Molluscs, Man & Psychedelia: The necessity of skeptical mantras in the orchestration of psychedelic studies in neuroscience.

This talk will outline the importance of the cellular & molecular reductionist approach to neuroscience. I want to draw attention to its value in historical studies such as those in learning and memory research in invertebrates; by example of the pioneering studies performed by Eric Kandel and colleagues from the late 1960's onwards which is hugely influential and continues to this day. I propose the idea that it is necessary to study psychedelics using a reductionist molecular biology framework, complementary to investigations in psychiatry, in order for psychedelic studies to traverse from the 'fringe' into the 'mainstream' of science and ultimately society.

Darryl Bickler

Shulgin Sessions, Friday 10th July, 12:00-12:30

New Moral Agencies and Strict Liabilities.

If we use the evidence of the proposed new legislation, the reform movement in the UK has failed miserably. Not an inch on cannabis use, nothing but liberties denied by a society hugely naïve as to what's at stake. Ask yourself, why should "I" endure this censorship of being alive; why would anyone? Human Rights constructs don't even consider our fundamental choices for everyday and transformative experiences. Expert bodies are gaining greater access via licensed studies, but it's a case of two steps backwards for everyone else. What can be done to rescue the subject?

Melissa Bone

Hofmann Hall, Friday 10th July, 14:30-15:00

Human Rights, Public Health & Medicinal Cannabis Use

This paper explores the interplay between the human rights and drug control frameworks and critiques case law on medicinal cannabis use to demonstrate that a bona fide human rights perspective allows for a broader conception of 'health'. The paper also demonstrates how a human rights lens can alleviate a core tension between the State and the individual within the drug policy field. The leading medicinal cannabis case in the UK highlights the judiciary's failure to engage with an individual's human right to health as they adopt an arbitrary, externalist view, focussing on the legality of cannabis to the exclusion of other concerns.

Raph Borges

Osmond Auditorium, Saturday 11th July, 15:30-16:00

Unraveling the Vines: Phytochemical Analysis from the DMT-Nexus.

Despite numerous published scientific papers and anecdotal reports indicating the presence of DMT in a wide variety of plants, there is much ambiguity, contradiction, and speculation regarding the actual chemical composition of many of these plants. Discussions of indigenous preparations, which include DMT-containing plants, often treat the phytochemistry of the β -carboline-containing plants as fairly uniform. However, new examinations of these plants, utilizing modern analytical techniques, have shown them to contain a variety of compounds in differing ratios.

Luke Brown

Hofmann Hall, Sunday 12th July, 16:00-16:30

Visionary Art, Entheogens & Spiritual Development.

Luke Brown, an adventurous psychonautical explorer, is part of a new generation of visionaries reconstructing the templates of culture as we know it. This talk will present an overview of his life's work with some in depth descriptions of particularly significant works and the inseparable role that entheogens have played on his creative and spiritual development. The visionary art movement generally agrees that acceptance of extraordinary states of consciousness are an essential part of becoming a holistic person and that this inner exploration leads to profound vision, spiritual insight and creative novelty.

Robin Carhart-Harris

Hofmann Hall, Sunday 12th July, 10:00-10:30

Psychedelics in Science and Medicine.

This talk will detail my latest research with psychedelic drugs with a focus on a recently completed LSD neuroimaging study (fMRI and MEG). I will attempt to describe some key principles by which psychedelic drugs alter brain function to alter consciousness and this will be linked in with their potential therapeutic application. Some preliminary data from an ongoing psilocybin for depression trial will also be presented.

PRESENTER ABSTRACTS

Tharcila Chaves

Shulgin Sessions, Friday 10th July, 14:30-15:00

Ketamine for Depression: A Pill for All Pains?

With current treatments, over 30% of patients with major depressive disorder (MDD) do not achieve remission. After having followed all of the consecutive treatment steps, including electroconvulsive therapy (ECT), around 20% have treatmentresistant depression (TRD). Current pharmacological treatment options require weeks to produce a therapeutic response. Recent studies with ketamine administration show immediate effects, but with shortterm success, in patients with TRD. Studies in patients with different types of pain have used different ketamine applications for longer time periods. This experience may be relevant for psychiatric indications.

Matthew Clark

Osmond Auditorium, Saturday 11th July, 12:00-12:30

Soma and Ayahuasca (Part 2).

Two years ago, at Breaking Convention 2013, I presented a paper on my research into the botanical identity of the plant soma/haoma. This plant (or plants) is sacred in the ancient religious texts of both Zoroastrians and the Brahmins of South Asia. Many dozens of theories concerning its botanical identity have been proposed over the last 250 years. I suggested that soma/haoma was most probably a concoction of plants that acted as an ayahuascalike analogue. My research has continued for the last two years, the paper has expanded into a short book, and more evidence has emerged that seems to corroborate my original hypothesis.

John Constable

Shulgin Sessions, Sunday 12th July, 17:30-18:00

Acid Mediumship - Goose and Crow.

John Constable's seminal work 'The Southwark Mysteries' channels the secret history and transforming vision of The Goose, the spirit of a sex worker from the medieval Liberty of the Clink. These hermetic teachings were revealed to John Crow, Constable's shamanic alter ego - under the influence of 'an heroic dose of LSD' on the genesis of the work and how The Goose initiated John Crow into her idiosyncratic system of mediumship. He compares this work with his firsthand experiences of Santo Daime, Umbanda and other traditions. The talk goes on to consider how to prepare and protect oneself when using LSD and other psychoactive sacraments to channel the spirits.

Mike Crowley

Shulgin Sessions, Saturday 11th July, 14:30-15:00

Were Mushrooms a Women's Secret?

It is suggested that in the ancient cultures of India and Greece, the use of psychedelic mushrooms was originally restricted to women. In particular, the myths of Krishna, Birkuar and Dionysus are examined. It is claimed that each of these gods represented psychoactive mushrooms. It is also noted that each god was attended by bands of women, respectively called gopini (dairymaids) - dain (witches), and maenads ("crazies"). All three gods have legends in which they spy upon women's secret rites. So many parallels are observed between these three legends that a common source is proposed.

Val Curran

Hofmann Hall, Friday 10th July, , 16:00-16:30

Cannabis: medicine, pleasure, madness?

Cannabis, increasingly a recognised medicine in many countries, now stands poised to join alcohol and tobacco as a legal drug. Quantifying the relative beneficial and adverse effects of various types of cannabis and their constituent cannabinoids should therefore be a top priority for neuroscience as well as medicine. Links have been made between cannabis and psychosis, addiction and cognitive changes, although whether cannabis is causal and how long its effects last are fiercely debated. Identifying why some individuals but not many others are vulnerable to cannabisinduced harms is of crucial importance to both medicinal and recreational users.

Cyriak

Hofmann Hall, Sunday 12th July, 15:00-15:30

Breaking the Mirror.

Cyriak will be looking at how psychedelic art extends beyond drug culture and relates to the process of our perception, and gives insight into how we understand the world around us by breaking the mirror through which we observe reality.

Alicia Danforth

Hofmann Hall, Saturday 11th July, 15:00-15:30

MDMA-assisted Therapy for Social Anxiety in Autistic Adults.

The first randomized, doubleblinded, placebocontrolled study of MDMAassisted therapy for the treatment of social anxiety in autistic adults commenced in 2014. Fear and avoidance behaviors associated with social anxiety interfere with ability to work, attend school, and develop relationships. The search for psychotherapeutic options for autistic adults who want to improve social adaptability is imperative considering the lack of effective conventional treatment options for this population. This talk will feature an overview of the rationale and method for this pilot study as well as a progress update.

PRESENTER ABSTRACTS

Robert Dickins

Hofmann Hall, Saturday 11th July, 09:30-10:00

LSD Poetics and the Everyday.

While many poets no doubt took LSD during its heyday, within both psychiatric and recreational contexts, remarkably little was actually published that explicitly dealt with the LSD experience. However, what was published describes a cultural explosion that was both imbued with, and critical of, the everyday world. Taking both popular and obscure examples, this talk will combine poetic readings with an examination of the manner in which poets were using LSD as a comment on not only themselves, but the wider world in which they found themselves.

Meriana Dinkova

Osmond Auditorium, Saturday 11th July, 11:30-12:00

Tools for Navigating Altered States and the Ayahuasca Experience.

Most Westerners are introduced to ayahuasca in a manner that resembles being thrown in the deep end of the pool with the hope that they will learn to swim. While some people do in fact “learn to swim” the rivers and oceans of ayahuasca by this method, the ugly truth (which most “retreat” organizers will not tell you) is that many westerners do NOT learn to swim this way, and many even “sink”: by having traumatic experiences, which leave them hesitant to drink again. This talk provides tools for navigating the different inner landscapes of journey space in a safe way.

Rick Doblin

Hofmann Hall, Saturday 11th July, 17:00-17:30

The Latest Developments in MAPS' Research.

A discussion of the latest developments in MAPS' effort to conduct research will focus on the aim to develop MDMA-assisted psychotherapy into EMA and FDA approved prescription treatment. Also covered in this talk: MAPS' marijuana study for chronic, treatment resistant PTSD, an observational study involving US Veterans with PTSD receiving Ayahuasca in Peru, and our Psychedelic Harm Reduction work. The big picture is the overall importance of psychedelic research and cultural evolution.

Heiner Dorfler

Osmond Auditorium, Saturday 11th July, 10:30-11:00

The Traditional Medicine of the Amazon Jungle: The Way into Western Society and the Return to the Origin.

This presentation highlights the ayahuasca practice in a medical and psychotherapeutic setting in Bogotá, the capital of Colombia. Five case studies exemplify the intercultural symbiosis of knowledge and practice which is taking place with the collaboration of physicians and indigenous healers. It is based on ethnographic fieldwork, and includes qualitative, semistructured interviews and participant observation. Five health professionals (three general practitioners, one psychiatrist and one psychologist) who integrate ayahuasca into their treatment concepts were interviewed. Ayahuasca can facilitate reflective processes of selfawareness and acceptance which can lead to an improved coping and healing of diseases.

Jim Fadiman (Skypedia)

Sabina Stage, Saturday 11th July, 18:00-18:30

Microdosing: Early Findings, Remarkable Results.

Microdosing appears to be the next research frontier. At the other end of the spectrum from transcendent experience, microdosing may be the safest way to benefit from psychedelics. Remarkably, these ultralow doses seem to affect a wide range of emotional and physical states, increasing compassion, creativity, physical balance, work productivity while alleviating mood disorders, depression, and general anxiety. In some case, microdoses have turned around therapyresistant PTSD, smoking, OCD, and addiction to antidepressants and cognitive enhancers. Along with preliminary yet consistent results, I will present how those with some general psychedelic experience can become a research participant or a field study coordinator.

Neiloufar Family

Shulgjin Sessions, Saturday 11th July, 10:00-10:30

Effects of LSD on Lexical Retrieval During Picture Naming.

The present study investigates semantic effects of LSD on picture naming in healthy participants. Previous studies suggest that psilocybin increases indirect semantic priming relative to placebo, suggesting an increase in semantic network activation in the drug condition. In the current study, LSD did not appear to affect lexical competition or semantic network activation. However, a significant increase in substitution errors involving intruders from the same category suggest that LSD may impair selfmonitoring for closely related items. We discuss how these results relate to current theories of lexical retrieval in language production, and how they fit within the current literature on psychedelics and cognition.

PRESENTER ABSTRACTS

Gemma Farrell

Osmond Auditorium, Sunday 12th July, 10:00-10:30

Arcadian Electricrky: 'Psychedelicness' in England's Psytrance Culture and Sonic Aesthetic.

Psychedelic trance is a subgenre within electronic dance music with flourishing scenes worldwide, which for many participants constitutes a lifestyle and an integral part of their identity. English psychedelia has tended to draw inspiration from the past, expressing nostalgia for a preindustrial, pastoral golden age. On the other hand, English literature is awash with science fiction and the notion of technology assisted social progress. Psytrance encompasses both these perspectives, at once embracing ancient wisdom and neotribal sensibilities whilst making reference to space travel, cyborgs and the like, and adopting ever more complex music production technologies.

Amanda Feilding

Hofmann Hall, Sunday 12th July, 10:30-11:00

Research at the Boundaries of Prohibition: Moving Forwards.

Amanda will talk about her struggles to open the doors to researching psychedelic compounds and also to bring about more sensible and health oriented drug policies. Over the years she has initiated and collaborated with scientists and institutions around the world, investigating the compounds that alter consciousness, and their potential effects: how they can not only help treat many of humanity's most problematic conditions, but also enhance health, happiness, and creativity. Amanda will also talk about the Beckley / Imperial Psychedelic Research Programme, which is currently undertaking the first brain imaging studies of how LSD has its profound effects on consciousness.

Andrew Feldmar

Sabina Stage, Sunday 12th July, 16:00-16:30

Psychedelic Therapy: Notes from the underground.

Cases will be presented where spectacular results were achieved with otherwise hopeless patients: (1) a patient who attempted suicide three times prior to entering therapy, was hospitalized, given ECT, and major antipsychotic medication; (2) a woman who was diagnosed with Multiple Personality Disorder, after reintegrating her dissociated fragments; and (3) a man who suffered from complex PTSD, highly functioning but unable to sleep or relax. The practice of psychedelic psychotherapy will be described and depicted, from 1960s to the present, including differences between Grof's and Laing's approach.

Friederike Meckel-Fischer

Sabina Stage, Saturday 11th July, 15:00-15:30

Dealing with Powerful, Difficult, Emotionally Intense Experiences in the Context of Psycholytic Therapy.

In this cartoon-assisted presentation you will learn more about bad trips and the stuff they are made of. It will be outlined how psycho-lytic therapy works, what its preconditions, purpose and goals are. Finally, you may understand why difficult life events are welcome to emerge in psycholytic therapy and how working through them helps pave the way towards the authentic personality

Robert Forte

Hofmann Hall, Saturday 11th, 10:00-10:30

Psychedelic Drugs: Sacred and Profane.

Psychedelics are being repopularised in modern society. After showing promise in a variety of fields, the public was thought to have begun to use them in an irresponsible way, so they became forbidden. Now, these drugs are reemerging for research and lauded by the media. Huxley praised the visionary properties of sacred drugs in "The Doors of Perception" 15 years after he warned us they could be used to thwart social progress. Are we becoming visionaries or are we being distracted from our social and political responsibilities like the denizens of brave New World?

Elana Fountoglou & Tamara Freimoser

Hofmann Hall, Friday 10th, 12:00-12:30

Psychedelic Mind Online – Phenomenology and Effects of Transpersonal Experiences.

An international online survey planned in Austria focused on transpersonal experiences with psychedelics. The questionnaire asked about the recalled impact of psychedelic experiences on the perception of everyday life, the personal self, the social environment, the perception of nature and art (n=116). A content analysis of qualitative data and an SPSS analysis of quantitative data showed that nearly any kind of transpersonal experience can be induced by the majority of psychedelic substances.

Ede Frecska

Osmond Auditorium, Saturday 11th July, 17:30-18:00

The Possible Role of DMT in Oxidative Stress and at the End of Life.

The majority of research on DMT has targeted its psychotropic properties with less focus on its effects beyond the nervous system. The recent discovery that DMT is an endogenous ligand of the sigma1 receptor may shed light on yet undiscovered physiological mechanisms of DMT activity and reveal some of its putative biological functions. The presentation will overview the literature of the effects of sigma1receptor ligands on cellular bioenergetics, the role of serotonin, and serotonergic analogues in immuno-regulation. We conclude that the function of DMT may extend central nervous activity and involve a more universal role in cellular protective mechanisms.

PRESENTER ABSTRACTS

Andrew Gallimore

Sabina Stage, Friday 10th July, 15:30-16:00

What is it like to be a machine elf?

N,N-DMT has a remarkable ability to fire the user into bizarre alien worlds that are often infested with a variety of strange entities, the most famous of which being the lively and mischievous 'machine elves'. Using a combination of systems neuroscience, Jungian thought, ancient Vedic scripture, and wild speculation, I will show how it might be possible to approach the DMT entities from 'the inside', and answer the question as to whether machine elves (and other DMT entities) possess subjective consciousness. To borrow Nagel's phrase, is there something it's like to be a machine elf? And, if so, what is it like?

Sam Gandy

Osmond Auditorium, Saturday 11th July, 14:30-15:00

Who's Tripping Whom?

A talk on how human modification of global ecology has increased habitat and the likelihood of human encounters with psychedelically plants and fungi. At the same time, these agents have been credited with increasing people's aesthetic appreciation for nature, while raising ecological awareness and concern. DMT is a component of a number of these plants, and its ability to transcend species barriers will be discussed.

Luke Goaman-Dodson

Osmond Auditorium, Sunday 12th July, 10:30-11:00

The Real Secret of Magic: Burroughs, McKenna, and the Syntactical Nature of Reality.

This paper will explore the connections between William Burroughs and Terence McKenna, two of America's most notable literary psychonauts. As well as being among the first recorded Westerners to explore ayahuasca, both McKenna and Burroughs were proponents of what McKenna has termed 'the syntactical nature of reality': the notion that the world is made of words and symbols, and that manipulation of these symbols will lead to observable changes in reality. This led Burroughs and his collaborator Brion Gysin to experiment with the cutup technique, pioneered as a means of writing avantgarde poetry by Tristan Tzara, reapplied as a method of divination and sympathetic magic.

Neal Goldsmith (Skypedelia)

Hofmann Hall, Sunday 12th July, 18:00-18:30

Psychedelics and Death: A Brief Introduction.

The concept and at times the actuality of death always attends the psychedelic experience. This talk begins with the tribal perspective on death attained through the ingestion of visionary plants, zombieism, and the extraordinary variety of ways to become aware of one's consciousness. We then turn to the Western perspective on death as seen through the lens of Rank's birth trauma, Grof's death and rebirth experience, and the central importance of the ego death experience. We close with a discussion of our fear of annihilation and resistance to our inner truest selves, along with our desire for illumination, clarity, and developmental transformation found through ego death. It is this deeper, larger perspective on death – and life that is provided by psychedelics and its great benefit to society.

Geoff Greentree

Shulgin Sessions, Sunday 12th July, 10:30-11:00

The Sweat Lodge.

An overview of the history of The Sweat Lodge and its recent popularity in "the West". How it is constructed and an overview of the symbolism. How it works scientifically. How women and men can sweat separately and how that can be so powerful. Some misconceptions would be examined and the 2010 Sedona disaster exposed and clarified. I will discuss my aim to promote nondrug ASCs whilst honouring those that combine Lodges with, say ayahuasca or San Pedro; and how I have held Lodges as part of pre or post cleansing during those ceremonies. Also, a look at some of the similarities in entoptics in the Lodge and in other ASCs.

Roland Griffiths

Sabina Stage, Sunday 12th July, 15:00-15:30

The Johns Hopkins Psilocybin Research Project: Mystical Experiences, Challenging Experiences, and Risks.

Over the past 15 years, our research team has conducted a series of prospective studies in healthy volunteers and patient populations as well as a series of anonymous internet surveys characterizing mystical-type and challenging psilocybin experiences indicating enduring positive and, less frequently, enduring negative effects. This presentation will summarize results from published and ongoing studies. The challenging experience survey study indicated that 11% of the 1993 respondents reported putting themselves or others at risk of physical harm after taking psilocybin, with 3% getting help at a hospital or emergency department. Of those whose experience was ≥ 12 months ago ($N=1339$), 10% reported enduring adverse psychological symptoms lasting ≥ 1 yr, with 8% reporting seeking professional help for symptom treatment.

PRESENTER ABSTRACTS

Stuart Griggs

Hofmann Hall, Sunday 12th July, 15:30-16:00

Visionary Art, Context and Perspectives.

The presentation will explore the position of Visionary Art within a wider cultural context. We will explore through imagery the psychedelic perspectives within visionary art in conjunction with the perspectives of the art world, popular culture, and globalism. What are the circumstances / reasons for the emergence of visionary art as a movement in contemporary culture and what is the significance of the messages that are conveyed through this particular creative movement?

Lester Grinspoon (Skypedelia)

Hofmann Hall, Friday 10th July, 18:00-18:30

Whither Cannabinopathic Medicine.

This paper briefly reviews the history of medical marijuana. About 100 papers were published from 1852 to the turn-of-the-century on its usefulness as a medicine in both children and adults. With the advent of the first competitive synthesized pharmaceuticals, which were easier to prescribe as pills of known potency, doctors began to lose interest in Cannabis. By the 1960s, when cannabis began to reappear as a medicine, physicians had all but forgotten about this remarkable medicine. Presently, physicians are confronted what may best be referred to as cannabinopathic medicine and its meteoric rise as a remarkably safe and useful palliative medicine, and the question of how it will be integrated into allopathic medicine.

Alberto Groisman

Osmond Auditorium, Friday 10th July, 10:00-10:30

The Permission of Vó Nadir: daime religions and the consistency of relationships.

In 2011, Alberto witnessed the incorporation of Vó Nadir, a preta velha, or an entity from the spiritual plane. Vó Nadir came from the spiritual plane to assist young people from the community of Barquinha, to deal with their problems. Barquinha is located in Rio Branco, Acre, Brazil, and it is one of the churches of the lineage of Daniel Pereira de Mattos. Rather than reflect on cosmoideological aspects of the groups that make use of ayahuasca, I try in this paper to address the instrumentalization of the use of the sacramental daime to promote a relational wellbeing..

Lumir Hanus

Hofmann Hall, Friday 10th July, 17:00-17:30

The Discovery of the Endocannabinoid System and its Importance for Treatment with Cannabis.

The lecture deals with the history of the Cannabis sativa L. plant, isolation and identification of the most important compounds (cannabidiolic acid, tetrahydrocannabinol, and cannabidiol). Details regarding the pioneering identification of cannabinoid receptors in the brain, isolation of the first endogenous ligand for these receptors, anandamide, as well as the pharmacology and potential therapeutic uses of endocannabinoids are presented. Cannabis has been used for medicinal purposes for thousands of years. Unfortunately, this plant later became illegal. Discovery of cannabinoid receptors and endocannabinoids caused the rebirth of cannabis as medicine.

John Harrison

Shulgin Sessions, Friday 10th July, 17:30-18:00

Realizing Transformation: Integration and Continuing Care in the Psychedelic Treatment of Addiction.

This talk will explore what John has learned after treating and following up with hundreds of patient/journeymen over the past ten years; that conscious and sustained attention to Continuing Care or Integration is the SINGLE best predictor for a successful or positive outcome for those using the psychedelic plant medicine Ibogaine in the treatment of addiction. I will give a brief history of Ibogaine and touch on Ibogaine's current status as a rising star in the addiction treatment quiver of useful and effective tools. What are the essential elements of a successful Continuing Care program? How can we best serve those who seek our medicine, support, and counsel?

Kat Harrison

Sabina Stage, Sunday 12th July, 12:00-12:30

The Perception of Feminine Personae in Psychoactive Species.

Animism attributes a soul or persona to plants and other nonhuman beings, elements, or objects. In traditional cultures, various species have a collectively acknowledged female nature. Certain psychoactive or psychedelic species may evoke qualities that are experienced by the individual as gendered. In contemporary psychedelic culture, some people recognize the presence and effect of feminine beings or energy, which they perceive as dwelling in the species or as awakened by human interaction with the species. What might be happening here? What are the gifts and questions that arise from such experiences?

PRESENTER ABSTRACTS

Ido Hartogsohn

Shulgin Sessions, Saturday 11th July, 15:00-15:30

A Psychedelic Technology: How Set and Setting Shaped the American Psychedelic Experience 1950-1970.

Hallucinogenic drug research around 1960 showed a perplexing diversity of interpretations of the nature of the psychedelic experience. While one group of scientists regarded hallucinogenic psychoactives such as LSD to be psychotomimetics, another group of scientists regarded them as psychotherapeutic tools ushering in a 'new sanity'. Other scientists regarded psychedelics as capable of cognitively, creatively, or spiritually enhancing the mind. Curiously, each group produced experimental results which seemed to support its claims. This talk will closely and meticulously test the set and setting explanation to this conundrum.

Thomas Hatsis

Shulgin Sessions, Saturday 11th July, 17:30-18:00

Demonizing the Entheogenic Experience in Early Modern Europe.

This talk details how the earliest records pertaining to magical drugs used for spiritual flight (early 15th century) were not only seen as innocuous by clergymen, but laughable. However, by the late 15th century, as theologians reworked the idea of what a witch actually practiced (i.e., evil magic), suddenly these magical drug ointment were recorded by clergymen as ways to "fly" to Satan. The stereotypical perception of drugs being "evil" and "reefer madness" type propaganda, began at this time through a complete misunderstanding of the entheogenic experience and it's subsequent demonization.

Michael Heinrich

Hofmann Hall, Friday 10th July, 15:30-16:00

Cannabis: Why do we need to know more about its chemical composition?

Preparations derived from Cannabis have been the source of medicines since the earliest written records on pharmacobotany, primarily treating pain. The attention both in scientific circles and of the general public has generally been on Cannabis rich in the main psychoactive constituent THC (tetrahydrocannabinol). Equally, Cannabis low in the main psychoactive principle THC (hemp) has not been at the centre of many Research and Development (R&D) activities. This presentation will showcase that we generally ignore the wider chemical complexity of 'cannabis' and that we need a much more detailed understanding of what is being used as medicinal or psychoactive cannabis and their effects on us. We are still far away from understanding Cannabis' multifunctionality.

Scott J. Hill

Shulgin Sessions, Saturday 11th July, 12:30-13:00

Archetypes and the Collective Unconscious: Jungian Insights into Psychedelic Experience.

Carl G. Jung pioneered the transformative potential of the deep unconscious. Psychedelic substances provide direct and powerful access to this inner world. How, then, might Jungian psychology help us to better understand the nature of psychedelic experiences? And how might psychedelics assist the movement toward psychological transformation advanced by Jung? This talk emphasizes especially challenging psychedelic experiences which, while potentially traumatic, offer the ground for profound psychological healing and spiritual transformation. This talk will focus on how Jung's concepts of archetypes and the collective unconscious help us explain these challenging psychedelic experiences and their transformative potential.

Jonathan Hobbs

Shulgin Sessions, Friday 10th June, 11:30-12:00

Legal uncertainty and troubling trends: Ayahuasca and other plant psychedelics in and out of the English courts.

Through a close examination of a variety of sources including reported and unreported proceedings in the courts, I explain why the legality of ayahuasca is impenetrable and impossible to determine with any precision. I identify and discuss pertinent points in the current debate to show that, despite binding judgments from the appellate courts, the pervading legal uncertainty is no closer to a meaningful resolution. The presentation aims to highlight why emerging strategic trends in plant psychedelic prosecutions are so troubling and to give a realistic summary of the challenges to both ayahuasca users and jurisprudence scholars.

Martina Hoffmann

Hofmann Hall, Sunday 12th July, 17:30-18:00

Art, Creativity and Consciousness.

This presentation will take you on a brief, visually potent journey into the world of Martina Hoffmann's inner landscapes. You will experience one artist's journey through her own artistic and consciousness evolution as reflected in her visionary art. Has making art evolved her consciousness or has her evolving consciousness been evolving her art? The question is akin to the question of 'which one came first, the chicken or the egg?'

PRESENTER ABSTRACTS

Mat Hoskins

Shulgin Sessions, Friday 10th July, 15:00-15:30

An fMRI Investigation into the Acute Effects of MDMA Administration in Chronic, Treatment-Resistant PTSD.

MDMA is the most promising new treatment for post traumatic stress disorder (PTSD) to emerge in recent years. This talk will discuss the historical use of MDMA in therapy, as well as a discussion of the challenges faced in modern research. We will discuss the neurobiology of PTSD, including functional brain changes in the fear circuits of the brain, and review the neuroimaging findings of MDMA use in healthy volunteers. We will review the current evidence from randomised controlled trials of MDMA-assisted psychological therapy in patients with chronic, treatment-resistant PTSD and explore the neurobiology of MDMA, including its unique psychopharmacological profile and how it is ideally suited to assisting trauma therapy.

Elizabeth Hughes

Sabina Stage, Friday 10th July, 09:30-10:00

Narratives of Psychedelic Experiences: The Quest for 'Truth', 'Self', Meaning & Transformation.

This research attempts to consider how anomalous self-experiences resulting from the use of indigenous plant medicine might speak to the human quest for meaning and transformation, opening up a space for reflecting on what is meant by the notion of 'self' and how we might account for 'truth'. Drawing on an in-depth narrative analysis, themes of Death/ Endings, 'Awakenings' and Integration surfaced in the research. Problematising ideas of the 'self' and 'truth' as objects which can be fixed in time and space, the story speaks to the impossibility of giving a coherent account of 'reality', suggesting instead a perpetual movement beyond the boundaries of 'self' into something unknown and unknowable.

Jack Hunter

Sabina Stage, Friday 10th July, 15:00-15:30

On the Nature of the Psilocybe Folk: Psychedelic Entity Encounters and the Problem of Spirits.

Taking inspiration from the author's own experience of seemingly conscious 'entities' in a psychedelic state, this paper seeks to explore different theoretical perspectives on the nature of spiritual beings from within the discipline of anthropology. The paper takes a broadly historical perspective, outlining the development of key approaches from the earliest pioneers and their attempts at grappling with nonphysical beings to some of the more recent explanatory models. It is argued that reductive explanatory models fail to account for the complexity of spiritual beings as social agents, with tangible influence on the lives of those who encounter them.

Craig Inglis

Osmond Auditorium, Friday 10th July, 09:30 -10:00

In the Province of the Mind: The life and times of Dr John C. Lilly.

Dr John C. Lilly was one of the most preeminent, original, visionary scientists of the twentieth century. A pioneering polymath of extraordinary scope who delved deeply into the fields of neurophysiology, neuroanatomy, biophysics, computer theory, psychology, metaphysics and interspecies communication. All were explored with a rigorous scientific intellect in a lifelong quest to understand "reality". Always pushing and expanding both the inner and outer limits of human experience, with and without psychedelics, his body of work has led to a greater, more encompassing understanding of ourselves. Please join us in a dance through Brains, Cetaceans, Isolation Tanks, Psychedelic Tools and Belief Systems.

Kilindi Iyi

Osmond Auditorium, Friday 10th July, 12:30 -13:00

Psilocybin: A tool of exploration?

This talk will explore is psilocybin a medicine or an exploratory tool? Psilocybin at high dosage is the supreme ally to submerge the human consciousness and tweak the genes through access of dormant DNA. This talk will speak to the high dose experience of psilocybin and the effects on the mind body system in the hyperdimensional realms. With the availability and access to powerful psychedelic compounds experiments can be done in the first person with very little problems in the comfort of ones own home. Psilocybin in mushroom form is readily available and inexpensive. The question is although psilocybin has medicinal usages is this it's primary purpose? We say its primary purpose is exploration for everyone as a right.

Nick Jankel-Elliot

Osmond Auditorium, Sunday 12th July, 12:30-13:00

Psychedelics & Resolving Climate Change & Poverty Fast.

The clock is counting down on our species. If we don't cut our greenhouse gas emissions fast, we are looking at a minimum of a 2 degrees shift in temperature which will devastate our societies. Luckily, in the psychedelics, nature may have provided us with a unique solution that can generate the mass empathy needed for change. The Huaroni tribe in Ecuador call taking ayahuasca "getting drunk on nature". Entheogens might be the fastest way we have to get to the tipping point and change our consumer lifestyles before we reach irreversible planetary damage.

PRESENTER ABSTRACTS

Matt Johnson

Hoffman Hall, Saturday 11th July, 15:30-16:00

Kicking (Cigarette) Butt: Psychedelic Treatment of Tobacco and Other Addictions.

This presentation will describe an openlabel pilot study using psilocybin with cognitive behavioral therapy to treat tobacco addiction. Results showed 80% of participants were abstinent at 6-month follow up, a success rate substantially higher than conventional treatments. The presentation will also show data from an online survey which characterized the stories of >1100 people who claimed to have quit or reduced smoking after using a classic psychedelic. Combined with evidence suggesting classic psychedelics are effective in treating alcoholism, these results suggest potential general applicability of psychedelic therapy across addictions, and prompt a scientific reevaluation of the nature of addiction.

Guy Jones

Shulgin Sessions, Friday 10th July, 10:00-10:30

How to Test Your Own Drugs

The vast majority of recreational drugs consumed in the UK are produced in unregulated facilities and vulnerable to misrepresentation or contamination in a variety of possibly dangerous ways. Unfortunately, it is not common knowledge that testing of recreational drugs is both inexpensive and easy. The talk covers some background about the types of tests that are available and the information they give, the reasons for testing and the process of performing the tests. The talk will also discuss the provision of reagent testing at festivals and how Kosmicare UK will be implementing this as a service and the challenges they face in doing so.

Henrik Jungaberle & Andrea Zeuch

Sabina Stage, Friday 10th July, 10:00-10:30

Integrative Use of Psychedelics new perspectives for research, public discourse and personal development.

In this talk we present an evidencebased model for "integrative use" of psychedelics that we developed in the course of a 10yearlongitudinal study (RISA). The model of "integrative use" is based on qualitative and quantitative data. We discuss the nature and relevance of "integration" for selfdevelopment and its usefulness for public discourse. Participants of the study were involved in the use of psychedelics, empathogens and other substances. They reported using substances with or without psychedelic intentions, within or outside of structured settings like therapy or religious ceremony.

Mendel Kaelen

Shulgin Sessions, Saturday 11th July, 09:30-10:00

Neuroimaging Study on the Effects of LSD on the Subjective Experience of Music.

Music and psychedelic drugs are potent tools to modulate affective states, and they have been used for these purposes by humans throughout history. In western psychiatry in the 1950s and 1960s, emotionally evocative music was a key component in pioneering clinical trials with the classic psychedelic drug LSD. It was believed that music acts synergistically with LSD to support the release of repressed emotions, to promote therapeutic insight, and to enhance mental imagery. This presentation will present findings from a recent study that used functional magnetic resonance imaging (fMRI) and magnetocencephalography (MEG) to measure acute effects of music on brain activity and connectivity after intravenous LSD in healthy volunteers.

Roger Keen

Osmond Auditorium, Sunday 12th July, 09:30-10:00

Beat Writers & The Psychedelic Movement.

In their writings and lifestyle experiments, the Beat writers Kerouac, Burroughs and Ginsberg were very much the precursors of the psychedelic movement – in particular with regard to their employment of drugs for recreational and psychonautic purposes. They were pioneering users of ayahuasca, mescaline, psilocybin and LSD; and when Timothy Leary began his Harvard work he naturally tried to induct the three as elder statesmen figures. The results were somewhat volatile and unexpected, with one resounding success, another a mix of good and bad, and another a resounding failure. Nevertheless the Beats remain highly influential figures and today's psychedelic culture would not be the same without them.

Ian Kenway

Osmond Auditorium, Sunday 12th July, 17:30-18:00

Entheogens and the Emerging Internet of Everything.

According to CISCO, the Internet of Everything is about "bringing together people, process, data, and things to make networked connections more relevant and valuable than ever before – turning information into actions that create new capabilities, richer experiences". To understand connectivity primarily through the paradigm of interactive control however is problematic in its naive instrumentalism and implicit dualism. Psychedelic research has the capacity to generate useful critiques of utopian accounts of cyberspatial connectivity while simultaneously providing a distinct entrée into the preoccupations of philosophers as diverse as Wittgenstein, Heidegger, Polanyi and MerleauPonty where the ambiguity of bodily existence is critically acknowledged.

PRESENTER ABSTRACTS

Dave King

Osmond Auditorium, Sunday 12th July, 14:30-15:00

A Model of Psychedelic Heresy.

The model of epigenesis describes an enhancement of a person's ability to exercise conscious choice in a physiological or psychological process. This may happen when ordinarily nonconscious material is brought into consciousness. It is a natural and everyday occurrence and can be achieved through biofeedback, meditation, breathing exercise, physical training, and so forth, but under the influence of psychedelics, epigenesis may come instantly, and unexpectedly. The word epigenesis refers to the enablement of choice, and comes from the Greek roots epiloyi (meaning 'choice, decision, action') and genesthai ('to bring into being').

Rita Kocarova

Shulgin Sessions, Friday 10th July, 16:00-16:30

Psychotherapeutic Implications of Ayahuasca Use in Addiction Treatment.

This talk will present the results of qualitative research conducted in Takiwasi, where the therapeutic model is unique in its field, characterized by the combination of psychotherapy with the traditional medicine of the Amazon, in which ayahuasca holds a pivotal position. By acting on several - levels biological, psychological, social and spiritual - it affects various dimensions of addiction. My study focused on the possibilities of ritual ayahuasca use in psychotherapeutic context in the treatment of addictions; identifying effective factors of ayahuasca and its interactions with concurrent psychotherapy. The research sample consisted of ten patients staying long-term in Takiwasi and regularly participating in ayahuasca sessions.

Teri Krebs

Hofmann Hall, Saturday 12th July, 14:30-15:00

Your Human Right to Use Psychedelics

Psychedelic use is a spiritual, personal development, and cultural practice. As such, psychedelic use is protected under international human rights treaties unless there is a compelling evidence of a serious problem. Bans on psychedelics were based on fears and biases rather than a reasoned examination of the evidence. Legal protection for psychedelic users fits well within the growing international campaign (supported by former UN secretary general Kofi Annan, human rights organizations, and UN agencies) to place respect for evidence, human rights, and fundamental freedoms at the center of drug policy and to allow for legal regulation of distribution and personal use of psychoactive substances.

Danny Kushlick

Sabina Stage, Saturday 11th July, 10:00-10:30

Beneficiaries and Benefactors: Winners and Losers in the Post-prohibition World.

There will of course be great gains from ending the global prohibition. Replacing war with peace creates a hugely changed cultural context. However, it cannot be denied that some will lose out. Not just those benefiting financially from the global drugs war, but also for example, those who identify drug users as a threat to society. Danny will suggest that civil society has a very different agenda from the ruling elite.

Cara Lavan

Sabina Stage, Saturday 11th July, 10:30-11:00

The Life and Death of Jake Coe: When the Personal Becomes Political and Vice-versa.

Jake Coe struggled with addiction for most of his life and tried numerous ways of dealing with it including the 12 steps, a variety of therapies and plant medicines. In 2014, he died of a drug overdose. Using Jake's voice and story, his partner Cara will look at the obstacles to recovery that prohibition put in their lives, how things might have been different in a post prohibition world and share news of a forthcoming campaign which aims to bring an end to the laws that may well have cost Jake his life.

Paul Likhnaitzky

Shulgin Sessions, Saturday 11th July, 11:30-12:00

Violating Expectations in Depression & the Antidepressant Mechanisms of Altered States of Consciousness.

A range of altered states of consciousness (ASCs) including those generated through mindfulness and psychedelics have antidepressant effects, although therapeutic mechanisms are poorly understood. For the first time, we found a link between depression and deficits in processing unexpected higherorder information in a pilot (n=110) and followup study (n=165). This finding was highly significant. This may represent a mechanism for the persistence of distorted beliefs in depression. These findings will be discussed in the context of the antidepressant mechanisms of ASCs.

PRESENTER ABSTRACTS

Mark Waking Light

Shulgin Sessions, Sunday 12th July, 15:30-16:00

Sacred Medicine for a Secular Culture: How to Make Spiritual Experience Accessible.

Imagine a world where ordinary people can openly and legally come together to take a powerful psychedelic with spiritual intent and partake in a life changing experience with the musicians they love. For the past three years, as the founder of the Jam of Lifetime, I worked with a group in the Netherlands that made this vision a reality. This session explores how psychedelics and art can help make spiritual experience accessible to people from all walks of life. Just as meditation was adopted as mindfulness, how can psychedelic ceremonies make the transition required to effectively engage with contemporary culture?

Tom Lloyd

Sabina Stage, Saturday 11th July, 12:00-12:30

Prohibition: A Police Perspective

The so-called "War on Drugs" is in fact a war on people; usually the poor, vulnerable and disadvantaged. The regime of drug prohibition puts police officers, at great financial and social cost and often against their better judgement, in direct conflict with the citizens that police officers are supposed to serve and protect. I will explore how the end of prohibition will reshape the role of police and their relationship with the public and deliver significant benefits.

Pete Loveday

Hofmann Hall, Sunday 12th July, 14:30-15:00

Art as a Mind Altering Dialogue.

'Art' is an essentially contested concept. Definitions and theories of art are always polemical and, as theories, inadequate. Meanwhile the artist makes objects and performances and in the making has experiences that may or may not feed back into the finished art object. The art object is intended to be experienced by the viewer, however minimally. The psychedelic aspect of art is centred on changes in perception or viewpoint. Nothing to do with normative or competitive definitions. Beyond culturally approved norms the dialogue begins.

Anna Luke

Sabina Stage, Sunday 12th July, 11:30-12:00

Towards a Radical Uncertainty.

This paper explores how the psychedelic experience, particularly the use of plant spirit medicines, might help us embrace the uncertain, and begin to see not knowing as a primary path to knowledge. Examining the Greek notion of Aporia – a state of fertile doubt – I will look at how darkness can be a site of fear, mystery and generation. Looking at the work of writers such as Rebecca Solnit, Plato, Virginia Woolf and John Keats, I will suggest that a feminist poetics might emerge from this darkness, and offer ways in which this poetics may be of use in challenging calcifying and dangerous norms in science and culture.

David Luke

Sabina Stage, Friday 10th July, 14:30-15:00

How does one prove oneself? Exploring the Ontology of Discarnate Entities in the DMT Realm

Entities encountered during DMT experiences tend to vary in detail, but often belong to one of a very few similar types, with similar behavioural characteristics. This talk will discuss the phenomenology and ontology of these entities by drawing upon research from parapsychology, ethnobotany, and psychopharmacology – the fruits of science – and mixing it with the "foamy custard" of Folklore, Anthropology, Mythology, Cultural Studies, and related disciplines. Hopefully, however, it won't prove to be a trifle too interdisciplinary. It will also present a preliminary report of plans to analyse Strassman's original DMT participant experiences from a phenomenological perspective.

Jennifer Lyke & Julia Kuti

Hofmann Hall, Friday 10th July, 10:00-10:30

Case Report of a High Frequency, Non Clinical Hallucinogen User.

This presentation will discuss a unique nonclinical case which is notable due to the frequency and duration of psilocybin use. The participant in this case study was a 24 yearold man who reported that he used a large amount of psilocybin almost daily for an approximately ten months. Interviews revealed aspects of the participant's perspective that match descriptions of mystical experiences, as well as aspects that may be construed as grandiose or delusional. The presentation will address various interpretations of the participant's experience as well as the need for further investigation of high frequency hallucinogen use in nonclinical populations.

PRESENTER ABSTRACTS

Tomislav Majic

Hofmann Hall, Friday 10th July, 12:30-13:00

Concepts of Psychedelic Drugs as Therapeutic Agents.

After a long period of legal restrictions, the therapeutic potential of psychedelic substances is currently being reconsidered by clinical research. However, concepts of how psychedelic substances unfold their therapeutic effects have somewhat changed when compared to the first wave of psychedelic research from the 1960s and 70s. This speech will try to give a brief overview on previous and current hypotheses on therapeutic mechanisms of action of psychedelic drugs. Different strategies of involving psychedelics in a therapeutic process will be discussed, with a special reference to concepts of altered perception of ego and self reference, psychodynamic effects and so-called peak experiences.

Oliver Martin

Shulgin Sessions, Sunday 12th July, 16:00-16:30

Psilohuasca, the Return of the Magic Mushroom.

The presentation will give details on how the idea for psilohuasca.com was born, the chemistry and therapeutic potential of 5-MeO-DMT

and psilocybin, guiding a group without being a shaman, differences and similarities between psilohuasca and ayahuasca, ideas about spirituality, addiction, depression, seeking liberation, awakening and healing, integration of psychedelic experiences and applying gained insights of the ceremony weekends to daily life.

Jeromino Mazarazza

Osmond Auditorium, Saturday 11th July, 12:30-13:00

Ayahuasca: Tourism vs. Tradition.

This presentation concerns the nature, effect and consequence, of the ongoing encounter between western psychonauts and traditional practitioners of ayahuasca. It will reflect upon some of the misconceptions and projections that operate at both ends of the western/indigenous spectrum. We discuss exemplary anecdotes of western and indigenous ingenuity (and folly), jaunty personal reflections on being white, illustrative metaphors on the idealization of the other, some underanalyzed western dreams, some often ignored indigenous realities and a hopeful glance towards the future.

Will McCutcheon

Osmond Auditorium, Friday 10th July, 15:00-15:30

Time, Order and Symmetry Breaking in the Cosmological Universe.

Following a great deal of exploration into the conscious experience of time, we have recently been given new tools in formulating a mathematical understanding of time leading to an altogether different view of this dimension that links the movement of billiard balls to the unpredictable behaviour of chaotic systems, and ultimately ourselves to the singularity. From the Newtonian view of time, which underpins the majority of our day-to-day experience, to the contradictory thermodynamic description unified description of both regimes.

Rupert McShane

Hofmann Hall, Saturday 11th July, 16:00-16:30

Ketamine for Treatment-Resistant Depression: The first 500 infusions.

Low dose intravenous ketamine has rapid antidepressant action in up to 70% of people with otherwise treatment resistant depression. We have treated over 50 patients with ketamine during sessions while other patients are receiving ECT. This ensures that a team experienced in helping patients with resistant depression and a consultant anaesthetist are present. I will discuss the implications of the results, and of future development programmes, for advancing clinical research into the use of psychedelics.

Joe Mellen

Shulgin Sessions, Sunday 12th July, 12:00-12:30

The Psychedelic Science of Bart Huges

An introduction to the work of Bart Huges, one of the true pioneers of the psychedelic movement in the sixties. I met him in 1965. He gave me my first acid trip. I became his first disciple, helping him in the exposition of his discoveries in English. He trepanned himself in 1965, shortly before I met him. Also, with the help of a friend he made the first LSD made outside the pharmaceutical industry. I'll explain how he came to realize that it was an increase in the volume of blood in the brain capillaries that was responsible for expanded consciousness and then described how the Ego mechanism controls and coordinates the brain functions, affecting the concentration of blood in the brain centres in action.

Ralph Metzner (Skypedelia)

Hofmann Hall, Saturday 11th July, 18:00-18:30

TBA

PRESENTER ABSTRACTS

Daniel Mirante

Hofmann Hall, Sunday 12th July, 17:00-17:30

Gnosis and Art.

Daniel Mirante will present on the creative process pertaining to painting, and the application of traditional craft techniques to visionary or transpersonal symbols. He will share of his own art and his contemporaries, exploring the significance of enshrining certain forms of seeing into visual language so they can be shared collectively.

Michael Montagne

Shulgin Sessions, Saturday 11th July, 17:00-17:30

Evaluation of Google's Ngram Analytic Tool Applied to World Literature on Psychedelic Drugs.

Application of Google's Ngram Analytic Viewer to the world literature on psychedelic drugs was evaluated for its utility as a research tool. Searches on general terms (psychedelic, hallucinogen, entheogen) produced somewhat different results especially by language. Employing search words that are specific drug names produced even more precise results. Google's Ngram Tool appears to be a functional tool for performing searches for the usage popularity of words and phrases related to psychedelic drugs over the past century. Researchers should consider including it in studies on the historical epidemiology of use and misuse, mass media representations of psychedelic drugs, and adoption and regulation of psychedelic drug technologies.

Celia Morgan

Sabina Stage, Saturday 11th July, 14:30-15:00

Seduction by K: Promises and Pitfalls

Ketamine is a dissociative anaesthetic that from a medical perspective is very safe: overdose from ketamine alone is very difficult as it does not cause respiratory or cardiac depression. But ketamine use is not without its problems. Some people fall into what John Lilly termed 'Seduction by K' or the 'repeated use trap'. Along with addiction, seduction by K carries some potentially high risks, most notably ketamine induced ulcerative cystitis and, in some, long term psychological effects. Other risks come from ketamine's dissociative nature in that it separates users from the external world and renders them completely unresponsive: numerous people have sadly died from accidents related to ketamine. This talk will consider these risks alongside the benefits of ketamine and harm reduction strategies for the future.

Levente Moro

Shulgin Sessions, Friday 10th July, 12:30-13:00

Assessing Serious Evil: Bioethical Issues of Drug Control.

Concerned with the health and welfare of mankind, the 1961 Single Convention on Narcotic Drugs aims to prevent and combat the "serious evil" constituted by addiction and abuse. However, besides a sole reference to the religious concept of profound immorality, this international treaty has never been further justified by secular ethics based on logic, reason, or moral intuition. This presentation discusses several bioethical considerations of drug control, such as the ethics of risk assessment and substance scheduling, the legitimacy of selfmedication and selfenhancement, the ethical basis for using the precautionary principle, and the feasibility of evidencebased drug policies.

Benjamin Mudge

Shulgin Sessions, Friday 10th July, 15:30-16:00

A Mixed Method Investigation of Ayahuasca Ceremonies as a Candidate Therapy for Bipolar Disorder and Cyclothymia.

People with Bipolar Disorder are severely impacted, often driven to suicide, yet are often creatively gifted and spiritually attuned. With such sensitive emotions, perception, and neurology, they are easily traumatized and vulnerable to PTSD too. This talk will present relatively unknown empirical research into the fundamental mechanism of mood swings, which is demonstrated to be modulations in the rate of phosphoinositide cycling within neurons. Future laboratory experiments with the psychoactive isolates found in Ayahuasca tea upon the phospho-inositide cycle in cultured neurons will indicate whether Ayahuasca has a mood-stabilizing effect similar to Lithium salts.

Marianne Murray & Holly Harman

Shulgin Sessions, Sunday 12th July, 12:30-13:00

Holotropic Breathwork: a Non-drug Methodology Supporting Preparation, Experience, and Integration for Work in Expanded States of Consciousness.

Holotropic Breathwork (HB) is a non-drug methodology, created by psychiatrist, Stanislav Grof and his wife, Christina, as a means of experiencing nonordinary states of consciousness. This presentation will offer a basic description of HB process and the underlying theory, including a brief overview of Grof's 'cartography of consciousness'. We will then discuss three different aspects of the utility of HB in relation to the field of psychedelic research and exploration.

PRESENTER ABSTRACTS

Nen

Osmond Auditorium, Saturday 11th July, 15:00-15:30

Tryptamine Plant Mythos & Usage: Old and New.

Tryptamines, which include DMT, provide a range of modes of experience and possible therapeutic roles, the potential of which are still new territory to modern science. While there has been widening interest in ayahuasca, and in DMT, there are other traditions and tryptamines which have their own depths and actions. The talk will look at tryptamine containing plants around the world, particularly Acacias, including Africa, the Middle East and Asia, their traditional spiritual significance, and evidence of ancient or hidden usage, as well modern usage and new mythos around them, and this correlates with older belief systems.

Jonathan Newman

Hofmann Hall, Friday 10th July, 15:00-15:30

Transgression and Economy During Drug Reform.

This paper uses ethnographic research on changes within the cannabis industry to explore market responses to drug reform and the sustainability of liberalising drug legislation. Success in a sector on the edge of illegality cultures a particular business approach. The continual shifting between prohibition and greater de-regulation leaves many businesses within the cannabis sector operating legally one day and illegally the next. This talk explores the effects of liberalisation in the United States and the interplay between business, medicine and recreation in the cannabis market.

David Nichols

Hofmann Hall, Sunday 12th July, 12:00-12:30

Randon Selections: From research tools to research chemicals.

Over the course of more than four decades of research on psychedelics, my lab had occasion to prepare and study many different molecular analogues of psychoactive compounds, including MDMA, LSD, and numerous phenethylamines. Our work involved understanding structure-activity relationships, meaning that we attempted to understand which features of a molecule were responsible for its psychoactive properties. We carried out extensive work with many different analogues in attempts to capture the crucial features of the molecules. This talk will give an overview of some selected examples of our work, and show why many of them later became "research chemicals."

David Nickles

Osmond Auditorium, Saturday 11th July, 16:00-16:30

Criminals and Researchers: Perspectives on the Necessity of Underground Research.

Government-sanctioned research into psychoactive plants and compounds generally focuses on their acute medicinal benefits in a disease-prevention/ treatment model. However, there is largely unexplored territory in the realms of phytochemical analysis of entheogenic preparations, safe handling and use of such preparations, the propagation of both the plants and knowledge necessary for producing such preparations, and serious engagement with the ontological implications of psychedelic experiences. Despite the dearth of sanctioned research into these areas, underground research is thriving and producing data that is relevant both inside and outside of scientific communities.

Svea Nielsen

Shulgin Sessions, Friday 10th July, 10:30-11:00

The Manual of Psychedelic Support

Introduction on the history of psychedelic help and sharing of the audience's own experiences in that field. Then I will describe the ethic of such a work, and go on with the chapters of the Manual: how to plan a new project, how to recruit a team, how to train that team. We will also see some aspects of the logistics of a Care Space. The different methods or therapies that we can apply in a psychedelic crisis, from hugging to painting or simply sitting will be presented. We will finish the presentation with some case studies. As a conclusion, the audience will be able to share how we can imagine the development of such care services in the future.

Tehseen Noorani

Sabina Stage, Friday 10th July, 12:30-13:00

The Politics of the Psychedelic Experience: Space as shared process.

A focus on exploring the depths of subjective experience using psychedelics has been associated with a return to the philosophy of Henri Bergson. This presentation problematizes the notion that the psychedelic-facilitated experience is a 'turn inwards', by drawing on a comparative ethnography charting psychedelics use across three sites (current scientific research, the underground psychedelics movement and shamanic practices). The talk will use examples from these sites to emphasize the social aspects of psychedelic use. In particular, it is argued that psychedelic experiences occur in collectivities, and are formed through the making of spaces of trust and promise.

PRESENTER ABSTRACTS

David Nutt

Hofmann Hall, Sunday 12th July, 11:30-12:00

Throwing The Baby Out With The Bathwater: How irrational drug laws are hampering medical research.

My talk will explore the damaging role that irrational laws such as the UN conventions that have been developed in a vain attempt to reduce drug use have had on research. I shall show how they have provided – either deliberately or inadvertently – the worse censorship of research in the history of science. The problem in the UK and many other countries is getting worse not better. The lost opportunities in terms of neuroscience and psychiatry are profound and we need to rectify the situation urgently.

Karoline Olsen

Osmond Auditorium, Saturday 11th July, 09:30-10:00

Ayahasca in Scandinavia: Motivations & Subjective Effects.

Based on data collected at two fortnight ayahasca ceremony retreats in 2014, the researchers are documenting demographic background variables of participants, analysing their motivations for participation in such ceremonies, and providing analysis of experienced effects, with a focus on spiritual effects. For conducting this analysis the methods utilized have included both quantitative and qualitative parts, such as use of the 100-item States of Consciousness/Mystical Experience Questionnaire, and narratives provided by the participants which were analysed using the Casto Spirituality Scoring System.

Genis Ona & Juan Spuch

Hofmann Hall, Friday 10th July, 11:30-12:00

What Happens after First Trip. A Longitudinal Study.

This talk presents data from a study exploring effects of LSD in naive participants using semistructured interviews and questionnaires measuring personality, psychopathology and life satisfaction. Questionnaires were taken before consumption, 14 hours post-consumption, and 45 days postconsumption. The preliminary results are fascinating: they show decreases in anxiety, psychopathology and depression, and the subjects experienced more satisfaction in their lives.

Jonathan Ott

Hofmann Hall, Saturday 11th July, 12:00-12:30

TBA

Maria Papaspyrou

Sabina Stage, Sunday 12th July, 09:30-10:00

The Sacred Synergy of Feminine and Entheogens.

Femtheogenic consciousness refers to the deep sources of wisdom that are held within the archetypal feminine and entheogenic journeys. Maria will outline the links between these two forces, and will consider how these links are also shared sources of suppression for both. Maria will discuss how the exile of Femtheogenic Consciousness has alienated us from ourselves, each other, Nature, and our link to what we once knew as the World Soul, and will explore the outcomes of that on an individual and a collective level.

Torsten Passie

Sabina Stage, Sunday 12th July, 15:30-16:00

LSD-assisted psychotherapy for anxiety associated with a lifethreatening disease: A qualitative study of acute and sustained subjective effects.

A recently published study showed the safety and efficacy of LSD-assisted psychotherapy in patients with anxiety associated with lifethreatening diseases. Participants of the study were included in a qualitative psychological study including a prospective follow-up. 12 months after finishing LSD psychotherapy, 10 participants were tested for anxiety (STAI) and participated in a semistructured interview. None of the participants reported lasting adverse reactions. Participants consistently reported insightful, cathartic and interpersonal experiences, accompanied by a reduction in anxiety (77.8%) and a rise in quality of life (66.7%).

Anthony Peake

Osmond Auditorium, Saturday 11th July, 17:00-17:30

The Pineal Portal? Lucia No3, Endogenous DMT and The Third Eye.

There is growing evidence that DMT is created in the brain by the pineal gland. This talk will present a model that links the production of DMT to the creation of "inner light" facilitated by the microtubule structures within the neurons. This will be an application of the ORCH-OR model of Hameroff and Penrose. I will then discuss the role of the pineal gland with regards to the aperiodic crystals ("Brain Sand"), the sigma 1 receptors and the Trace-Amine Associated Receptors. I will finally discuss the "nectar of transcendence" and suggest that this may be endogenous DMT following the tract left by the ascending of the pituitary/pineal body from the back of the throat to the centre of the brain after the 49th day of gestation.

PRESENTER ABSTRACTS

Daniela Peluso

Sabina Stage, Sunday 12th July, 10:00-10:30

Ayahuasca & the 'Feminine Mystique'.

Here I will discuss the relationship between ayahuasca and women in local and global settings while also addressing gender issues and concerns about essentialising femininity, gender relations and ayahuasca practices. Within this broader discussion, I will also examine the increased incidences of sexual seduction among shamans and their participants and what this means for global ayahuasca participants today.

Dale Pendell

Hoffman Hall, Saturday 11th July, 11:30-12:00

Lunar Meanders.

"... by characterizing it as other than himself, [the presence was] preserved, nourished, and secretly made strong."

--Salman Rushdie, *The Satanic Verses*

like gods, (the many) gods, budded off from the One, but then sovereign. (& the One, named, is already dyadic, born in fission.) A certain subtle strength is required to keep all those angels at bay, that they come when called, and take siesta when not needed, yes, because without that particular strength, which is really a kind of gentleness, they will move in and take over—that is why it is a poison path. So with all writing, and all creation.

Jani Pestana

Osmond Auditorium, Friday 10th July, 17:00-17:30

Psychedelics and the Holographic Paradigm.

This talk suggests that if we look upon the universe as having holographic principles, this could enhance our theoretical understanding of psychedelics. The presentation starts by explaining the features of the holographic paradigm - the holographic nature of both the brain and the universe, as put forward by Karl Pribram and David Bohm. Then we explore how this paradigm could help us understand psychedelics better, drawing from fieldwork in the Peruvian Amazon.

Daniel Petkoff

Shulgin Sessions, Sunday 12th July, 11:30-12:00

Targeting the Endocannabinoid System Through Osteopathic Manual Treatment for the Management of Early/middle Stages of Alzheimer's Disease.

Alzheimer's disease (AD) is a progressive, irreversible brain disorder that slowly impairs memory and thinking skills and eventually causes complete cognitive failure. Research suggests inflammation plays a major role in the AD brain, influencing the disease process by boosting the production of amyloid beta (A β) plaque and tau protein. The endogenous cannabinoids AEA and 2-AG downregulate production of pro-inflammatory mediators, lessen neuro-inflammation and block AD-related neurotoxicity. Since osteopathic manual treatment influences the endocannabinoid system, it is proposed that osteopathy could act as a significant adjunct treatment for the management of early/middle stages of Alzheimer's disease.

Daniel Pinchbeck

Sabina Stage, Sunday 12th July, 18:00-18:30

Psychedelic Initiation and the Ecological Mega-Crisis.

The ecological mega-crisis is an initiation for humanity: We will either evolve in consciousness and social practices to harmonize with the biosphere or we face extinction. To make this leap requires a collective realization: humanity, as a whole, represents a superorganism that is in a symbiotic relationship with the ecology of the planet as a whole system. Psychedelics such as LSD, mushrooms, and ayahuasca are powerful catalysts for shifting people into this systemic worldview. But once we have made this shift in worldview, how do we envision and enact the necessary systemic redesign of civilization, which includes technological, political economic systems, but also approaches to personal relationships and cultural beliefs?

Alan Piper

Hofmann Hall, Saturday 11th July, 10:30-11:00

Psychedelics, Transgression and the End of History.

Transgression was the essence of the twentieth century avant-garde and the royal road to insight, self-transformation and special knowledge from Baudelaire to William Burroughs and beyond. Psychedelics drugs became a touchstone of alterity and a key tool of a culture of resistance to the status quo, with an inherent aura of subversion, promising a positive transformation of the individual and society. However, has the transgressive in art, film and literature now been commoditised and marketed back to us, neutralising its transformative power? When psychedelics become NICE licensed medicines or approved for religious use will they have lost their mojo?

PRESENTER ABSTRACTS

Vit Pokorny

Osmond Auditorium, Sunday 12th July, 15:00-15:30

To Think from Psychedelic Experience: Philosophical Exploration of Psychedelic Experiences Exemplified on the Multiple Self Theory.

This presentation pursues the question of how to explore psychedelic experiences, and argues that one should “think from” and “along with” these experiences. Such an approach draws on the three fundamental sources: 1) phenomenology of perception and corporeal situatedness; 2) cognitive psychology of psychedelic experience; 3) the ecosemiotic theories. To think from psychedelic experiences means to think from the perspectives of experience itself.

Iker Puente

Shulgin Sessions, Sunday 12th July, 09:30-10:00

Subjective Effects of Holotropic Breathwork and Psychedelics: A comparison.

Subjective effects of Holotropic Breathwork and Psychedelics: a comparison. In this talk I will explore the subjective effects of Holotropic Breathwork (HB), specifically looking to the occurrence of mystical experiences or peak experiences, and I will compare the subjective effects of HB and different psychedelic compounds. The test used for the present study was the Peak Experience Profile (PEP). The aim of this study is to use for the first time the PEP to measure the subjective effects of HB, and to compare them with the subjective effects produced by different psychedelics.

Tim Read

Shulgin Sessions, Saturday 11th July, 12:00-12:30

Archaidelics Psychedelics as Amplifiers of the Archetypal.

What exactly are archetypes? What is the range and variety of archetypal experience? If archetypes involve a deeper layer of mind organised around meaning, then opening to archetypal psyche can lead to numinous - experience which may be beautiful or terrifying, sacred or dread filled. This talk proposes that psychedelics have the effect of increasing archetypal penetrance - with their use the archetypal domain becomes manifest. It will discuss some of the key concepts of archetypal psychology drawing on Plato, Jung and Grof among others, while concentrating on the elements of archetypal experience that have most relevance for the psychedelic explorer.

Andy Roberts

Osmond Auditorium, Friday 10th July, 10:30-11:00

The Man Who Turned on the World.

Of all the figures associated with the history of LSD there is perhaps none so enigmatic as Michael Hollingshead. Hollingshead appeared from nowhere in 1962 to turn Tim Leary on and was highly influential on Leary's years at Harvard, Millbrook and beyond. He was a key player in London's early LSD scene, lived with the Brotherhood of Eternal Love in California, turned KGB spy George Blake onto acid in prison, ran a psychedelic commune on a Scottish island, published an underground magazine, spent time in Nepal and eventually died a mysterious death in Bolivia. To some, Hollingshead was the ultimate psychedelic guru. To others he was a rip off artist, a conman and a charlatan.

Sean Roche

Osmond Auditorium, Sunday 12th July, 17:00-17:30

Consciousness Everywhere? Psychedelic Experience and the Philosopher's Mind.

People using psychedelics, as well as advanced meditators and mystics, report experiences of the dissolution of the boundaries of 'self', with an experience of becoming 'one' with the Universe. Such experiences were recognised by Freud, who coined the term 'oceanic experience'. The 'oceanic experience' presents a reality in which mind is unbounded - indeed seems to be the very fabric of reality. The view that consciousness itself might be the fundamental nature of all reality is gaining increasing appeal amongst some philosophers as a doctrine called 'Panpsychism'. Perhaps in removing certain inimical illusions of egofunction through mystical experience, a more direct access to reality becomes possible.

Leor Roseman

Shulgin Sessions, Saturday 11th July, 10:30-11:00

Neural Correlates of LSD-induced Complex Visual Hallucinations.

This talk will present images created by participants in a PhD study, the result of five different creative exercises. The presentation will consider why I designed the activities in such a way and what the results can teach us about the nascent culture of Amazonian Shamanism in Great Britain. My research focuses on four main themes: beliefs, motivations, perceived effects and the perceived value of participation in the associated practices. This particular section of the project will consider participants' relationships to various societal institutions, their perception of God, and phenomenological perspectives of ayahuasca.

PRESENTER ABSTRACTS

Kerry Rowberry

Sabina Stage, Friday 10th July, 11:30-12:00

A Visual Ethnography of Amazonian Shamanism in the UK.

By examining the relationship between the familiar arithmetic operations of addition and multiplication, we are led to some surprisingly deep ideas about both time (as experienced by human consciousness) and prime numbers. Since the 1980s, research into the mysterious way in which prime numbers scatter seemingly at random among the counting numbers has led to a number of unexpected connections being made between (pure, abstract) number theory and (spacio-temporally informed) dynamical systems theory. The implications of this for the intertwining mysteries of time and number will be explored."

William Rowlandson

Sabina Stage, Friday 10th July, 16:00-16:30

Altered States of Unconscious.

Borges wrote that elves 'are tiny and sinister. They steal cattle and children and also take pleasure in minor acts of deviltry.' His sources, though, were Nordic, AngloSaxon and mediaeval English. What would he say today if he were familiar with the literature of modern-day encounters with small beings often encountered through mushrooms or DMT? Are they still cattlenatchers? Why elves? Why now? The judgements of pathology, delusion or mere fantasy seem increasingly unhelpful and reductive explanations of the experience of encounter. Drawing in part on Jung's engagement with daimonic beings and in part on James Hillman's visions of the Imaginal, I investigate in this presentation the cultural resonance of elven experiences.

Deirdre Ruane

Shulgin Sessions, Friday 10th July, 09:30-10:00

The Harms of Prohibition: On the Frontline of 'Psychedelic A&E' at Transformational Festivals.

Harm reduction approaches to the use of psychedelics and other recreational drugs focus on minimising the risks and harms associated with them, rather than pushing for abstinence. These approaches have often been seen as controversial in the context of current drug legislation, thought to be condoning or even encouraging the use of drugs – while many in psychedelic culture believe they don't go far enough. This presentation will show early findings from fieldwork in Portugal, the US and the UK, tell stories of breakthroughs and narrowly averted train wrecks witnessed in the course of the work, and give my preliminary impressions of the effects of drug policy in different countries on the experiences of drug users.

Carl Ruck

Sabina Stage, Sunday 12th July, 17:00-17:30

The Gaia Project: The Message of the Mysteries to the World.

In the 1970s, Carl was a member of a team that attempted to reconstruct what happened in the ceremony of the Eleusinian Mystery. They demonstrated that the initiates were afforded a glimpse into a transcendent reality—something experienced by almost all the great figures of Classical antiquity, as well as common people, regardless of sex or social class. Thirty years later, he returned to the subject to present a clearer explanation, incorporating many new discoveries made in the intervening years. "Only a new Eleusis could help mankind to survive the threatening catastrophe in Nature and human society and bring a new period of happiness." - Albert Hofmann

Susan Mosher Ruiz

Sabina Stage, Friday 10th July, 12:00-12:30

Profiles of American Psychedelic Users: Insights from the National Survey on Drug Use and Health.

The National Survey on Drug Use and Health (NSDUH) is conducted annually by the U.S. Substance Abuse and Mental Health Services Administration. The most recently available NSDUH results (2013) estimate that nearly 40 million people in United States are lifetime psychedelic users. This represents an estimated 15% of the population aged 12 and older. The present talk will provide an overview of recent NSDUH results and multiyear trends regarding psychedelics. It will further provide critical reviews of studies examining relationships between psychedelic use and other health measures, the results of which vary widely.

Luc Sala

Osmond Auditorium, Friday 10th July, 14:30-15:00

Ritual Journeying: The magical perspective.

In almost every culture there is the use of some kind of psychoactive substance in a ritual context. Ayahuasca, soma, mushrooms, mescal, tobacco, and even alcohol are used to journey into the intangible dimensions where time and place, dream and reality swirl and move, and magic comes closer. This talk will outline what the essential role of a ritual is, why psychedelics are used and how ritual techniques can make journeying safer, more effective and more healing. Whether done by way of dancing, drumming, fasting, with great pomp and circumstance or as an individual meditative ritual like in praying or yoga, the purpose is to free oneself from the rational, the logical fetters of the mind and enter into another state, another world.

PRESENTER ABSTRACTS

Chris Salway

Sabina Stage, Saturday 11th July, 15:30-16:00

Psychonauts Going Psychonuts.

This talk will discuss what is meant by schizophrenia and psychosis, and how psychotic episodes may herald an acute healing crisis. This involves exploring the role of previous trauma in the individual. The Open Dialogue approach will be described, in which the idea is to go with the process and see what issues come up rather than suppress or judge emotions and thoughts the individual is experiencing. The talk will discuss how psychedelics can potentially induce psychotic episodes, how the use of psychedelics by mental health workers can help foster empathy, and how altered states induced by psychosis can be pleasant and profound (and may be willfully exacerbated by heavy use of psychedelics).

Gregory Sams

Osmond Auditorium, Friday 10th July, 17:30-18:00

Drugs, Divine Light, and Quantum Theory.

Did sacramental drug use spark a new concept in religion? We may never be sure which preparation it was that took one "where the inextinguishable light shines, the world where the sun was placed, in that immortal unfading world." We do know that users of haoma and soma envisioned new concepts of divinity, placing light and its local source at the heart of creation. Zoroaster, the Vedas and Akhenaten had insights into the nature of light that would be misunderstood for millennia but which now make perfect sense in the light of quantum physics.

David Graham Scott

Sabina Stage, Sunday 12th July, 14:30-15:00

Rooting for Recovery.

Documentary filmmaker, David Graham Scott, will present his award winning film, *Iboga Nights*, and discuss the use of the African shamanic plant root *iboga* for treating drug addiction. How effective are *iboga* and its chemical derivative, *ibogaine*, in alleviating withdrawal pain and what are the drawbacks of underground treatment provision? The filmmaker will talk about his own treatment with *ibogaine* and how it helped end a long term opiate habit. *Iboga* fatalities shall be discussed and precautions that must be taken.

Ben Sessa

Hofman Hall, Sunday 12th July, 09:30-10:00

Using Psychedelic-Assisted Psychotherapy to Treat Addictions.

Since the work of Osmond and colleagues in 1950s Canada, psychedelics have played an important role in treating addictions. In this talk Dr Sessa, a consultant psychiatrist working in addiction, will explore the psychedelic experience as a platform for personality change that can be honed in therapy to help addicts tackle rigid and habitual behaviours. Contemporary studies using psilocybin, ketamine and *ibogaine* will be discussed, exploring the role of psychedelics as treatments for alcohol, heroin, cocaine and nicotine addiction.

Giulio Sica

Osmond Auditorium, Sunday 12th July, 11:30-12:00

Who gets to Tell the Story? Asserting Psychedelic and Spiritual Narratives in a Materialist Media Hegemony.

Media narratives of the psychedelic experience have been riddled with inconsistencies. At the root of the dominant cultural narrative is a fear of the worldview that the subjective psychedelic experience presents to society and the challenge that it implies. Both psychedelia and spirituality have been shown in a scientific context to alleviate psychological suffering, yet the dominant media narrative sees political challenges to the established legal framework derived from the psychedelic and spiritual counterculture as a threat to social order. This creates a justification of the political decision to keep drugs illegal. So how can this narrative be challenged when there is no coherent vision and much disagreement on what the psychedelic experience constitutes?

Carl H. Smith

Shulgin Sessions, Sunday 12th July, 10:00-10:30

The Development of a Hybrid Ecology Framework for Psychedelic Technologies.

How can we develop and use emerging hybrid technologies to induce psychedelic and non-ordinary states of consciousness? Through the development of hybrid technologies can we hack the individual's sense of self and relationship to the world? Can we adapt and transform the dominant perceptive regimen which is still based on the Cartesian subject-object separation? We are entering a new perceptual paradigm where form, content, and context are merging. As a result radical new forms of awareness are becoming available. We will examine which technologies, techniques and methodologies can be used to enable new types of conscious states.

PRESENTER ABSTRACTS

Pieter Stokkink

Osmond Auditorium, Sunday 12th July, 15:30-16:00

What are the Implications of the Psychedelic Experience for Philosophy?

One of the reasons that philosophy has given little attention to psychedelics is because of the ineffability of the experience. This presentation proposes that we take the ineffable as ineffable and reframe our notion of truth, meaning and derivative concepts accordingly. What if Truth, capital T, is indeed ineffable, yet accessible in practice? What if meaning is bigger than understanding something lingual? What if language and representation are mere tools that can help us understand something, rather than representatives of what is being understood?

Matthew Strange

Osmond Auditorium, Sunday 12th July, 16:00-16:30

The Journey So Far: The Origin of my Becomings.

What stimuli, experiences and interactions culminate in creating a single identity? Do single identities even exist? Ubuntu suggests we are who we are because of who we all are; a collective element which connects us all. Are we aware of our becomings? The path we walk, both as people and people's, and what is the purpose of knowing, being and awareness. What are those crucial elements which allow us to perceive the world as we do? And what to do with elevated consciousness.

Rick Strassman (Skypedelia)

Sabina Stage, Friday 10th July, 17:30-18:00

Theoneurology: One New Model for Religious Experience Provides an Alternative to Two.

Current models for the spiritual properties of the psychedelic drug state emphasize the bottom up neurotheological paradigm. In addition, the unitivemystical state—a formless, ego-free, ecstatic experience, free of verbal content—has become the goal of the psychedelic experience both within the academic and lay communities. The challenges presented by DMT's effects led me to develop a top-down, theistic model in which the interactive-relational experience attains co-equality with the unitivemystical. This model also suggests the potential utility of the Hebrew Bible as a uniquely Western tool for understanding and integrating the spiritual properties of the psychedelic drug state.

Swasti

Osmond Auditorium, Sunday 12th July, 12:00-12:30

On "Object manipulators", psychedelic festivals and contemporary youth sociopolitical participation.

This presentation, which draws upon long-term ethnographic fieldwork around psychedelic use in Amsterdam, examines the ways in which a particular group of fire-"object manipulators" come together, learn, teach, and engage in fire performances. The talk will examine their entanglement in various historic, trans-local, material, and chemical flows that are transforming how contemporary youth engages in creativity, learning and new leisure styles. Following Riley et.al (2010) on 'leisure as a new site for political participation', I reflect upon these performances and the use of psychedelics around them, as empowering bottom-up youth led experiments.

Ingrid Tartakowsky

Shulgin Sessions, Friday 10th July, 17:00-17:30

Classification of the catalyzing effects of LSD, MDMA and psilocybin that have a therapeutic potential into the drugassisted psychotherapy framework.

Presentation of qualitative research related to various elements of drug-assisted psychotherapy with LSD, MDMA and psilocybin. Ingrid conducted in-depth interviews with seven psychedelic therapists, and then worked with that information using a content analysis methodology. The results have informed the development of a classification related to the catalyzing effects of such substances that have a therapeutic potential, which can be distributed into three categories: states, operations and phenomena.

Kalliopi Tavoulari

Shulgin Sessions, Saturday 11th July, 16:00-16:30

Psychedelics & War.

Since antiquity, substantial evidence suggests that War and Psychedelics were closely affiliated: as early as 700BC, Mongolian warriors used marijuana as they trekked through the Gobi Dessert; historical use of Amanita, through the ingestion of reindeer urine, is reported to have started by these same Mongolians. Before going into battle, the kingdoms of Ancient Greece would seek advice from the Oracle, who obtained visions from mindaltering fumes. The Spartans would burn resin mixed with sulphur to produce 'roman fire', but sulphur mixed with cannabis plants was also used to discombobulate oncoming combatants. These examples and countless more will be presented in this historical journey.

PRESENTER ABSTRACTS

Stephen Turner

Hofmann Hall, Friday 10th July, 10:30-11:00

Mindfulness & Psychedelic Therapy: A powerful combination?

Both Mindfulness practice and psychedelic therapy are believed to exercise their effects through (or partly through) the inhibition of the default mode network, which is believed to be the neurobiological correlate of the ego. This presentation will discuss these findings and present the hypothesis that combining Psychedelic Therapy with Mindfulness practice may exercise a synergistic effect with better clinical outcomes. I will conclude with presenting the further hypothesis that this combination may promote increase empathy in subjects, with potentially better outcomes in the treatment of sociopathy.

Lauren Unger

Sabina Stage, Friday 10th July, 10:30-11:00

Lessons in Psychic Therapy Through the Use of Psychedelics: On the Peyote Road

Indigenous people of the Americas found many therapeutic methods for treating illness, among them is a specific psychic treatment involving the use of the peyote cactus. The ceremony begins at sundown, sacred tobacco rolled in corn husks is lit and prayers begin sounding. While physical ills are treated, it is a primarily psychic treatment, and there are many ways in which one must prepare if they are to journey with peyote. As my friend and healer, Charles Begay, of the Navajo/Dine, said, "peyote is a long road." This talk will discuss the wisdom of the Navajo healers, include a personal account of a Native American Peyote Church Ceremony, and will leave the audience with ten lessons in psychic therapy to consider.

Manuel Villaescusa

Osmond Auditorium, Saturday 11th July, 10:00-11:00

Ayahuasca Group Therapy: A Protocol for Ayahuasca Use In Group Settings.

For the last eight years Manuel has been working with several groups of around twenty participants, celebrating four ayahuasca ceremonies each year, one every season. This presentation describes the protocol that we have been following for these eight years and how it has evolved through different traditions: Amazonian mestizo vegetalismo, indigenous ayahuasca shamanism, Brazilian syncretic traditions and western group psychotherapy. The steps for preparing an ayahuasca session are discussed, alongside the different phases of the session and the legal and ethical aspects of the work.

Simon Wells

Sabina Stage, Saturday 11th July, 17:00-17:30

Charles Manson: Seeds of a Nightmare

Simon Wells, author of the bestselling book "Coming Down Fast" investigates Charles Manson's usage of psychedelics in the building of his so-called "Family" of devotees. Utilising original documents and firsthand witness statements, Wells traces Manson's evangelistic use of LSD through the "Summer of Love" and onwards towards the notorious Tate/Labianca murders of August 1969. The Beatles' "White" album providing a hallucinogenic soundtrack to his crazed ramblings, and with the landscape of Death Valley, California processing his apocalyptic prophecies into a reality, Wells decodes the reasons behind Manson's hypnotic power and influence on his followers.

Kai Wingo

Osmond Auditorium, Friday 10th July, 12:00-12:30

Women & Entheogens

With a culturally rich psychedelic history, we will focus on the use of psychoactive mushrooms in the cultivation of society and explore how women all over the world use entheogens and the feminine aspects of those contributions. We will cover roles that women like Valentina Wasson, Maria Sabina and Rosemary Woodruff Leary played in the early impetus of the psychedelic movement and discuss how women helped to shape its citizens utilizing altered states of consciousness. The number of studies grow daily with claims to what it seems indigenous people knew all along; entheogens can enhance every part of our lives from women in child birth to healing our bodies by accessing DNA to changing the mind set of people engaging in harmful behaviors.

Lucy Wyatt

Shulgin Sessions, Saturday 11th July, 15:30-16:00

Psychedelics, Alchemy & the Hidden History of Civilisation - Part 2.

It is time for shamanism to 'come out of the jungle' and be acknowledged in its true context as the stimulus for the original ancient cities. This paper will focus on the cultural barriers that have, however, prevented us from knowing about this context and the importance of 'civilised' shamanism. It will explore the historic role of the IndoEuropeans, in particular from the Iron Age onward (c 1200 BC), in shaping our ignorance of the 'city' people; and suggest that this legacy possibly informs modern Western negative attitudes toward psychedelia.

PRESENTER ABSTRACTS

Peter Yates

Osmond Auditorium, Friday 10th July, 16:00-16:30

Blessed are the Forgetful: Psychedelia, Memory & Time.

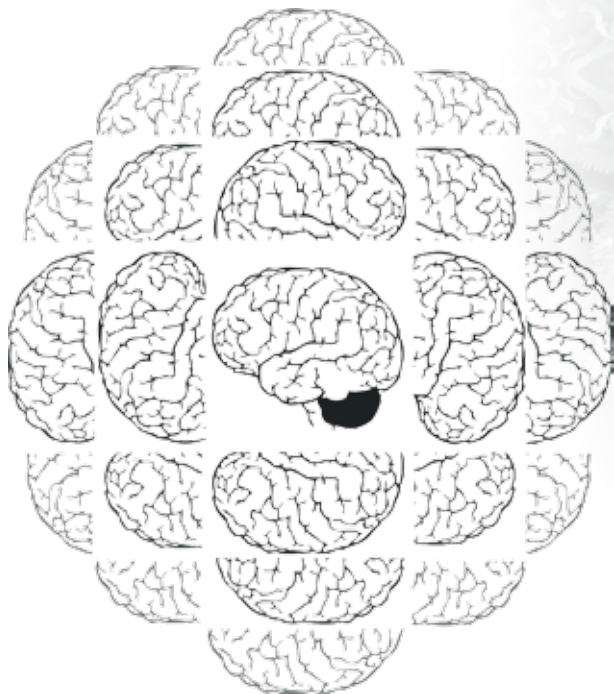
This talk explores the relationship between psychedelic experience and memory. Peter shall draw on first hand accounts and theoretical models from the psychedelic literature as well as on Nietzsche's suggestive account of memory and its role in lived experience and social organisation. This proves to be an enquiry which branches off in many directions but I shall confine myself to elucidating and considering the variety of modes of action of impressions of the past on consciousness that psychedelic ingestion seems to be able to induce and then to attempting to discern the significance, if any, of that very variety. I conclude with what these enquiries end up implying about ourselves, considered both individually and collectively.

Aleksander Zielinski

Osmond Auditorium, Friday 10th July, 15:30-16:00

Distortion? Dilation? Disappearance? – The influence of psychedelics on our perception of time.

Time is one of the fundamental categories of human experience and perception. It is one of the defining aspects of psychedelics that they have the potential to shake up our most fundamental beliefs about the nature of ourselves as well as the nature of reality. It is thus not surprising that many trip reports bear witness to a confrontation with the nature of time and often report apparently abnormal experiences of time. However, since time is a fundamental category of human experience, it has to be expected that insights related to this concept will also result in new beliefs about the nature of self and/or reality.



NEURO-PSYCHOLOGY PT.1

Chair: Luke Williams

09:30	ON MOLLUSCS, MAN & PSYCHEDELIA: THE NECESSITY OF SKEPTICAL MANTRAS IN THE ORCHESTRATION OF PSYCHEDELIC STUDIES IN NEUROSCIENCE Zachary Bellman
-------	--

10:00	CASE REPORT OF A HIGH FREQUENCY, NONCLINICAL HALLUCINOGEN USER J. Lyke & J. Kuti
-------	--

10:30	MINDFULNESS & PSYCHEDELIC THERAPY: A POWERFUL COMBINATION? Stephen Turner
-------	---

11:00	BREAK
-------	--------------

NEURO-PSYCHOLOGY PT.2

Chair: Luke Williams

11:30	WHAT HAPPENS AFTER FIRST TRIP. A LONGITUDINAL STUDY G. Ona & J. Spuch
-------	---

12:00	PSYCHEDELIC MIND ONLINE – PHENOMENOLOGY AND EFFECTS OF TRANSPERSONAL EXPERIENCES E. Fountoglou & T. Freimoser
-------	---

12:30	CONCEPTS OF PSYCHEDELIC DRUGS AS THERAPEUTIC AGENTS Tomislav Majic
-------	--

13:00	LUNCH
-------	--------------

CANNABIS & CANNABINOIDS PT.1

Chair: Dave King

14:30	HUMAN RIGHTS, PUBLIC HEALTH & MEDICINAL CANNABIS USE Melissa Bone
-------	---

15:00	TRANSGRESSION AND ECONOMY DURING DRUG REFORM Jonathan Newman
-------	--

15:30	CANNABIS: WHY DO WE NEED TO KNOW MORE ABOUT ITS CHEMICAL COMPOSITION? Michael Heinrich
-------	--

16:00	CANNABIS: WHY DO WE NEED TO KNOW MORE ABOUT ITS CHEMICAL COMPOSITION? Val Curran
-------	--

16:30	BREAK
-------	--------------

CANNABIS & CANNABINOIDS PT.2

Chair: Dave King

17:00	THE DISCOVERY OF THE ENDOCANNABINOID SYSTEM AND ITS IMPORTANCY FOR TREATMENT WITH CANNABIS Lumir Hanus
-------	--

17:30	PANEL SESSION
-------	----------------------

18:00	WHITHER CANNABINOPATHIC MEDICINE Lester Grinspoon (Skype)
-------	---

SOCIAL RESEARCH ON SUBJECTIVE EXPERIENCE PT.1

Chair: Tim Read

09:30	NARRATIVES OF PSYCHEDELIC EXPERIENCES: THE QUEST FOR 'TRUTH', 'SELF', MEANING & TRANSFORMATION Elizabeth Hughes
10:00	INTEGRATIVE USE OF PSYCHEDELICS NEW PERSPECTIVES FOR RESEARCH, PUBLIC DISCOURSE AND PERSONAL DEVELOPMENT H. Jungaberle & A. Zeuch
10:30	LESSONS IN PSYCHIC THERAPY THROUGH THE USE OF PSYCHEDELICS: ON THE PEYOTE ROAD Lauren Unger
11:00	BREAK

SOCIAL RESEARCH ON SUBJECTIVE EXPERIENCE PT.2

Chair: Tim Read

11:30	A VISUAL ETHNOGRAPHY OF AMAZONIAN SHAMANISM IN THE UK Kerry Rowberry
12:00	PROFILES OF AMERICAN PSYCHEDELIC USERS: INSIGHTS FROM THE NATIONAL SURVEY ON DRUG USE AND HEALTH Sue Mosher Ruiz
12:30	THE POLITICS OF THE PSYCHEDELIC EXPERIENCE: SPACE AS SHARED PROCESS Tehseen Noorani
13:00	LUNCH

DMT ENTITIES PT.1

Chair: David Luke

14:30	HOW DOES ONE PROVE ONE'S-ELF? EXPLORING THE ONTOLOGY OF DISCARNATE ENTITIES IN THE DMT REALM David Luke
15:00	ON THE NATURE OF THE PSILOCYBE FOLK: PSYCHEDELIC ENTITY ENCOUNTERS AND THE PROBLEM OF SPIRITS Jack Hunter
15:30	WHAT IS IT LIKE TO BE A MACHINE ELF? Andrew Gallimore
16:00	ALTERED STATES OF UNCONSCIOUS William Rowlandson
16:30	BREAK

DMT ENTITIES PT.2

Chair: David Luke

17:00	THE ENIGMA OF DMT ENTITIES Daniel Pinchbeck
17:30	THEONEUROLOGY: ONE NEW MODEL FOR RELIGIOUS EXPERIENCE PROVIDES AN ALTERNATIVE TO TWO Rick Strassman (Skype)

PERSONALITIES IN PSYCHEDELIA

Chair: Joey Mellen

09:30	IN THE PROVINCE OF THE MIND: THE LIFE AND TIMES OF DR JOHN C. LILLY Craig Inglis
-------	--

10:00	THE PERMISSION OF VÓ NADIR: DAIME RELIGIONS AND THE CONSISTENCY OF RELATIONSHIPS Alberto Groisman
-------	---

10:30	THE MAN WHO TURNED ON THE WORLD Andy Roberts
-------	--

11:00	BREAK
-------	--------------

PAN-AFRICAN SESSION

Chair: Darren Springer

11:30	THE PURPOSEFUL USE OF ENTHEOGENS FOR THE EXAMINATION, INVESTIGATION AND CREATION OF HUMAN ARCHETYPES Moudou Baqui
-------	---

12:00	WOMEN & ENTHEOGENS Kai Wingo
-------	--

12:30	PSILOCYBIN: A TOOL OF EXPLORATION? Kilindi Iyi
-------	--

13:00	LUNCH
-------	--------------

TIME & SPACE PT.1

Chair: Adrian Parker

14:30	RITUAL JOURNEYING: THE MAGICAL PERSPECTIVE Luc Sala
-------	---

15:00	TIME, ORDER AND SYMMETRY BREAKING IN THE COSMOLOGICAL UNIVERSE Will McCutcheon
-------	--

15:30	DISTORTION? DILATION? DISAPPEARANCE? – THE INFLUENCE OF PSYCHEDELICS ON OUR PERCEPTION OF TIME Aleksander Zielinski
-------	---

16:00	BLESSED ARE THE FORGETFUL: PSYCHEDELIA, MEMORY & TIME Peter Yates
-------	---

16:30	BREAK
-------	--------------

TIME & SPACE PT.2

Chair: Adrian Parker

17:00	PSYCHEDELICS AND THE HOLOGRAPHIC PARADIGM Jani Pestana
-------	--

17:30	DRUGS, DIVINE LIGHT, AND QUANTUM THEORY Gregory Sams
-------	--

HARM REDUCTION

Chair: Jonas di Gregorio

09:30	THE HARMS OF PROHIBITION: ON THE FRONTLINE OF 'PSYCHEDELIC A&E' AT TRANSFORMATIONAL FESTIVALS Deirdre Ruane
10:00	HOW TO TEST YOUR OWN DRUGS Guy Jones
10:30	THE MANUAL OF PSYCHEDELIC SUPPORT Svea Nielsen
11:00	BREAK

DRUG POLICY & REFORM

Chair: Aimee Tollan

11:30	LEGAL UNCERTAINTY AND TROUBLING TRENDS: AYAHUASCA AND OTHER PLANT PSYCHEDELICS IN AND OUT OF THE ENGLISH COURTS Jonathan Hobbs
12:00	NEW MORAL AGENCIES AND STRICT LIABILITIES Darryl Bickler
12:30	ASSESSING SERIOUS EVIL: BIOETHICAL ISSUES OF DRUG CONTROL Levente Moro
13:00	LUNCH

CLINICAL APPLICATIONS PT.1

Chair: Chris Salway

14:30	KETAMINE FOR DEPRESSION: A PILL FOR ALL PAINS? Tharcila Chaves
15:00	AN FMRI INVESTIGATION INTO THE ACUTE EFFECTS OF MDMA ADMINISTRATION IN CHRONIC, TREATMENTRESISTANT PTSD Mat Hoskins
15:30	A MIXED METHOD INVESTIGATION OF AYAHUASCA CEREMONIES AS A CANDIDATE THERAPY FOR BIPOLAR DISORDER AND CYCLOTHYMIA Benjamin Mudge
16:00	PSYCHOTHERAPEUTIC IMPLICATIONS OF AYAHUASCA USE IN ADDICTION TREATMENT Rita Kocarova
16:30	BREAK

CLINICAL APPLICATIONS PT.2

Chair: Chris Salway

17:00	CLASSIFICATION OF THE CATALIZING EFFECTS OF LSD, MDMA AND PSILOCYBIN THAT HAVE A THERAPEUTIC POTENCIAL INTO THE DRUG-ASSISTED PSYCHOTHERAPY FRAMEWORK Ingrid Tartakowsky
17:30	REALIZING TRANSFORMATION: INTEGRATION AND CONTINUING CARE IN THE PSYCHEDELIC TREATMENT OF ADDICTION John Harrison

HUMANITIES PT.1

Chair: Cameron Adams

09:30 **LSD POETICS & THE EVERYDAY**
Robert Dickins

10:00 **PSYCHEDELIC DRUGS: SACRED AND PROFANE**
Robert Forte

10:30 **PSYCHEDELICS, TRANSGRESSION AND THE END OF HISTORY**
Alan Piper

11:00 **BREAK**

HUMANITIES PT.2

Chair: Cameron Adams

11:30 **LUNAR MEANDERS**
Dale Pendell

12:00 **TBC**
Jonathan Ott

12:30 **PANEL SESSION**

13:00 **LUNCH**

PSYCHEDELIC THERAPY PT.1

Chair: Ben Sessa

14:30 **YOUR HUMAN RIGHT TO USE PSYCHEDELICS**
Teri Krebs

15:00 **MDMA-ASSISTED THERAPY FOR SOCIAL ANXIETY IN AUTISTIC ADULTS**
Alicia Danforth

15:30 **KICKING (CIGARETTE) BUTT: PSYCHEDELIC TREATMENT OF TOBACCO AND OTHER ADDICTIONS**
Matt Johnson

16:00 **KETAMINE FOR TREATMENT-RESISTANT DEPRESSION: THE FIRST 500 INFUSIONS**
Rupert McShane

16:30 **BREAK**

PSYCHEDELIC THERAPY PT.2

Chair: Ben Sessa

17:00 **THE LATEST DEVELOPMENTS IN MAPS' RESEARCH**
Rick Doblin

17:30 **PANEL SESSION**

SKYPEDELIA

Chair: Ben Sessa

18:00 **TBA**
Ralph Metzner

DRUG POLICY DEBATE: LEARNING FROM MISTAKES PT.1

Chair: Aimee Tollan

09:30 **BENEFICIARIES AND BENEFACTORS: WINNERS AND LOSERS IN THE POSTPROHIBITION WORLD**
Danny Kushlick

10:00 **THE LIFE AND DEATH OF JAKE COE: WHEN THE PERSONAL BECOMES POLITICAL AND VICEVERSA**
Cara Lavan

10:30 **A MEDICAL PERSPECTIVE ON DRUG POLICY**
Ben Sessa

11:00 **BREAK**

DRUG POLICY DEBATE: LEARNING FROM MISTAKES PT.2

Chair: Aimee Tollan

11:30 **PROHIBITION: A POLICE PERSPECTIVE**
Tom Lloyd

12:00 **PANEL SESSION**

12:30 **PANEL SESSION**

13:00 **LUNCH**

PSYCHEDELIC RISK MANAGEMENT PT.1

Chair: Dave King

14:30 **SEDUCTION BY K: PROMISES AND PITFALLS**
Celia Morgan

15:00 **DEALING WITH POWERFUL, DIFFICULT, EMOTIONALLY INTENSE EXPERIENCES IN THE CONTEXT OF PSYCHOLYTIC THERAPY**
Friederike Fischer

15:30 **PSYCHONAUTS GOING PSYCHONUTS**
Chris Salway

16:00 **SOCIAL MEDIATION OF PSYCHEDELIC PHENOMENOLOGY AND THE INTERPRETATION OF EMERGENT PROPERTIES**
Cameron Adams

16:30 **BREAK**

PSYCHEDELIC RISK MANAGEMENT PT.2

Chair: Dave King

17:00 **CHARLES MANSON: SEEDS OF A NIGHTMARE**
Simon Wells

17:30 **PANEL SESSION**

SKYPEDELIA

Chair: Dave King

18:00 **MICRODOSING: EARLY FINDINGS, REMARKABLE RESULTS**
Jim Fadiman

AYAHUASCA 1

Chair: Daniela Peluso

09:30	AYAHUASCA IN SCANDINAVIA: MOTIVATIONS & SUBJECTIVE EFFECTS K. Olsen & R. Eikeland
10:00	AYAHUASCA GROUP THERAPY: A PROTOCOL FOR AYAHUASCA USE IN GROUP SETTINGS Manuel Villaescusa
10:30	THE TRADITIONAL MEDICINE OF THE AMAZON JUNGLE – THE WAY INTO WESTERN SOCIETY AND THE RETURN TO THE ORIGIN Heiner Dorfler
11:00	BREAK

AYAHUASCA 2

Chair: Daniela Peluso

11:30	TOOLS FOR NAVIGATING ALTERED STATES & THE AYAHUASCA EXPERIENCE Meriana Dinkova
12:00	SOMA AND AYAHUASCA (PART 2) Matthew Clark
12:30	AYAHUASCA: TOURISM VS. TRADITION Jeronimo Mazarazza
13:00	LUNCH

DMT: NEXUS PT.1

Chair: Macre

14:30	WHO'S TRIPPING WHOM? Sam Gandy
15:00	TRYPTAMINE PLANT MYTHOS & USAGE: OLD AND NEW Nen
15:30	UNRAVELING THE VINES: PHYTOCHEMICAL ANALYSIS FROM THE DMT-NEXUS Raph Borges
16:00	CRIMINALS AND RESEARCHERS: PERSPECTIVES ON THE NECESSITY OF UNDERGROUND RESEARCH David Nickles
16:30	BREAK

DMT: NEXUS PT.2

Chair: Macre

17:00	THE PINEAL PORTAL? LUCIA NO₃, ENDOGENOUS DMT AND THE THIRD EYE Anthony Peake
17:30	THE POSSIBLE ROLE OF DMT IN OXIDATIVE STRESS AND AT THE END OF LIFE Ede Frecska

LSD NEUROCOGNITION

Chair: Robin Carhart-Harris

09:30 **A NEUROIMAGING STUDY ON THE EFFECTS OF LSD ON THE SUBJECTIVE EXPERIENCE OF MUSIC**
Mendel Kaelen

10:00 **EFFECTS OF LSD ON LEXICAL RETRIEVAL DURING PICTURE NAMING**
Neiloufar Family

10:30 **NEURAL CORRELATES OF LSD-INDUCED COMPLEX VISUAL HALLUCINATIONS**
Leor Roseman

11:00 **BREAK**

PSYCHOLOGICAL THEORY

Chair: Will Rowlandson

11:30 **VIOLATING EXPECTATIONS IN DEPRESSION & THE ANTIDEPRESSANT MECHANISMS OF ALTERED STATES OF CONSCIOUSNESS**
Paul Likhaitzky

12:00 **ARCHAIDELICS - PSYCHEDELICS AS AMPLIFIERS OF THE ARCHETYPAL**
Tim Read

12:30 **ARCHETYPES AND THE COLLECTIVE UNCONSCIOUS: JUNGIAN INSIGHTS INTO PSYCHEDELIC EXPERIENCE**
Scott J. Hill

13:00 **LUNCH**

PSYCHEDELIC HISTORY PT.1

Chair: Alan Piper

14:30 **WERE MUSHROOMS A WOMEN'S SECRET?**
Mike Crowley

15:00 **A PSYCHEDELIC TECHNOLOGY: HOW SET AND SETTING SHAPED THE AMERICAN PSYCHEDELIC EXPERIENCE 1950-1970**
Ido Hartogsohn

15:30 **PSYCHEDELICS, ALCHEMY & THE HIDDEN HISTORY OF CIVILISATION - PART 2**
Lucy Wyatt

16:00 **PSYCHEDELICS & WAR**
Kalliopi Tavoulari

16:30 **BREAK**

PSYCHEDELIC HISTORY PT.2

Chair: Alan Piper

17:00 **EVALUATION OF GOOGLE'S NGRAM ANALYTIC TOOL APPLIED TO WORLD LITERATURE ON PSYCHEDELIC DRUGS**
Michael Montagne

17:30 **DEMONIZING THE ENTHEOGENIC EXPERIENCE IN EARLY MODERN EUROPE**
Thomas Hatsis

MECHANISMS PT.1

Chair: Ben Sessa

09:30 USING PSYCHEDELIC-ASSISTED PSYCHOTHERAPY TO TREAT ADDICTIONS
Ben Sessa

10:00 PSYCHEDELICS IN SCIENCE & MEDICINE
Robin Carhart-Harris

10:30 RESEARCH AT THE BOUNDARIES OF PROHIBITION: MOVING FORWARDS
Amanda Feilding

11:00 BREAK

MECHANISMS PT.2

Chair: Ben Sessa

11:30 THROWING THE BABY OUT WITH THE BATHWATER: HOW IRRATIONAL DRUG LAWS ARE
HAMPERING MEDICAL RESEARCH
David Nutt

12:00 RANDOM SELECTIONS: FROM RESEARCH TOOLS TO RESEARCH CHEMICALS
David Nichols

12:30 PANEL SESSION

13:00 LUNCH

ART, CREATIVITY & CONSCIOUSNESS PT.1

Chair: Aimee Tollan

14:30 ART AS A MIND ALTERING DIALOGUE
Pete Loveday

15:00 BREAKING THE MIRROR
Cyriak

15:30 VISIONARY ART, CONTEXT AND PERSPECTIVES
Stuart Griggs

16:00 VISIONARY ART, ENTHEOGENS & SPIRITUAL DEVELOPMENT
Luke Brown

16:30 BREAK

ART, CREATIVITY & CONSCIOUSNESS PT.2

Chair: Aimee Tollan

17:00 GNOSIS AND ART
Daniel Mirante

17:30 ART, CREATIVITY AND CONSCIOUSNESS
Martina Hoffmann

SKYPEDELIA

Chair: Aimee Tollan

18:00 PSYCHEDELICS AND DEATH: A BRIEF INTRODUCTION
Neal Goldsmith

FEMTHEOGENS PT.1

Chair: Maria Papaspyrou & David Luke

09:30	THE SACRED SYNERGY OF FEMININE AND ENTHEOGENS Maria Papaspyrou
10:00	AYAHUASCA & THE 'FEMININE MYSTIQUE' Daniela Peluso
10:30	HER SHARE OF DIVINE MADNESS: WOMEN AND THE FEMININE IN ANCIENT ECSTATIC RITUALS Chiara Baldini
11:00	BREAK

FEMTHEOGENS PT.2

Chair: Maria Papaspyrou & David Luke

11:30	TOWARDS A RADICAL UNCERTAINTY Anna Luke
12:00	THE PERCEPTION OF FEMININE PERSONAS IN PSYCHOACTIVE SPECIES Kat Harrison
12:30	PANEL SESSION
13:00	LUNCH

TRANSFORMATIONS WITH PSYCHEDELICS PT.1

Chair: Cameron Adams

14:30	ROOTING FOR RECOVERY David Graham Scott
15:00	THE JOHNS HOPKINS PSILOCYBIN RESEARCH PROJECT: MYSTICAL EXPERIENCES, CHALLENGING EXPERIENCES, AND RISKS Roland Griffiths
15:30	LSD-ASSISTED PSYCHOTHERAPY FOR ANXIETY ASSOCIATED WITH A LIFE-THREATENING DISEASE: A QUALITATIVE STUDY OF ACUTE AND SUSTAINED SUBJECTIVE EFFECTS Torsten Passie
16:00	PSYCHEDELIC THERAPY: NOTES FROM THE UNDERGROUND Andrew Feldmar
16:30	BREAK

TRANSFORMATIONS WITH PSYCHEDELICS PT.2

Chair: Cameron Adams

17:00	THE GAIA PROJECT: THE MESSAGE OF THE MYSTERIES TO THE WORLD Carl Ruck
17:30	PANEL SESSION
18:00	PSYCHEDELIC INITIATION AND THE ECOLOGICAL MEGA-CRISIS Daniel Pinchbeck

LITERATURE & MUSIC

Chair: Rob Dickins

09:30	THE BEAT WRITERS & THE PSYCHEDELIC MOVEMENT Roger Keen
10:00	ARCADIAN ELECTRICITY: 'PSYCHEDELICNESS' IN ENGLAND'S PSYTRANCE CULTURE AND SONIC AESTHETIC Gemma Farrell
10:30	THE REAL SECRET OF MAGIC: BURROUGHS, MCKENNA, AND THE SYNTACTICAL NATURE OF REALITY Luke Goaman-Dodson
11:00	BREAK

CULTURAL MOVEMENTS

Chair: Andy Roberts

11:30	WHO GETS TO TELL THE STORY? ASSERTING PSYCHEDELIC AND SPIRITUAL NARRATIVES IN A MATERIALIST MEDIA HEGEMONY Giulio Sica
12:00	ON "OBJECT MANIPULATORS", PSYCHEDELIC FESTIVALS AND CONTEMPORARY YOUTH SOCIOPOLITICAL PARTICIPATION Swasti
12:30	PSYCHEDELICS & RESOLVING CLIMATE CHANGE & POVERTY FAST Nick Jankel-Elliot
13:00	LUNCH

PHILOSOPHY

Chair: Luke Williams

14:30	A MODEL OF PSYCHEDELIC HERESY Dave King
15:00	TO THINK FROM PSYCHEDELIC EXPERIENCE: PHILOSOPHICAL EXPLORATION OF PSYCHEDELIC EXPERIENCES EXEMPLIFIED ON THE MULTIPLE SELF THEORY Vit Pokorný
15:30	WHAT ARE THE IMPLICATIONS OF THE PSYCHEDELIC EXPERIENCE FOR PHILOSOPHY? Pieter Stokkink
16:00	THE JOURNEY SO FAR: THE ORIGIN OF MY BECOMINGS Matthew Strange
16:30	BREAK

PHILOSOPHY

Chair: Luke Williams

17:00	CONSCIOUSNESS EVERYWHERE? PSYCHEDELIC EXPERIENCE AND THE PHILOSOPHER'S MIND Sean Roche
17:30	ENTHEOGENS AND THE EMERGING INTERNET OF EVERYTHING Ian Kenway

NON-DRUG STATES PT.1

Chair: Cameron Adams

09:30	SUBJECTIVE EFFECTS OF HOLOTROPIC BREATHWORK AND PSYCHEDELICS: A COMPARISON Iker Puente
-------	--

10:00	THE DEVELOPMENT OF A HYBRID ECOLOGY FRAMEWORK FOR PSYCHEDELIC TECHNOLOGIES Carl H. Smith
-------	--

10:30	THE SWEAT LODGE Geoff Greentree
-------	---

11:00	BREAK
-------	--------------

NON-DRUG STATES PT.2

Chair: Cameron Adams

11:30	TARGETING THE ENDOCANNABINOID SYSTEM THROUGH OSTEOPATHIC MANUAL TREATMENT FOR THE MANAGEMENT OF EARLY/MIDDLE STAGES OF ALZHEIMER'S DISEASE Daniel Petkoff
-------	---

12:00	THE PSYCHEDELIC SCIENCE OF BART HUGES Joe Mellen
-------	--

12:30	HOLOTROPIC BREATHWORK: A NON-DRUG METHODOLOGY SUPPORTING PREPARATION, EXPERIENCE, AND INTEGRATION FOR WORK IN EXPANDED STATES OF CONSCIOUSNESS M. Murray & H. Harman
-------	--

13:00	LUNCH
-------	--------------

SPIRITUALITY PT.1

Chair: Kerry Rowberry

14:30	5-MEO-DMT, ENERGY, THE EGO, AND NONDUALITY Martin Ball
-------	--

15:00	PSYCHEDELICS IN THE ANTHROPOCENE Allan Badiner
-------	--

15:30	SACRED MEDICINE FOR A SECULAR CULTURE: HOW TO MAKE SPIRITUAL EXPERIENCE ACCESSIBLE Mark Waking Light
-------	--

16:00	PSILOHUASCA, THE RETURN OF THE MAGIC MUSHROOM Oliver Martin
-------	---

16:30	BREAK
-------	--------------

SPIRITUALITY PT.2

Chair: Kerry Rowberry

17:00	THE PSYCHEDELIC SHADOW Alexander Beiner
-------	---

17:30	ACID MEDIUMSHIP - GOOSE AND CROW John Constable
-------	---

INSTALLATIONS



Paul Friedlander: Exhibition in Estonia

Barry Hale - Threshold: Intraference

Intraference harnesses the chaos of simple video feedback loops or isolates the inherent noise within audio-visual equipment, amplifying and manipulating it to create coherent signal. The tiniest movements can lead to cascades of rapid change. The coherence is fragile, always in danger of collapse, but, with careful manipulation, the initial conditions of each AV set-up can lead to its own unique journey of morphogenesis, illustrating the space-time dynamics at work within chaos systems.

Luciana Hail

Dreamachine augmented with EEG installation, set in a darkened space with low bench seating in a circle (for 2 persons) They sit close either side of the Spinning Dreamachine, with eyes closed and Brainwaves monitored - to affect the sounds they hear fed back by headphones. The interactive, participatory artwork was first shown in The annual Kinetic Art Fair – a work in progress “Phrontesterion”: a symbiosis of Dreamachine Flicker and Hypnagogic & Hypnopompic feedback of participant’s EEG sonified, in an oil/air-pumped Dentist chair, floats back down, Reverie in Theta waves where time is lost – “I am that I am”... ?

Kira Zhigalina

«Symbiosis» – is an immersive interactive installation that visualizes breathing. The aim is to merge technology and art to create an organic experience that connects people on a primordial level, through bringing awareness to the connecting principle of breath. Two people at a time sit opposite each other with their breath taking a form of multicolour spirals that move from opposite directions of the tunnel. When the spirals meet they merge into one white light. The interaction stimulates another form of communication beyond language and inhibitions. Initiating a calm and expanded state of mind.

Paul Friedlander

Paul is a several-time winner of the Kinetic Art Organisation Prize, among other awards, whose unique light sculptures are the result of careful scientific design. He studied Physics and Maths at Sussex University, under the Nobel Laureate Anthony Leggett.

Discovery Dome

A four metre inflatable Discovery Dome with spherical mirror projection, screening 360-degree immersive psychedelic audio-visual planetarium shows throughout the weekend. Come join us inside the dome, on a bed of blankets and cushions, to peer up into a sky as deep as your imagination.

SPECIAL EVENTS



Breaking Convention Group Photo, 2013. Jonny Greet (www.dumdum.co.uk)

Book Launch: To Fathom Hell or Soar Angelic

Friday 18:30-22:00, Osmond Auditorium

To Fathom Hell or Soar Angelic is a new novel by Dr Ben Sessa. The novel follows the hapless life of Dr. Robert Austell, a conservative, every day jobbing psychiatrist who meets maverick Californian psychiatrist, Dr. Joseph Langley, accidentally discovers psychedelic psychiatry, breaks free of the medical model and bursts with technicolour explosion into the world of psychedelic research - taking on the Pharma industry and traditional medicine along the way. The Book Launch party is open to all at Breaking Convention. The author will be signing books and discussing the novel. He will be joined by Emma Watkinson, Visionary Artist who designed the book's cover and by Rob Dickins, publisher for Psychedelic Press UK. There will be music, visuals, nibbles and stuff like that. Everyone welcome!

Paul Friedlander Kinetic Light Show

Saturday 18:00, Osmond Auditorium

Paul is a physicist and light sculptor specialising in interactive, kinetic art pieces. He constructs both large scale and hand-held sculptures using vibrating strings and white light. Paul studied Physics and Maths at Sussex University under the Nobel Laureate Anthony Leggett.

Breaking Convention Group Photo

Saturday 13:00-13:30, on the stairs between King William Court and Queen Mary Court (postponed until Sunday 13:00 in the vent of bad weather)

Please join us for the Breaking Convention group photo, just east of King William Court at the top of the stairs. Nearly a thousand attendees meet under the blazing sun (we hope) to hurl hats and gerberas upwards in psychedelic unison. Photography by Jonny Greet.

Closing Ceremony with Don Santos

Sunday 18:30, on the lawn between King William Court and Queen Mary Court

Mara'akame Paritemai (Don Santos Lopez) is the former Governor of the Tateikie Huichol community (San Andres Cohamiata) North of Jalisco, Mexico. He spent 5 years as the leader of the Ceremonial Centre in San Jose Tesorero. Marakame Paritemai has over thirty years of experience as a medicine man and healer, and will be closing Breaking Convention with a group blessing.

09:00	YOGA & DANCE	The latest fashion in Yoga is yoga dance! Combining Yoga with fluid dance movement all to the sounds of live or recorded music. With this cool combination we are able to focus on the sensation of flow and to really align ourselves with the sound of the music, creating a sense of unity (Yoga) within ourselves and all around. www.EinatFreedomYoga.com
-	Einat Ran	
10:00		
10:00	COME OUT, COME OUT, WHEREVER YOU ARE!	An open discussion around the importance of raising awareness about the various potential benefits of responsible psychedelic use. We'll talk about how to accurately assess the risks that are associated with increased transparency, and how you can participate in a way that is appropriate for your lifestyle. Learn how to make a more cogent case in favor of supporting psychedelic research, how to frame our collective struggle for cognitive liberty as a human rights issue, and how personal testimony can help change the conversation.
-	The Teafaerie	
11:00		
11:00	BREAK	
11:30	SOMARA FESTIVAL	Somara- entheogenic plant medicine forum was a huge success and we will present an integrated digest and look at some deep issues about modern plant medicine ceremonies and use. Topics will span 'De-colonising the western mind', 'Psychological parasites and the possession debate', 'Neo- ceremonial duty of care and cultural appropriation', 'Acacia dreamtime invasion' and 'Money, sexuality and ceremonial sacrifice
-	Dan Schreiber, Victoria Sinclair & Ben Christie	
13:00		
13:00	LUNCH	
14:30	HYPNAGOGIC LIGHT MACHINES	Two hours of talk and discussion about the hypnagogic states produced by light machines. The session will feature neural functional connectivity research, therapeutic possibilities, and an introduction to the Lucia No.3 Light Machine.
-	Mat Harvey, Dirk Proeckl, Engelbert Winkler, Ashley Ward & Luciana Hail	
16:30		
16:30	BREAK	
17:00	NAVIGATING SPIRITUAL EXPERIENCE	This interactive session is an open invitation to share practical tips and techniques for navigating the realms of spiritual experience that are commonly encountered in psychedelic journeys. Illustrated through visionary art and poetry, this session presents a selection of practical techniques drawn from hypnotic, shamanic, yogic, and tantric practices.
-	Mark Waking Light	
18:00		
18:00	BREAK	
18:30	CYMAGICK	Cymagick describes a practice consisting of: study of Vibratory Phenomena, Mystical Experience & Creative Expression. Cymagick as a live performance with drone and electronic music crafted on the spot stimulating the cymatics (water, salt, chladni plates and other mediums).
-	Mark Wagner	
19:30		

09:00 - 10:00	CHI KUNG - Emma Ross	One hour Chi Kung class; the intention being to enter into a deep stillness, a standing meditation state. Chi Kung is an ancient practice with its roots in shamanism. Emma is a Chi Kung teacher and Craniosacral Therapist.
10:00 - 11:00	DREAMING, DRUMMING & DANCING - Christa McKinnon	This workshop will use the 'three D's of shamanism': dreaming, drumming and dancing, to lead participants into altered states of perception, undertaking a journey to access the 'wider field' and create bigger stories for themselves. It will focus on 'creation stories', asking the questions "Who am I?", "Where do I come from?" and "How do I fit in?".
BREAK		
11:30 - 13:00	PSYCHEDELICS & UNGASS - Jonas di Gregorio, Dario Giuffrida, Manuel Villaescusa, Teri Krebs, Rick Doblin & William Montgomery	The goal of this workshop is to unite those in favor of the right to use psychedelics and bring their voice at UNGASS 2016: the Special Session of the United Nations General Assembly on the World Drug Problem, that will take place next year in New York. The second part of the workshop will focus on practical tools that can be used to structure a grass-roots Cognitive Liberty Social Movement. www.Cognitive-Freedom.net
LUNCH		
13:30 - 16:30	REBIRTHING BREATHWORK - Sally Stonier & Chris D'Cruz 01227 832268 or 07967499660 sally@sacredenergy.co.uk www.sacredenergy.co.uk	In our Workshop you will experience a practical session or Rebirthing. This is a personal growth process that uses breathing as a central activity in increasing awareness and assisting us to anchor consciousness in the present moment. If you want to heal your past, to make peace with yourself, and to move forward in FREEDOM then Rebirthing Breathwork is definitely for you. - Connect consciously to presence. - Feel awakened within through expansion of awareness. - Open to your whole being and connecting to your intuition, creativity and inspiration. - Fully experience love, peace, joy and freedom, in all areas of your life.
BREAK		
16:30 - 18:00	PSYCHEDELIC SEX - Bernadette Martinez-Hernandez & Michael Ellsberg	Bernadette gives an introduction into Orgasmic Meditation (OM), a wellness practice (like Yoga and Pilates) that is designed to cultivate heightened awareness and connection in the lives of its practitioners. Michael presents "Sexy Psychodrama of the Absurd: Psychedelics & Sexual Healing in Lovership."

09:00 - 10:00	TAI CHI & THE UNSPEAKABLE - Andi Chapple	How do we talk about new experiences? A big question at BC, and a perennial one for this Chinese movement/martial art. We'll relax, use listening exercises to introduce open, accepting awareness, and then use movement to play with a quality of the body that may be new to you - nothing fancy, it just gets overlooked. As we go we'll explore the ways we try and talk about what we experience.
10:00 - 11:00	MEDITATION - Alexander Beiner & Ashleigh Murphy	Open Meditation will be guide you through some grounding meditations, exploring why mindfulness is so powerful in integrating a psychedelic experience. We'll draw on Open Meditation's TTI model (Trip, Train, Integrate) which can be read about in Neurotransmissions, and teach you some techniques that can be used during altered states.
BREAK		
11:30 - 13:00	SHAMANIC JOURNEYING - Will Rowlandson	In this 90-minute workshop, William briefly covers the ancient story of the drum and its role in altered states of consciousness. There are no pre-requisites, though a cushion or piece of clothing to rest the head whilst lying down is recommended, as is a set of eye-shades to enhance the inner vision. The workshop will feature two journeying sessions, with discussion and reflexion.
LUNCH		
14:30 - 16:00	SENSORY HERB POISONS - Fiona Heckles & Karen Lawton	The mysterious past of our native power plants calls to us somewhere deep within. Come and explore the exciting, medicinal and magical world of some of our native psychotropic plants. Seeped in political history, this is a chance to get up close and personal with the witching herbs.
16:00 - 16:30	OPEN MIND TRIPS - Amelliya Rosenberg	We dream of a future where entheogens are legal and available to us all. We have therefore created an online tool to help improve the information flow regarding the use of entheogens. This tool can help us reach our dream, yet it can only be done if we are willing to share experiences and information with each other. At this workshop we will focus on sharing ideas on how to work together as a community to reach a common goal.
BREAK		
17:00 - 17:30	SPIRITS READ FOUCAULT - Silvia Battista	This interactive performance invites participants to join and pursue questions on the relationship between spirituality and materiality, and the role of culture in defining their reciprocal boundaries. Participants are blindfolded and guided through visualisations, deeper and deeper, until the body is dismembered and nothing is left.

FILM FESTIVAL: ROEG'S GALLERY SATURDAY 11TH JULY

10:00	AYAHUASCA IN THE UK (60 mins) Director: Paul Bloom Year: 2015 Language: English	Ayahuasca has spread from the jungle into modern society and awareness of its therapeutic benefits are increasing. This film presents an intimate portrait of an Ayahuasca ceremony in the UK. The group share their experiences candidly and the healing powers of the medicine lead to intense and revealing personal journeys. Featuring scenes of the ceremony itself this presentation is a pre-premier of a work-in-progress with the director present.
11:00	WHO TOOK THE DRUGS? PSYCHEDELIC FILM (60 mins) Screentalk by Dr Mark Broughton	Despite a resurgence of interest in psychedelic art, psychedelia's place in the history of cinema has not been researched thoroughly and, likewise, film's contribution to psychedelia requires a lot more consideration. Emerging in the 1960s, psychedelic fiction films blended mainstream narrative forms and avant-garde strategies, sometimes utilising a character's consumption of LSD to motivate the 'smuggling' of avant-garde sequences into films produced by conservative studios. Psychedelia inflects cinematography and setting, so that narrative realism, psychological realism and abstraction are combined to form a radical new aesthetic.
12:00	B.F.I. PSYCHEDELIC SHORTS (32 mins) Director: Various. (Jeff Keen, Arthur Johns, Sensual Laboratory) Courtesy of BFI by kind permission.	In this 90-minute workshop, William briefly covers the ancient story of the drum and its role in altered states of consciousness. There are no pre-requisites, though a cushion or piece of clothing to rest the head whilst lying down is recommended, as is a set of eye-shades to enhance the inner vision. The workshop will feature two journeying sessions, with discussion and reflexion.
13:00	LUNCH	
14:30	TALKING WITH SPIRITS (93 mins) Plus Q&A with director, Michael Wiese. Director: Michael Wiese Year: 2012 Language: English	Talking with Spirits: Journeys to Balinese Spirit Worlds. In 1970 the young filmmaker Michael Wiese arrived in Bali and was taken to a remote village by a Balinese painting salesman. He became the first Westerner to live with the Balinese in this village and wanted to learn more about their elaborate rituals and ceremonies awash with spirits and powerful entities. After 40 years and many visits, little progress was made. Then, a breakthrough occurred. Bali yielded its secrets as trance dancers, mediums, shadow masters, priests and healers revealed the spiritual practices and portals to sacred dimensions. The result makes us question everything we know about the nature of reality, consciousness and the source of creativity and inspiration.
16:30	BREAK	
17:00	IBOGA NIGHTS (98 mins) Plus Q&A with director David Graham Scott Director: David Graham Scott Year: 2014 Language: English	David Graham Scott's 2004 film DETOX OR DIE documented how, with a single dose of iboga, he quit his drug addiction, inspiring others to do the same. Iboga has long been used in African religious ceremonies. Now the West promotes iboga for swift, painless withdrawal. Just how effective is iboga? In Holland David films addicts undergoing a long night of psychedelic detox, watched by an experienced iboga practitioner. One client collapses, ends up on life-support, and the provider is jailed. David begins to question the safety of iboga treatment. The film culminates with a nerve-wracking iboga session in London with the director himself administering the treatment! How does David justify involving himself so deeply in this controversial treatment? Is it the addict's perfect quick fix? Iboga Nights is an inspiring film journey that asks serious questions about drug addiction, its treatment in the UK and just how viable the alternative routes are.

10:00 **THE VOICE OF THE COFAN**
Presentation on the making of The Voice of the Cofan by Neil White

Director: Neil White
Year: 2015
Language: Spanish & Kofan (English subtitles)

An invitation to fall in love with the culture, traditional medicine and ancient story of the Cofan - the guardians of the rainforest. The Cofan can be found in the Putumayo region of southern Colombia and northern Ecuador. Over the past 500 years their ancestral territory has been gradually eroded and their communities continue to be at risk from oil drilling and further loss of land. The film highlights their way of life and in particular their use of Yage (Ayahuasca) as a medicine and a tool for the social orientation of their community.

11:00 **LAST OF THE PEYOTE GUARDIANS**
(120 mins)
Plus an Introduction by Don Santos, Mara'kame.

Director: Hernán Vilchez
Language: Spanish (English subtitles).

The urgent story of the mystical Wixarika People (Huichols) and their struggle against the Mexican government and multinational mining corporations to preserve Wirikuta, their most sacred territory and home of the famous peyote cactus. The recent mining activities of the Canadian companies threaten the delicate biodiversity of this unique ecosystem rich in silver, gold and other minerals. Their unequal and controversial fight triggers a global debate between ancient cultural values and the commercial exploitation of nature.

12:30 **B.F.I. PSYCHEDELIC SHORTS**
(32 mins)

Director: Various. (Jeff Keen, Arthur Johns, Sensual Laboratory)
All films appear courtesy of BFI, by kind permission.

As the '60s progressed and the cultural shift saw more empowerment for a younger generation, underground filmmakers found greater support for their work. A range of short experimental films funded by the British Film Institute over this period illustrate the filmmaker's quest to represent the experiences associated with altered states, most particularly the delirium induced by a media-saturated environment, but also including hallucinogenic drugs (particularly LSD) and the music and art which evoked such experiences.

JEFF KEEN TRILOGY
(Marvo Movie 4:28 , Cineblatz 3:00, White Lite 3:00) (1967-8)
Jeff Keen (1923-2012) was a pioneer of experimental film whose rapid-fire animations, multiple screen projections and raucous performances redefined multimedia art in Britain.

SOLAR FLARES BURN FOR YOU (Arthur Johns, 1973) 8:26
Road movie or acid trip? Throbbing to a hypnotic soundtrack by Soft Machine's Robert Wyatt, our journey starts in London into an industry-scarred countryside made magical with day-glo pink skies, tangerine fields and acid-yellow roads. The British landscape has rarely looked more extraordinary.

BEYOND IMAGE (Sensual Laboratory, 1969) 13:50
Beyond Image perfectly evokes the spirit of the legendary underground club, the UFO, initially in London's Tottenham Court Road, where hip young things mixed with scene celebs like Mick Jagger and John Lennon to watch bands like The Soft Machine (whose music soundtracks this film) accompanied by ultravivid light shows, by the likes of Mark Boyle and Joan Hills, who created this film.

13:00

LUNCH

14:30 THE ACID TAPES

(10 mins)

Plus a discussion with Dr Robin Carhart Harris and Dr Ben Sessa.

15:00 THE SILENT STORM

(98 mins)

Plus a Q&A with director, Corinna McFarlane.

Director: Corinna McFarlane

Cast: Damian Lewis, Andrea Riseborough, Kate Dickie

Language: English.

On a wild and remote Scottish island, the respected local minister, Balor, fights to keep his disappearing community together. His beautiful, enigmatic wife Aislin is more in tune with nature than she is with her husband or the villagers. It's clear she doesn't belong here and is treated as a total outsider. A storm is raging inside their marriage.

Trailer: https://www.youtube.com/watch?v=f0DomtDAy18&feature=youtu.be&list=UUA19BQesA_r2ftXnN-3kllw

16:30

BREAK

17:00 THE MIRROR OF THE SPIRIT

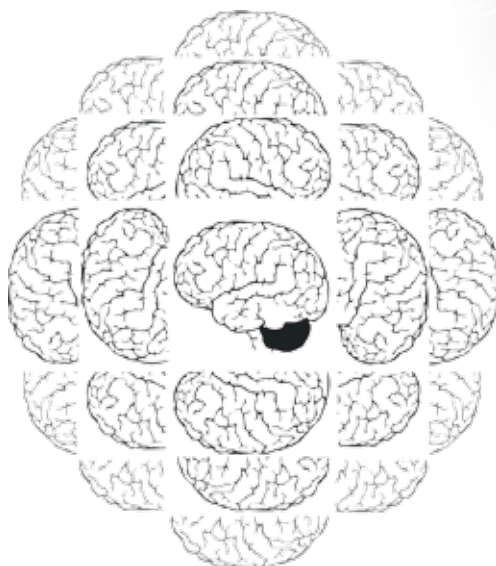
(87 mins)

Director: João Meirinhos

Year: 2014

Language: Spanish & English (English subtitles).

A compelling and sublime documentary that reaffirms the power of the world's greatest traditional medicine, ayahuasca. Assembling an impressive cast of traditional practitioners, aficionados and western converts, 'Mirror of the Spirit' bubbles like the brew itself to reveal the essence of the ayahuasca experience. And, like the ayahuasca vine, it entwines the viewer with an authentic and compelling message that is hard to resist. Grounded in strong ethnographic roots, 'Mirror of the Spirit' captures the spirit of this eclectic mix of contributors all of whom have been transformed by the power of the medicine in a myriad different ways.



LUKE BROWN

Art is a materialisation in the third dimension of a sacred liturgy, an alchemical ritual in which consciousness is explicating itself in-form and time. His visionary art simultaneously reflects and catalytically effects an expansion of consciousness throughout the underlying field of the collective unconscious. In being in-formed by and creatively translating the deeper transpersonal energies that are pulsing through him into a communicable language, Luke taps into forms that exist in the formless, synchronic, archetypal dimension of consciousness itself. He originates from Toronto, but currently resides in Bali.

PASCAL FERRY

Pascal is a French self-taught artist visionary painter and has had a lifelong interest in everything visionary and mystical. His publishing company, 'Sidh & Banshees' has represented a large group of international visionary artists from 2000 to 2014. Today Pascal Ferry is solely focusing on his personal art, creating his new style of visionary landscape paintings which represent his internal journeys in search of lost civilizations and their spiritual connection. Pascal Ferry lives and works in Brittany, in close proximity to the magic Neolithic Stone Circles. "As an artist I've always envisioned myself metaphorically removing the dust off the ancient sacred sites, stones and mysteries with my paintbrush."

STUART GRIGGS

Stuart Griggs is an artist of the imagination. Multidimensional spaces and symbols weave together to explore and manifest the primordial and the transpersonal, resonating with a profound sense of awareness of our unity and interconnection. He works with interior narrative, symbol and intention as a way to visually portray the divine form. His work explores the nexus of drawing and digital art, synthesising the two approaches into an idiosyncratic visual language. It is a journey into the creative process that immerses and probes into the psychic pool of collective archetypes.

MARTINA HOFFMANN

Martina is a central figure in contemporary visionary art. Her paintings offer the viewer a detailed glimpse into her inner landscapes - imagery that has been inspired by expanded states of consciousness. The Visionary Realism of Martina Hoffmann is decidedly feminine and places the 'Universal Woman' in an intimate cosmos. She transcribes her ecstatic experiences but also her subtle reflections on the nature of women in a realistic style which marries the fantastic to the sacred. Hoffmann's work has been exhibited, collected and published internationally.

"Your images show an artistry in painting that suffices to produce amazement and admiration for which words fail me."

Dr. Albert Hofmann

KATIA HONOUR

Katia is an entheo-oriented visionary artist and frequent panelist and presenter at major Australian psychedelic events. She is currently completing a Masters of Fine Art thesis titled "Mysticism, Madness and Medicine: Representing the phenomena of altered states of consciousness as an oscillation between theological, psychological and psychedelic perspectives". She unites international training in esoteric practices from Spiritualism, Magick, Tantra and Shamanism to her 5 years artistic training within the lineages of Ernst Fuchs and Salvador Dali. Her paintings emphasise Light and Beauty and have become recognised within the global visionary art culture for their unique and sincere approach to spirituality, Light and Beauty.

ANDROID JONES

Android Jones began studying art at age 8. He graduated from Lyons High and went on to Ringling School of Art and Design in Sarasota FL, where he trained in traditional academic drawing/painting and animation. After working as an artist for Nintendo, he founded Massive Black, a concept art company based in LA. In 2005, Android began his career as an Independent Artist. He is a pioneer of digital painting and projection art, continually pushing the edges of humans, technology, and art. He has projected on the Sydney Opera House and worked as a commissioned artist for the Royal Family of Abu Dhabi. A long time member of the Burning Man community, Android has traveled the world exhibiting his work and participated in festivals on 6 continents.

MARK LEE

Time-traveling mystic dreaming agent of the emergent timeline of Shambala. While having a series of lucid dreams and psychedelic adventures, Mark travelled to the west coast of Canada and down to Peru in search of meaning and a tribe. He found it and so much more. Now many years later he lives between Bali and China developing prototyping creative pipelines of virtual design and engineering using bioenergetic concepts and technology, 3D printing and moulding/casting processes to invent resonant devices, housing structures and food systems.

YVONNE MCGILLIVRAY

Much of her work shows the interrelationship of humanity with the plant, animal & spirit realms. Ancient primal magic blends with vibrant new frequencies. The paintings show a deep reverence for the magic & mystery of creation and the interconnectedness of all life. Images are intuitively channeled directly onto the canvas, connecting us to the sacred ways of nature, spirit, truth, healing & beauty.

DANIEL MIRANTE

Daniel Mirante is a painter and writer whose work is influenced by ceremonial work within indigenous cultures and mystical lineages. "I am driven," the artist says, "to create icons that honor the deep ecology, and principles that express our union with nature and the sacred as one continuum, unbroken." In 2012 Daniel worked closely with the Master painter of Sacred and Visionary Art, Ernst Fuchs in Vienna, Austria. A strong believer in the importance of art education through practical experience, Daniel Mirante entered the foundation of The Vienna Academy of Visionary Art where he has instructed in painting and symbolism, teaching along-side seminal artists and scholars in the revival of sacred art.

LIBA W STAMBOLLION

Liba has been an artist and designer for 25 years. She paints, writes, makes books and designs furniture. Ecology, erotica and the sacred are the recurrent themes in her work. She is intimately involved with various arts organisations. In 2012 she started Dreams and Divinities, a project which unites International artists through a series of books, events and exhibits in prestigious sites, galleries and museums around the world. Liba has done over 50 fine art exhibits in both galleries and museums internationally. Her paintings, designs, books and interviews have been featured on television, documentaries, in over a dozen books and over 100 articles.

LUIS TAMANI

Luis is a Peruvian artist from the Amazonian rain forest. He studied in the Art school of his native city, Eduardo Meza Saravia. Through connecting with the Sacred Medicine of his ancestors, Luis started painting his visions. Today, his art represents the fusion between Man and the Vegetal and Animal kingdoms. He is astonished front of this deep relationship that Man can develop with plants and animals; what makes Man as a unique Being, a Medicine Man. He presents, through his paintings, his vision of Life: We all come from the One and we are all coming back.

ROBERT VENOSA

Robert Venosa (1936 – 2011) is one of 'Fantastic Realism's' outstanding masters. His art has been exhibited worldwide and is represented in major collections, including those of noted museums, rock stars and European aristocracy. In addition to painting, sculpting and film design - pre sketches and conceptual design for the movie Dune, and Fire in the Sky for Paramount Pictures, and Race for Atlantis for IMAX - Venosa enjoyed computer art as part of his creative menu. His paintings are also featured in numerous publications - and on a number of CD covers, including those of Santana, Kitaro, Ornette Coleman, et al. Throughout his artistic career Venosa worked closely with the great masters of the Fantastic and Surreal, Mati Klarwein, Ernst Fuchs and Salvador Dali.

EMMA WATKINSON

Emma has traveled the world exploring different cultures. She resonates with Druidry, Buddhism & a Kabbalistic Esoteric path. Her intention is to create images opening portals in the psyche, raising consciousness. She meditates with mythic archetypes, listening to spirit for guidance, & ayahuasca is a core ally in her journey. Born with a physical disability, she uses psychedelics as a healing tool. Assisted Fantastic Realist Ernst Fuchs in Vienna and exhibited widely including BOOM, Burning Man U.S., Glastonbury, Elixir of Life U.K., Rainbow Serpent & Fantastic Museum & Gallerie, Vienna.

JUDITH WAY

Judith Way is an artist, poet, writer and teacher. She shares creative inspiration through the forms of the written and spoken word, image making through oil painting, and through the practice of teaching art, sacred dance and yoga. Inspired by the transhistorical lineage of symbolic masters, in writing and image making, she writes and speaks about the restoration of culture and spirituality through the creative imagination.

GLEU YEW

Gleu Yew was born in Araguaia-Tocantins, a place where the Cerrado Brazilian Savanna ends and the Amazon rain forest begins. Through her creativity and experimentation Gleu is engaging with her deeper self, channelling internal emotional states, a process of release and of seeking greater inner freedom. This inner drive of self-exploration, in combination with insights from altered states of consciousness, is the inspiring force behind her work. The present work has arisen out of Gleu's attempts of finding expression and meaning during a dark period of depression. Producing this work has been her way of bringing herself back into the light.

PERFORMANCES

HOFMANN HALL		SABINA STAGE	
THE HAPPY ONES		MESSAGE FROM THE EARTH: SHIPIBO ICAROS & PURE SOUND	
FRIDAY LUNCH 13:00-14:00	<p>BY RIDUCULUSMUS THEATRE</p> <p>The Happy Ones is the second in a trilogy of work that highlights innovative uses of dialogue as a means of treating mental health. Developed in collaboration with Ben Sessa and Michael Mithoefer who are pioneering the therapeutic uses of psychedelics. Veterans of wars in Iraq and Afghanistan who participated in these trials have been talking to us about the efficacy of the treatment and their struggles with the ethical ambiguities of combat.</p> <p>Written, Directed & Performed by Jon Haynes & David Woods. Developed with support from The Wellcome Trust and Arts Council England. Duration 70 mins. No interval.</p>	<p>BY RICHARD DOWN</p> <p>Richard Down, medicine shaman performs live Shipibo incantations and icaro - the use of sonido - pure sound to effect healing and vision and also gives an explanation of the song; "I sing the plant spirit songs given by Ayahuasca, queen of master plant spirits - her message from the earth is one of love. She cleans and clears and restores the subtle energy body - the chakras - through the songs given to the shaman. We can sing these songs without medicine given and they are highly effective.</p>	
SIMULACRUM		TRIBAL FUSION BELLY DANCE	
SATURDAY LUNCH 13:00-14:00	<p>BY KIMATICA</p> <p>Kimatica Studio, is a London-based multidisciplinary platform working at the intersection of the human body, fashion and technology. It emerged in 2010 from the passion for research, experimentation and expression within the realms of visual media, art and design.</p>	<p>BY EINAT RAN</p> <p>Tribal Fusion Belly Dance is A Powerful and hypnotizing fusion of Belly-dance, Flamenco, Indian dance and Hop-Hop. Its about Exploring your own feminine movement and connect to the divine feminine within and without. This dance is a celebration of womanhood for all ages and sizes.</p>	
PERFORMANCE SHOWCASE		DIV SHIR (SABBATIC DANCE)	
SUNDAY LUNCH 13:00-14:00	<p>BY THEARMED909</p> <p>A creative collective of wise, wicked and wonderful women and fine brown-haired gentlemen, somehow intE.R.twined and synchronized and willing to fully participate in this crazy little thing that we call life and this very spectacular experimental performative demonstration starring Big Skin, Ms V Allan, Raga Woods, My Bad Sister(s), Lady Gonzalez, and bEar+baRnesIT. Ritual show for one hour only.</p>	<p>BY ALKISTIS DIMECH</p> <p>Div Shir evolved out of movement research based on a study of Olmec sculptures of the shaman in transformation pose, and the possibilities of the human body to alter consciousness through movement and form. The title refers to a statue, commonly known as the Guennol Lioness, in whom the feline and human are fused, just as we find with the Olmec were-jaguars. The Lioness forms emerged during research in the studio and in the field, as my body sought a feminine incarnation of power, parallel to the male Olmec shaman figures. Both relate to the hunt, its terrain the space the dance inscribes and evokes. The performance is a rite of passage from human to divine animal, a being in which the erotic and sanguinary are compounded and who we encounter on the threshold.</p>	

EVENING ENTERTAINMENTS – NITES OF ELEUSIS

MAIN ROOM - 'The Magick Theatre'

	FRIDAY, 10TH JULY	SATURDAY, 11TH JULY	SUNDAY, 12TH JULY 'SUBMISSION SUNDAY'
19:00 - 20:00	CYMAGICK Mark Wagner	ENGLISH HERETIC	TRIM TAB JIM PERFORM 'THE BALLAD OF CASEY HARDISON'
19:30 - 20:15			SAM & THE PLANTS
20:15 - 21:00			NESSI GOMES + DUNCAN BRIDGEMAN (1 Giant Leap)
20:00 - 21:00	GNOD-KHOM The Eleusinian Mysteries	THE ASTERISM	
21:00 - 22:00			TAU with EINAT & SHABASH
21:00 - 22:30	SOCCER 96 feat light show by innerstrings	SCULPTURE	
22:00 - FINNISH			LUXOR (DJ SET)
22:30 - 01:30	ANTHONY CHALMERS (DJ SET)	ANDY VOTEL (DJ SET)	

ROOM 2 - 'The Parallel Dimension'

FRIDAY and SATURDAY **PRIMITIVES: a live interactive and immersive installation by SPATIAL**

PLUS... OUTSIDE IN THE COURTYARD...

Projection Mapping installation from MOREEYES

Many more performances, light shows and installations and an additional space across the weekend to be announced soon!

With performances from the TRAVELERS OF THE STARS AND VOID, and further acts TBA.

INVITED SPEAKER BIOS



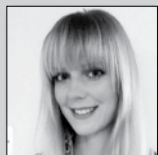
CAMERON ADAMS

Cameron Adams is a director and co-organiser of Breaking Convention. He is a medical and cognitive anthropologist who has conducted long term ethnographic research with the Highland Maya of Chiapas as well as with online communities of psychedelic users. He also teaches science at an alternative curriculum pupil referral unit, and does learning mentor outreach at mainstream secondary schools.



CHIARA BALDINI

Chiara Baldini is an independent researcher from Italy. Her work explores how altered states of consciousness have been embedded in different rituals over the course of Western history, particularly in ancient Greece and Rome. She wrote "Dionysus Returns: Contemporary Tuscan Trancers and Euripides' The Bacchae" featured in *The Local Scenes and Global Culture of Psytrance* (Routledge, 2010) and she co-authored with Graham St. John "Dancing at the Crossroads of Consciousness: Techno-Mysticism, Visionary Arts and Portugal's Boom Festival" for the Brill's Handbook of New Religions and Cultural Production (2012). She participated to Breaking Convention 2013 with a presentation on the "Political outcomes of ecstatic practices: the case of the Bacchanals Affair in ancient Rome." In 2014 she curated the program of Boom Festival's cultural area, the Liminal Village, with particular attention to theme of the Feminine. She currently lives in Portugal.



MELISSA BONE

Dr. Melissa Bone has recently obtained her PhD in Law at the University of Manchester. Her thesis explores how human rights can provide a new perspective on drug control and it points towards different ways of regulating drug consumption. She teaches on the Law school's Drugs and Society module, and has presented her research at a variety of academic and practitioner focused conferences, including the House of Lords. Melissa is especially interested in how the human rights regime can facilitate broader conceptualisations of religion and health to more adequately reflect the complexities of human drug use. Her most recent publications centre upon the religious rights of the Rastafari to consume cannabis and on the health rights of medicinal cannabis consumers.



LUKE BROWN

Luke Brown's art is a materialisation in the third dimension of a sacred liturgy, an alchemical ritual in which consciousness is explicating itself in-form and time. His visionary art simultaneously reflects and catalytically affects an expansion of consciousness throughout the underlying field of the collective unconscious. In being in-formed by and creatively translating the deeper transpersonal energies that are pulsing through him into a communicable language, Luke taps into forms that exist in the formless, synchronic, archetypal dimension of consciousness itself. He originates from Toronto Canada, but currently resides in Bali, Indonesia.



ROBIN CARHART-HARRIS

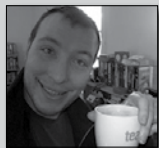
Robin has a degree in Psychology, MA in Psychoanalysis and PhD in the field of Psychopharmacology. He moved to Imperial College London in 2009, where he has worked for the last 6 years on the brain effects of LSD, psilocybin (magic mushrooms) and MDMA, conducting some of the first brain imaging studies of these drugs. Most recently he has been running a clinical trial looking at the potential of psilocybin to treat depression.



VAL CURRAN

Val Curran is Director of UCL's Clinical Psychopharmacology Unit, Professor of Psychopharmacology and Research Lead at Camden & Islington's Drug Services. She is a founding member of Drug Science. Her research is funded by the Medical Research Council and other bodies and includes a current clinical trial to treat cannabis dependence and brain imaging studies contrasting the neural and psychological effects of skunk as opposed to more balanced cannabis. Her research spans a wide range of drugs which act on the brain and are used medically and/or for recreational purposes. Recent talks (2014) on cannabis have been to the European Parliament, the Danish independent state of Christiania and the University of Cambridge. Recent media appearances include the two Channel 4 Drugs Live programmes – The Ecstasy Trial and The Cannabis Trial.

INVITED SPEAKER BIOS



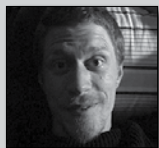
CYRIAK

Cyriak Harris is an English freelance animator better known by his first name Cyriak. On 3 December 2009 Cyriak was announced as the winner of the 2009 E4 E Stings competition. His work also resulted in a short BBC South East news interview in November 2006. The video "DeadEnders" was commissioned by the BBC as a sequel to Cyriak's earlier "BeastEnders". Based on the British soap opera EastEnders, it explored the idea of all the Eastenders characters who had died over the years rising from the grave and embarking on a "brain-eating zombie rampage". Both films were featured on the BBC Three comedy series Comedy Shuffle.



ALICIA DANFORTH

Alicia Danforth, PhD, is the co-investigator for a current MAPS-sponsored phase 2 pilot study looking at the effect of MDMA-assisted therapy on social anxiety in autistic adults. She began her work in clinical research with psychedelic medicines with Dr. Charles Grob at the Los Angeles Biomedical Research Institute, Harbor-UCLA Medical Center in 2004. In 2013, Danforth graduated from the Institute of Transpersonal Psychology (ITP) with a Ph.D. in clinical psychology, with a specialization in Transpersonal Research and Education. Her dissertation was on the MDMA (Ecstasy) experiences of autistic adults. At ITP, she co-developed and co-taught with James Fadiman and David Lukoff the first graduate-level course on psychedelic theory, research, and clinical considerations for therapists and researchers in training.



ROB DICKINS

Robert Dickins is the Editorial Director of the Psychedelic Press. A published author, writer, and poet, Robert's research centres around the role of psychedelics in literature. His postgraduate research, in the medical humanities and undertaken with the University of Exeter, examined how certain LSD-using psychiatric approaches in the 1950s and 1960s gave rise to certain forms in literature.



RICK DOBLIN

Benjamin is the Founder and Executive Director of the International Center for Ethnobotanical Education, Research and Service (ICEERS). He is also the Director, producer and composer of the documentary 'Ibogaine-Rite of Passage' (2004). After making this documentary, his interest in ibogaine leads him to further study this ethnobotanical and found ICEERS in 2009, with the objective to integrate ayahuasca and iboga as therapeutic tools in occidental society. He has given many lectures and screenings and formation in various specialized courses about Ibogaine. In 2012 the documentary 'Experience BWIT: Renaissance of the Healed' was released and he is developing a new documentary about the therapeutic potential of ayahuasca. Since 2012, Benjamin also serves GITA (Global Ibogaine Therapist Alliance) as member of the board of directors.



AMANDA FEILDING

Amanda Feilding is the Director and founder of the Beckley Foundation, a charity based in heart the Oxfordshire countryside that researches consciousness from an interdisciplinary perspective. It investigates how psychoactive substances work, why people use them, and what is the best way for society to control and integrate their inevitable presence. The Foundation has initiated pioneering research in both the scientific and policy fields, conducting breakthrough research into LSD, psilocybin and cannabis. The aim of the BF's Drug Policy Programme is to work towards a rational system of regulation which minimises the harms to the health of the individual and society while recognising personal freedoms, and optimising potential benefits to health and well-being. The BF Press recently published Cannabis Policy: Moving Beyond Stalemate, Hofmann's Elixir: LSD and the New Eleusis, and the Pharmacology of LSD.



ANDREW FELDMÁR

Andrew Feldmár is a psychologist who has worked as a psychotherapist in private practice, in Vancouver, for 45 years now. He first experimented with altered states of consciousness in 1967. He has been trained and supervised in LSD therapy by R. D. Laing in London, England. He studied the anthropology of shamanism with Francis Huxley. He also worked with Stan Grof at the Esalen Institute in California, and did volunteer work at Hollywood Hospital in New Westminster, Canada, when LSD was still legally used there in 1969/70. Recently, he has been involved in a research study, sponsored by MAPS to show the efficacy of MDMA as an adjunct to psychotherapy with severe cases of PTSD.

INVITED SPEAKER BIOS



ROBERT FORTE

Robert Forte, AMRS, is an independent scholar, writer, and editor, who studied the history and psychology of religion at the University of Chicago Divinity School. He is the editor of *Entheogens and the Future of Religion*; *Timothy Leary: Outside Looking In*, and the twentieth anniversary edition of *The Road to Eleusis*, by R. G. Wasson, Albert Hofmann, and Carl A. P. Ruck. He is currently a faculty member of the California Institute of Integral Studies, Transformative Studies. He served on the board of directors of the Albert Hofmann Foundation and has been president of the Church of the Awakening since 1985.



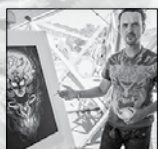
ANDREW GALLIMORE

Andrew Gallimore is a neurobiologist, pharmacologist, and chemist currently based at the Okinawa Institute of Science and Technology. He has been interested in the neural basis of psychedelic drug action for many years and is the author of a number of articles on DMT and the psychedelic state, including *Building Alien Worlds* (2013), in which he developed a new model of DMT's effects on neural function and its relationship to human neuroevolution. He is currently collaborating with Dr. David Luke and Dr. Rick Strassman to perform the first detailed phenomenological analysis of the subjective reports of the sixty volunteers in Strassman's landmark human DMT study. It is hoped that this work will further our understanding of the ontological significance of the astonishing psychoactive effects of this unique psychedelic.



ROLAND GRIFFITHS

Roland is Professor in the Departments of Psychiatry and Neurosciences at the Johns Hopkins University School of Medicine. His principal research focus in both clinical and preclinical laboratories has been on the behavioral and subjective effects of mood-altering drugs. His research has been largely supported by grants from the National Institute on Health and he is author of over 350 journal articles and book chapters. He has been a consultant to the National Institutes of Health, and to numerous pharmaceutical companies in the development of new psychotropic drugs.



STUART GRIGGS

Stuart is an artist of the imaginal. He works with interior narrative, symbol and intention as a way to visually portray the numinous. His work is an exploration into the nexus of drawing and digital art, synthesising the two approaches into an idiosyncratic visual language. It is a journey into the creative process that immerses & probes into the psychic pool of collective archetypes. Multidimensional spaces & symbols weave together to explore and manifest the primordial & the transpersonal, resonating with a profound sense of awareness of our unity & interconnection. Themes of sacred divinity, fertility, ritual, flow, transcendence & healing are synergising through the imagery as I allow a tacit sense of the numinous to unfold and transmit.



LUMÍR HANUŠ

Prof. Lumír Hanuš is Professor of Medicinal Chemistry and Natural Products at the Hebrew University of Jerusalem. He holds doctoral degrees in Pharmaceutical Chemistry and Natural Sciences, and has been awarded the 2005 Hanuš Medal of the Czech Chemical Society, the National Award of the Czech Government and the 2010 Jack Herer Award for Outstanding Hemp Awareness in the field of Medicine. Prof. Hanuš is a world expert on the endocannabinoid system and isolated the first known endocannabinoid neurotransmitter, anandamide. He studied under the father of cannabis chemistry, Raphael Mechoulam, who identified tetrahydrocannabinol (THC).



KAT HARRISON

Kathleen (Kat) Harrison is an ethnobotanist who loves to explore the relationship between plants, mushrooms and human beings—particularly in the realms that are often hidden: cultural beliefs, personification of species, rituals of healing and initiation, vision-seeking modalities, and artistic creations that illustrate the plant-human relationship. She also studies and teaches the deep history of humans in nature, encompassing both before and since the advent of agriculture. Kathleen founded *Botanical Dimensions* in 1985, with her then-husband, the late Terence McKenna, who retired from BD in 1992. Kat has been the President and Project Director throughout BD's history, and continues to actively manage both ongoing and new projects.



MICHAEL HEINRICH

Prof. Michael Heinrich is Head and Professor at the Centre for Pharmacognosy and Phytotherapy, UCL School of Pharmacy, London. He is a pharmaceutical biologist, pharmacognosist and anthropologist, with many years of research experience in a multitude of generally transdisciplinary aspects of medicinal and food plant research (esp. bioactive natural products), as well as at the interface of cultural and natural sciences especially on the traditional use of food and medicinal plants for example in Mexico and the Mediterranean.

INVITED SPEAKER BIOS



MARTINA HOFFMANN

Martina works as a painter and sculptress and is a central figure in contemporary Visionary Art. Her paintings offer the viewer a detailed glimpse into her inner landscapes – imagery that has been inspired by expanded states of consciousness: the realms of the imagination, meditation, shamanic journeys and the dream state, with the Sacred feminine as a central theme. The Visionary Realism of Martina Hoffmann is decidedly feminine and places the 'Universal Woman' in an intimate cosmos. She transcribes her ecstatic experiences but also her subtle reflections on the nature of women in a realistic style which marries the fantastic to the sacred. With a new global sensitivity dominated by the nature of love, Martina Hoffmann has evolved towards a true depth of human thinking, a humanism without concession towards universal consciousness



JACK HUNTER

Jack Hunter is a doctoral candidate in the Department of Archaeology and Anthropology at the University of Bristol, and a Visiting Lecturer in the Department of Theology and Religious Studies at the University of Chester. His research takes the form of an ethnographic study of contemporary trance and physical mediumship in Bristol, focusing on themes of personhood, performance, altered states of consciousness and anomalous experience. In 2010 he established *Paranthropology: Journal of Anthropological Approaches to the Paranormal* (www.paranthropology.co.uk), as a means to promote an interdisciplinary dialogue on issues relating to paranormal beliefs, experiences and phenomena. He is the author of *Why People Believe in Spirits, Gods and Magic* (2012), editor of *Paranthropology: Anthropological Approaches to the Paranormal* (2012) and *Strange Dimensions: A Paranthropology Anthology* (2015), and co-editor with Dr. David Luke of *Talking With the Spirits: Ethnographies from Between the Worlds* (2014).



MATTHEW JOHNSON

Matthew W. Johnson, Ph.D., is Associate Professor of Psychiatry at Johns Hopkins University School of Medicine. For 18 years he has conducted research in psychopharmacology and addictions, and for >10 years he has conducted human research with psychedelics. He has published >50 journal articles and chapters, and has been awarded >5 million dollars as principal investigator in the study of addictions from the US National Institutes of Health. Dr. Johnson received the 2011 Young Psychopharmacologist Award from the American Psychological Association, and the 2014 Federation of Associations in Behavioral & Brain Sciences Early Career Impact Award. Dr. Johnson has been interviewed about the effects of drugs by CNN's Wolf Blitzer Show, NPR's Morning Edition, NPR's Kojo Nnamdi Show, the New York Times, and the Washington Post. His research is broadly focused on behavior change, including addiction and its treatment.



DAVE KING

Dave is the co-founder of Breaking Convention and the UKC Psychedelics Society. He represented the Beckley Foundation at a House of Lords seminar in 2011, and directed the 2012 Shulgin Blotter Art Fundraiser, which generated \$21,000 for Sasha Shulgin's medical care. He is the lead editor of the upcoming book *Neurotransmissions: Essays on Psychedelics*, and was a co-editor of *Breaking Convention: Essays on Psychedelics*. He self-published *A Short Introduction to Psychedelics* in 2008, currently undergoing editorial revision prior to print with Scriptor Press. He worked at the National University of Singapore Medical School for two years, conducting translational human immunology research on CMV and T-cell senescence.



TERI KREBS

Teri is the board leader of EmmaSofia (www.EmmaSofia.org), a non-profit organization based in Oslo, Norway, working to protect the human rights of people who use psychedelics and working to increase access to quality-controlled MDMA and psychedelics. Teri has been funded by the Research Council of Norway to study MDMA and psychedelics at the Norwegian University of Science and Technology. Teri has co-authored a meta-analysis of randomized controlled trials of LSD for alcoholism, showing a sustained beneficial effect following a single dose of LSD, two large population studies of mental health in people who have used psychedelics, showing that psychedelic use does not appear to increase risk of mental health problems, and a neurobiological rationale for using MDMA to augment exposure therapy for anxiety disorders. Her research has been featured in Nature News, BBC World News, and many other media sources. In April 2015 Teri published a letter in *Lancet Psychiatry*: "Protecting the human rights of people who use psychedelics".

INVITED SPEAKER BIOS



DANNY KUSHLICK

Danny founded Transform Drug Policy Foundation in 1997, after working in a variety of jobs in the drugs field. It was his clients' experience that led him to the understanding that prohibition is a social policy catastrophe. He worked for Bristol Drugs Project, the Big Issue Foundation, Bath Area Drugs Advisory Service and the National Association for the Care and Resettlement of Offenders (NACRO). He is now an internationally recognised commentator on drug and drug policy issues.



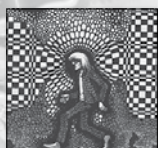
CARA LAVAN

Cara made documentaries for TV from 2000 - 2008 whilst becoming increasingly fed up with the poor representation of drugs and drug users in the mainstream media. In 2008 she set up the Know Drugs project with the intention of 'bringing honesty into the conversation about drugs'. She filmed interviews with judges, politicians, recreational drug users, medics, psychologists, drug addicts, prohibitionists and non-drug users for the project and organised a groundbreaking conference on Envisioning a Post Prohibition World in 2011. She is co-ordinating the filming and editing of all 120 talks at 2015's Breaking Convention and will also be speaking in the Drug Policy Session.



TOM LLOYD

Tom Lloyd QPM MA (Oxon) is an International Drug Policy Adviser and former Chief Constable. His experience in the UK and the many countries he has visited around the world has led him to the conclusion that drug prohibition is a hugely costly, counter-productive and harmful failure. He advocates a graduated control and regulation system for all drugs



PETE LOVEDAY

Pete Loveday is a British underground cartoonist. He drew many comics charting the adventures of hippie character Russell including Big Bang Comics, Big Trip Travel Agency, Plain Rapper Comix printed by AK Press. His style has been compared to Robert Crumb or Gilbert Shelton with lots of cross-hatching. Big Bang Comics is Britain's most successful underground comics. Recurring themes are drugs, rock festivals, and environmentalism. Plain Rapper Comix #2 is Loveday's pamphlet in comic book form on a history of hemp and why it would be beneficial for the environment to replace tree paper with hemp paper and he practices what he preaches by being the first publication in modern times to be printed on such paper.



ANNA LUKE

Anna Luke is a writer living in London. She was educated at Oxford University, RADA, The University of London and various jungles and deserts in central and South America. Her fiction has been translated into 10 languages. As of autumn 2015 she is a visiting fellow at the University of Essex where she will lecture on Rebecca Solnit and the Politics of Uncertainty.



DAVID LUKE

David is Senior Lecturer in Psychology at the University of Greenwich where he teaches the Psychology of Exceptional Human Experience. He was President of the Parapsychological Association between 2009-2011 and has published more than 100 academic papers on the intersection of transpersonal experiences, anomalous phenomena and altered states of consciousness. He has co-authored/co-edited four books on psychedelics and paranormal experience, directs the Ecology, Cosmos and Consciousness salon at the institute of Ecotechnics, and co-founded Breaking Convention.



RUPERT MCSHANE

Rupert is a Consultant Psychiatrist and Principle Investigator in the Department of Psychiatry, Oxford University. He is interested in dementia and in treatment-resistant depression, and leads the Clinical Dementia Network of the Oxford Academic Health Science Network, which covers Berkshire, Buckinghamshire, Oxfordshire, Milton Keynes and Bedfordshire. The possibility that ketamine infusions could be given in routine NHS ECT suites to patients with treatment resistant depression is the focus of an NIHR funded study led by Rupert. He is also collaborating with colleagues from Department of Primary Care Health Sciences to explore the range of experiences of people receiving ECT and to create a 'Healthtalkonline' module for ECT.

INVITED SPEAKER BIOS



FRIEDERIKE MECKEL-FISCHER

For a period of about 10 years, Friederike worked with approximately 100 persons underground using MDMA, LSD, 2CB and psilocybin for psychointegrative healing work. She was then betrayed by a client, arrested, put under trial and ultimately sentenced of violating the narcotics act in 2010, yet not her clients, which allows Friederike paradoxically enough to openly speak about her experiences and findings.



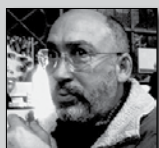
DANIEL MIRANTE

British artist Daniel Mirante is a gifted painter, teacher and writer who shares a wealth of insights into the artist's craft and its relationship to the sacred. His interest in visionary and sacred art was and continues to be strongly influenced by intensive ceremonial work within indigenous cultures and mystical lineages, including indigenous traditions of the Americas, Dzogchen teachings, and through exploring the archeology of ideas of Western Consciousness, such as Gnosticism and Hermeticism. Understanding working with symbols as a dynamic language of spiritual enquiry, he developed a passionate interest in painting in 2002, and sought instruction in 2004 from Brigid Marlin, a venerable teacher in the lineage of Ernst Fuchs. A teacher at the Visions in the Mischtechnik Seminars with Amanda Sage and Laurence Caruana, author of *The First Manifesto of Visionary Art*, in 2012 he worked as assistant to Ernst Fuchs, and is a founder of the Vienna Academy of Visionary Art. Currently residing in Devon, UK, Daniel currently focusses on grass roots art education, writing, painting and storytelling.



CELIA MORGAN

Celia is the Director of the Centre for Neuropsychopharmacology and Senior Lecturer in Psychology at the University of Exeter, with a primary interest in the effects of drugs and alcohol on the brain and behaviour. Her research has concentrated on examining both the positive and negative effects of recreational drugs on cognition. Through behavioural and neuroimaging studies, Celia has investigated the chronic effects of relatively new substances such as ketamine, MDMA and mephedrone. Her work also has focused on what makes individuals vulnerable to the harmful effects of certain substances, like cannabis. Celia completed her undergraduate degree and Ph.D at UCL, spent some time at Yale University on a scholarship programme, before returning to UCL for a post-doc. Following this she worked at University of Melbourne as a visiting research fellow and returned to UCL for a fellowship and then Lectureship. She holds a Visiting Readership at University College London.



JONATHAN NEWMAN

Dr. Jonathan Newman's is a social anthropologist who research includes the the borders between legal and illegal economies. His previous work has looked at the impacts of the drug trade on Colombian coffee farming. Publications include analysis of: the current Colombian peace negotiations; psychosocial resilience; and educational markets. Since Jonathan's presentation at 2013 Breaking Convention (on the Medical Cannabis Bike Tour) he has been looking at the drug reform movement speaking to activists as well as politicians and NGOs at parliamentary seminars. One of the issues that his work seeks to address is how to breach the gulf between drug policy makers and drug producers. Jonathan is currently writing up work on the European cannabis industry during a time of policy reform. The research is carried out as participant observation, attending cannabis trade shows while taking various cannabis products that members of industry recommend.



DAVID NICHOLS

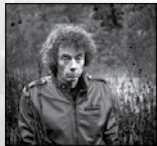
David E. Nichols is an American pharmacologist, medicinal chemist and the founding president of the Heffter Research Institute. Previously the Robert C. and Charlotte P. Anderson Distinguished Chair in Pharmacology at Purdue University, Nichols has worked in the field of psychoactive drugs since 1969. While still a graduate student, he patented the method that is used to make the optical isomers of hallucinogenic amphetamines. His contributions include the synthesis and reporting of mescaline, LSZ, 6-APB and several others, as well as the coining of the term "entactogen". In 2004 he was named the Irwin H. Page Lecturer by the International Serotonin Club, and delivered an address in Portugal titled, "35 years studying psychedelics: what a long strange trip it's been." Among pharmacologists, he is considered to be one of the world's top experts on psychedelics. Nichols's other professional activities include teaching medicinal chemistry and molecular pharmacology at Purdue University in West Lafayette, IN, and teaching medical students at the Indiana University School of Medicine.

INVITED SPEAKER BIOS



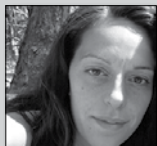
DAVID NUTT

David Nutt is currently the Edmund J Safra Professor of Neuropsychopharmacology and Head of the Centre for Neuropsychopharmacology in the Division of Brain Science, Dept of Medicine, Hammersmith Hospital, Imperial College London. He is President of the European Brain Council and Chair of the Independent Scientific Committee on Drugs (ISCD) and Past-President of the British Neuroscience Association. In addition he is a Fellow of the Royal Colleges of Physicians, of Psychiatrists and of the Academy of Medical Sciences. He is also the UK Director of the European Certificate and Masters in Affective Disorders Courses and a member of the International Centre for Science in Drug Policy. He has edited the Journal of Psychopharmacology for over fifteen years and acts as the psychiatry drugs advisor to the British National Formulary. He has published over 400 original research papers, a similar number of reviews and books chapters, eight government reports on drugs and 27 books including one for the general public *Drugs without the hot air*, which won the Transmission book prize in 2014.



JONATHAN OTT

Jonathan Ott is an ethnobotanist, writer, translator, publisher, natural products chemist and botanical researcher in the area of entheogens and their cultural and historical uses, and one of a group of researchers who coined the term “entheogen”. Ott has written eight books, co-written five, and contributed to four others, and published many articles in the field of entheogens. He has collaborated with other researchers like Christian Rätsch, Jochen Gartz, and the late ethnomycologist R. Gordon Wasson. He translated Albert Hofmann’s 1979 book *LSD: My Problem Child* (LSD: Mein Sorgenkind), and *On Aztec Botanical Names* by Blas Pablo Reko, into English. He is a co-editor of *Eleusis: Journal of Psychoactive Plants & Compounds*, along with Giorgio Samorini.



MARIA PAPANPYROU

Maria is a BACP accredited counsellor and psychotherapist. She has worked as a therapist for 13 years, in the fields of mental health and education, alongside her private practice. She has also been contributing to forums like Breaking Convention, Burning Man, and Boom Festival, supporting the re-introduction of psychedelic agents in psychotherapy. Entheogens and Healing have been major reference points of interest for many years. In *Psychedelic Science* the two are able to join and she explores the sacramental and healing properties of entheogens, and how these can foster development and the growth of human and societal tacit potential.



TORSTEN PASSIE

Torsten is Assistant Professor for Clinical Psychiatry and Psychotherapy at Hannover Medical School and currently Visiting Professor at Harvard. For more than twenty years he has been conducting research on the use of hallucinogenic drugs, altered states of consciousness and shamanic practices in psychotherapy and healing. He studied philosophy, sociology (M.A.) at Hannover University and medicine at Hannover Medical School. His medical dissertation was on existential psychiatry. His psychotherapeutic education was in psychoanalysis and psycholytic therapy. He has done extensive research on the psychophysiology of altered states of consciousness and their healing potential, including clinical research with different induction procedures including hallucinogenic drugs (cannabis, ketamine, nitrous oxide, and psilocybin). He is also an experienced addiction therapist and researcher, and the chief physician of the German model-project of heroin-assisted treatment for opiate addicts.



DANIELA PELUSO

Daniela Peluso is a sociocultural anthropologist whose research interests range from Amazonian to corporate environments. Her writing brings together divergent and similar aspects of the ‘exotic’ and ordinary, global and local for a contemporary understanding of and approach toward social anthropology. She has worked in Amazonia for several decades, particularly around issues of gender, indigenous urbanisation and land rights. She is a senior lecturer in social anthropology at the University of Kent.



DALE PENDELL

Poet Dale Pendell is the author of the award-winning *Pharmako* trilogy, a literary history of psychoactive plants. His poetry is widely anthologized, most recently in *The Wisdom Book of American Buddhist Poetry*. Dale was the founding editor of *Kuksu: Journal of Backcountry Writing*. In addition to writing, Dale has directed herbal product development, conducted botanical surveys, and worked as a computer scientist for Adobe Systems. Recent books are *Walking with Nobby: Conversations with Norman O. Brown*; *The Language of Bird: Notes on Chance and Divination*; and *The Great Bay: Chronicles of the Collapse*, a novel. *Seeking Faust*, a play, was published last fall by Scarlet Imprint, U.K. Dale and his wife Laura and a familiar cat live in the foothills of the Sierra in California. Their performance group, *Oracular Madness*, has been known to appear at Burning Man.

INVITED SPEAKER BIOS



DANIEL PINCHBECK

Daniel is the author of *Breaking Open the Head* (Broadway Books, 2002), 2012: *The Return of Quetzalcoatl* (Tarcher/Penguin, 2006), and *Notes from the Edge Times* (Tarcher/Penguin, 2010). In the 1990s, Daniel co-founded and co-edited the literary journal *Open City*, with Thomas Bel-ler and Robert Bingham. At various times, he has been a regular columnist for *Art & Antiques*, *The Art Newspaper* of London, *Arthur*, *Conscious Choice*, and *Dazed & Confused*. In 2007, he launched the web magazine *Reality Sandwich* and co-founded *Evolver.net* with Ken Jordan, Michael Robinson, and Talat Phillips. *Evolver* currently includes *Evolver Learning Labs*, our web-inar platform, and *The Evolver Network*, their nonprofit initiative. They have also produced a publishing imprint, *Evolver Editions*, in collaboration with North Atlantic Books. Daniel's life and work were featured in the documentary 2012: *Time for Change*, directed by Joao Amorim and produced by Mangusta Films.



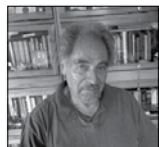
ALAN PIPER

Alan Piper was born in 1953 and graduated as a mature student in 1986 in the History of Ideas at Kingston University (Surrey). As well as the history of scientific, philosophical, religious and political ideas, his studies included the practice of historical method. Since graduating he has sought to apply the disciplines learned as an undergraduate to the history of esoteric thought and the role of mind altering plant drugs in the history of human culture. Last year at *Breaking Convention* Alan presented on 'Psychedelics, Fascism and the Politics of Profane Illumination'. Published papers include 'The Mysterious Origins of the Word "Marihuana"' in the series *Sino-Platonic Papers*, 'Gabriele Rossetti and the Secret History of Europe' and 'Leo Perutz and the Mys-tery of St Peter's Snow', which concerns an Austrian novel from 1933 whose narrative contains a mysteriously detailed prediction of the discovery of LSD.



WILLIAM ROWLANDSON

William Rowlandson is Senior Lecturer in Hispanic Studies at the University of Kent. William's teaching and research interests have focused on two broad themes: the tension between art and politics with particular attention to the Cuban Revolution, and religious and mystical ex-perience. Whilst he has published books and articles concerning Borges and mysticism and the mystical-poetical vision of Cuban poet José Lezama Lima, he has also published and presented on slavery, torture, the War on Terror and the history of Guantánamo. He has recently published with the Swedenborg Society *Imaginal Landscapes*, a personal account of exploring the mystical literature of Swedenborg and Borges, and he is currently working on a book about European and US writers' interest in the Cuban Revolution in the late 1950s and 1960s.



CARL RUCK

Carl A.P. Ruck is Professor of Classics at Boston University, an authority on the ecstatic rituals of the god Dionysus. With the ethno-mycologist R. Gordon Wasson and Albert Hofmann, he identi-fied the secret psychoactive ingredient in the visionary potion that was drunk by the initiates at the Eleusinian Mystery. In *Persephone's Quest: Entheogens and the Origins of Religion*, he proclaimed the centrality of psychoactive sacraments at the very beginnings of religion, em-ploying the neologism "entheogen" to free the topic from the pejorative connotations for words like drug or hallucinogen.



CHRIS SALWAY

Chris is a consultant psychiatrist who has worked in general adult psychiatry in the NHS for the past 15 years. He also works one afternoon per week as a visiting psychiatrist at a drug and alcohol rehabilitation unit. Prior to training in psychiatry, Chris trained and worked as a GP. He deals with a wide range of psychiatric conditions but his particular interests are psychosis and substance misuse. Chris is concerned, as are other psychiatrists, at the growth of psychiatric con-ditions described and the over-use of psychotropic drugs.



DAVID GRAHAM SCOTT

David Graham Scott is a documentary maker from the highlands of Scotland. His highly au-thored films are unique visions of the world he inhabits and the offbeat characters he encoun-ters. His films have aired across the BBC at both local (BBC Scotland) and national (network) level. Addiction has been one of the areas David has had personal experience of in the past and has rigorously documented through several broadcast films such as the BAFTA nominated *Little Criminals*, Celtic Media Festival nominated *WireBurners*, and New York Film Festivals winner *Detox or Die*. His recently completed feature film *Iboga Nights* leads on from the award-winning BBC documentary *Detox or Die*. *Iboga Nights* was voted Best UK documentary at the Open City Docs Fest in London (2014).

INVITED SPEAKER BIOS



BEN SESSA

Ben is a Consultant Pediatric Psychiatrist and Senior Research Associate at the University of Bristol. Ben is one of the five co-founders of Breaking Convention and the author of several novels and non-fiction books, including 'The Psychedelic Renaissance'. He is coordinating Britain's first study to treat Post Traumatic Stress Disorder with MDMA-assisted psychotherapy. He began publishing in medical journals on the subject of psychedelics as a trainee and since then has spoken nationally and internationally to doctors in a campaign to see these fascinating substances return to the mainstream pharmacopeia where their lives began. In 2008 he became a Research Associate under Prof. David Nutt at Bristol University, where he consulted for the ACMD on MDMA before working on the UK's only human hallucinogen study in modern times – being the first person to be legally administered a classical psychedelic drug in this country for 33 years.



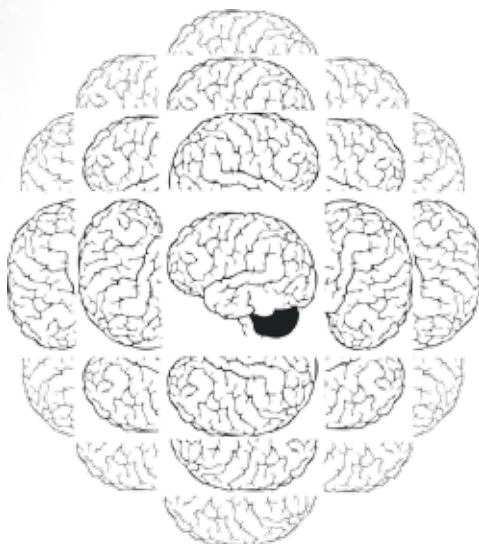
AIMEE TOLLAN

Aimée is an Anthropology graduate from the University of Kent. She first became interested in psychedelics and altered states of consciousness after joining the University of Kent Psychedelics Society and attending the first Breaking Convention in 2011. Her undergraduate dissertation explored how drug policy, the media and the general public's attitudes towards illicit substances influence each other. She has written further articles about this for Open Democracy and has spoken at Sunrise Festival and at Breaking Convention in 2013. She is an advocate for drug policy reform and is an anti-prohibitionist, and would like to further explore how drug policy impacts upon psychedelic drug use and research. Now a co-chair of Breaking Convention, Aimée is inspired by the current psychedelic renaissance and is hopeful for its positive longevity.



SIMON WELLS

Simon Wells is the author of nine books and has written for numerous magazines and newspapers including The Guardian; The Times and The Independent. He is a regular contributor to Empire, Record Collector, Hotdog, TV Zone, Watch, Total Film, and The Beatles' Book, the group's official magazine. In addition, Simon has researched projects for the likes of the BBC, Channel Four, C5, Discovery Channel and Virgin Media, as well as broadcasting live on LBC, ITN and the BBC on film and music. He is the author of "Coming Down Fast", an exhaustive account of the Charles Manson "family" saga, published in 2009. Other notable books include The Beatles: 365 Days, The Rolling Stones: 365 Days, Your Face Here- British Cult Movies Since the 1960, and Butterfly on a Wheel.



The Beckley Foundation

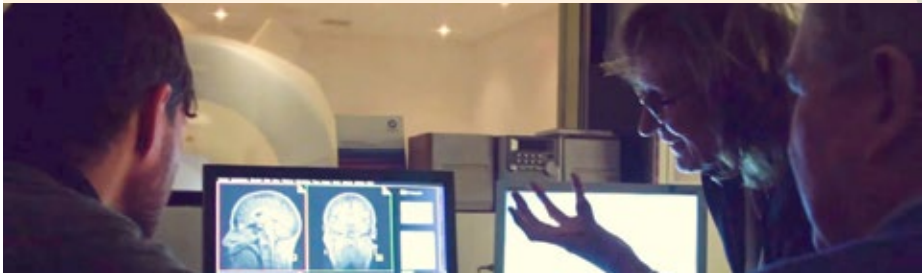
The Beckley Foundation is unique in combining pioneering science and policy research to improve health, and international drug policy.

The **Beckley Foundation** is a UK-based think-tank and research centre that, since its creation by Amanda Feilding in 1998, has been at the forefront of global drug policy reform and scientific research into the potential medical benefits of psychoactive substances, such as cannabis and the psychedelics.

The Foundation's **Scientific Programme** uses the latest developments in neuroscience and brain imaging to explore how psychoactive substances act upon the human brain, in order to increase our understanding of consciousness, and to open up new avenues of treatment for humanity's many illnesses. Amanda initiates, helps design and carries out research in collaboration with scientists

around the world. She co-directs with David Nutt the **Beckley / Imperial Psychedelic Research Programme**, which carries out groundbreaking research with psilocybin, MDMA, and is now concluding the first brain imaging study ever to be done with LSD and human participants.

The Beckley Foundation's **Policy Programme** collaborates with a worldwide network of leading experts in conducting research, promoting debate, publishing reports, organising international seminars, advising governments and building the scientific evidence base on which to develop policies of **regulation** that are health orientated, harm reducing and respect human rights.



Pioneering Research

Over the past 17 years, Amanda Feilding has co-developed over 30 scientific research projects on consciousness, psychoactive substances and their therapeutic and cognitive effects. Current brain imaging and clinical studies include:

- LSD & Creativity investigations
- Psilocybin as a treatment for depression
- Ayahuasca, investigating neuroplasticity, etc.
- MDMA as a treatment for PTSD in war veterans
- Cannabis: effects of THC & balanced THC/CBD
- LSD: overcoming alcohol addiction

Changing Minds

Currently with a team of leading global experts we are developing two Reports: 1) *Regulation of Cannabis, Psychedelics, MDMA and NPS*; 2) The first ever report to approach the *Regulation of Coca, Cocaine and Derivatives*. Amanda suggested to undertake this challenging report to President Molina of Guatemala, who had invited her to advise him on drug policy reform. She is also working with the government of Jamaica, who are decriminalising and regulating cannabis use and production.

✉ : Beckley Park, Oxford OX3 9SY, United Kingdom.
☎ : +44 (0) 1865 351 209 | 🌐 : www.beckleyfoundation.org | 📄 : [/TheBeckleyFoundation](https://TheBeckleyFoundation) | 🐦 : @BeckleyResearch

SPONSORS

The Temple of the Way of Light is a pioneering plant spirit medicine healing centre located in the Peruvian Amazon Rainforest offering intensive ayahuasca retreats with female and male Shipibo healers.



Dedicated to providing our guests the opportunity to benefit from the ancient healing wisdom of the Shipibo people, and to helping this unique culture to preserve its knowledge and identity in the 21st Century.

Working with some of the most respected, kind-hearted and powerful healers (Onanya) from the Shipibo tribe who bring time honored rituals, intricate practices, an encyclopedic knowledge of medicinal plants of the Amazon and a far reaching lineage to the healing process.

The Main Pillars of Our Work Are:



“ The age old healing traditions of the Shipibo people offer an ancient yet pioneering path to health, re-discovering our true nature and catalyzing a return to wholeness. ”

- Highly Skilled Male and Female Shipibo Healers
- Compassionate, Caring and Safe Environment
- High Ratio of Healers to Guests
- High Number of Ceremonies
- Stringent Health and Safety Standards
- Interfacing Progressive Therapeutic and Eastern Integrative Practices with Amazonian Shamanism
- Comprehensive Aftercare and Integration Support
- Total Social Responsibility
- Reciprocity and Outreach in the Amazon
- Community, Permaculture and Sustainable Living
- Supporting Independent Scientific Research Studies

For more information about our ayahuasca retreats, please visit:

www.TempleoftheWayofLight.org

SPONSORS



Rachel Hope
Subject in MAPS' MDMA/PTSD research



Michael & Annie Mithoefer
MDMA/PTSD co-therapists



Nicholas Blackston
Subject in MAPS' MDMA/PTSD research

Founded in 1986, MAPS is a non-profit organization that sponsors FDA-regulated research into the beneficial uses of psychedelics and marijuana, and also engages in public education and psychedelic harm reduction.



We need your donations to develop MDMA-assisted psychotherapy into an FDA-approved prescription treatment by 2021, initially for people suffering from chronic PTSD and then many other clinical indications.



MAPS

MULTIDISCIPLINARY ASSOCIATION FOR PSYCHEDELIC STUDIES

LEARN MORE & DONATE
[MAPS.ORG](https://maps.org)

SPONSORS

Volcano[®] MEDIC

Official medical cannabinoid Vaporizer,
certified as a medical device



www.vapormed.com



VAPORMED GMBH & CO. KG · Rote Strasse 1 · 78532 Tuttlingen/Germany
tel. +49-7461-96589-50 · fax +49-7461-96589-48 · info@vapormed.com

For further information visit:

www.vapormed.com



officially approved
medical device



**Vinyl
Revolution**

www.vinylrevolution.co.uk

**Custom Decals
Macbook Stickers**

**Calling all
VISIONARY ARTISTS**

**make your own designs
and help us spread the
revolution**

Wall Art



Molecular Structure Decals of

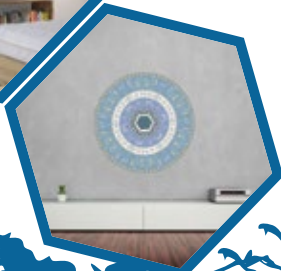
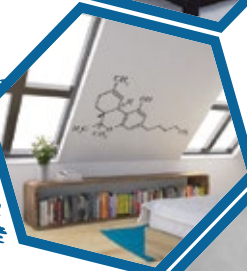
MDMA

LSD

THC

available now at the

Visionary Art Stall





The British
Psychological Society
Promoting excellence in psychology

Psychedelics, Psychology and Spirituality

18-20 September 2015
19th Annual Transpersonal Psychology Section Conference
Cober Hill, Cloughton, Scarborough

Keynotes:

Matthew W. Johnson, Ph.D.

The Johns Hopkins University School of Medicine, Baltimore, USA
"Psilocybin and Mystical Experience: Effects on Cancer-Related Anxiety & Depression, Meditation, and Addiction"

Professor David Nutt

Imperial College, London
"Psychedelic psychotherapy – a renaissance from brain imaging studies?"

David Luke, Ph.D.

University of Greenwich, UK
"The varieties of psychedelic experience: Mapping transpersonal psychopharmacology"

Torsten Passie, M.D., Ph.D.

Assistant Professor for Consciousness Studies, Hannover Medical School, Germany.
"Experiences of patients treated with LSD for existential anxiety related to a life-threatening illness."

Call for Papers

Submissions are invited on any relevant topic within the field of Transpersonal Psychology in the forms of papers, experiential workshops or posters. The deadline for submissions is 25 July 2015.



Artwork by: Edward Foster

For submissions and further particulars please see:
www.kc-jones.co.uk/transpersonal2015

SPONSORS - MEDIA PARTNERS

WITH THANKS TO OUR
SPONSORS



VAPORMED GMBH & CO. KG



AND
PARTNERS



THE
PSYCHEDELIC SOCIETY



ACKNOWLEDGEMENTS

Almost a quarter of the Breaking Convention audience are involved in the running of the conference, either on the extended organising committee, as speakers, as artists, as contributors, as workshop leaders or as volunteers. This enormous collaborative effort is what makes Breaking Convention such a special event. With the exception of a few generous sponsorships, the conference is funded entirely by ticket sales, so we thank each and every one of you for helping make this happen. Any profit is dispensed to psychedelic research organisations or channelled back into Breaking Convention projects such as our biennial anthology of psychedelic essays. You will all find a copy of our latest book, *Neurotransmissions*, free in your welcome pack.

The core team of directors volunteer thousands of hours between them over a 12month period of conference planning. This year, the central crew have been assisted by an incredibly enthusiastic and hardworking extended committee, to whom we are eternally grateful. In particular, we thank David Fuller for acting as our press officer; Ashleigh Murphy and Alexander Beiner for their skills and efforts managing sponsorships; Stuart Griggs for taking command of our Visionary Art Gallery; Adam Malone and Stuart Heaney for heading up our Entertainment programme; Paul Bloom and Mark Broughton for their contributions to the Film Festival; Nikki Wyrd, Lara MackieBland and Julian Vayne for directing our small army of volunteers; Andy Roberts for designing and managing our merchandise; Rob Dickins for his tremendous work with PsyPress UK, including his editorial management of the Breaking Convention poetry anthology, *The Tripping Spriggan*; Hattie Wells for her involvement in social media; Maria Papaspyrou for organising and chairing the Femtheogens session; and Cara Lavan for the gargantuan task of arranging the filming and editing of almost 150 presentations.

Sponsors of the event include Amanda Feilding and the Beckley Foundation the leading UK psychedelic research organisation; Rick Doblin and the Multidisciplinary Association for Psychedelic Studies without whom we would not have this renaissance of psychedelic science; Storz & Bickel the leading manufacturers of medical marijuana equipment; the Temple of the Way of Light a trusted Shipibo shamanic healing centre in Peru; Isomer Design, who kindly sponsored the travel costs of David Nichols; and Paul "Monkey" Guest at BlotterArt.com, who has been very generous in his support of the conference since 2011 (you can thank him for your blotterart name badge). We also thank Kalliopi Tavoulari for her kind sponsorship of Jonathan Ott.

We are indebted to the University of Greenwich for hosting Breaking Convention, and their help in arranging onsite accommodation. The British Film Institute deserve many thanks for their gracious contributions to the Breaking Convention Film Festival. We would also like to thank the International Society for Academic Research on Shamanism (ISARS), the Psychedelic Society, the International Center for Ethnobotanical Education, Research and Science (ISEERS), the Heffter Research Institute, Stichting Open, the UKC Psychedelics Society, the Ecology, Cosmos & Consciousness series, and all other organisations who have helped us in our media campaigns.

ACKNOWLEDGEMENTS

Other invaluable contributors to Breaking Convention include Giorgos Mitropapas for designing this programme booklet; Jonny Greet for his stellar photography at the event; Mark Pilkington and Emerald Moseley for their work on Neurotransmissions; Petra Kiviniema and Jon Atkinson for helping upload files to our new online Video Gallery; Putney Helm for her help arranging cartloads of flowers for the group photo; and Nina Bosanac for her many suggestions concerning web design.

Special mention goes to all our performers and installation operators, including Kimatica, Jane McMorrow, Alkistas Dimech, Einat Ran, Karen Barnes, Richard Down, Ben Mudge, Raga Woods James Mannion, Mark Pilkinton, Barry Hale, Luciana Hall, Kira Zhigalina, Dirk Proeckl and Engelbert Winkler. Thanks also to our various musicians, workshop leaders, artists and film crew.

Finally, we are enormously thankful for the great band of volunteers who give up their time throughout the weekend to make sure BC15 runs smoothly: Susanna Lafond, Salgó Péter, Tim Horan, Monika Wieliczko, Annalisa Ventola, Star Brewer, Meike Imberg, Emil Schlosser, Giuseppe Paese, James Livermore, John Geoffrey Morris, Filippos Anagnostopoulos, Andy Lockwood, Gregg Hermetech, V, Rachel Baldwin, Mourad Wahba, Daniel Toneri, Johnny Ryan, Britta Cesare, Neil White, Sara Gazi, Steliana Yanakieva, Georgia Roach, Chrissie Wilson, Will McCutcheon, Andi Chapple, Bankole Osibote, Emma Ross, Petra Kiviniemi, Nadia Violet Erlam, Elanor Dennison, Frances Ellis, Johanna Sopanen, Gabriela Dworecki Domingues, Neil Young, Frances, Peter Mastin, Santtu Heikkinen, and many others. Further thanks goes to our film crew: Alyssa Joye, Christine Alford, Luca Piercey, Anton-Jari Desai-Paulden, Francesca Harris, Skanda Gopal, and others.

See you all again in two years at Breaking Convention 2017. Remember there are plenty of opportunities to get involved. We thank you so much for coming along and being there to witness it all without the support and interest of the psychedelic community, the conference could never be a success.

Yours,



Dave



Aimee



Dave



Ben



Cameron

UNIVERSITY MAP

Greenwich Campus

- 1** East Gate Entrance
● Security & Information
- 2** Queen Anne Court
- 3** Queen Mary Court
- 4** King William Court
● Main Conference Site

- 5** University Bookshop
- 6** West Gate Entrance
- 7** Dreadnought Building
- 8** Stephen Lawrence Building
- 9** Devonport House

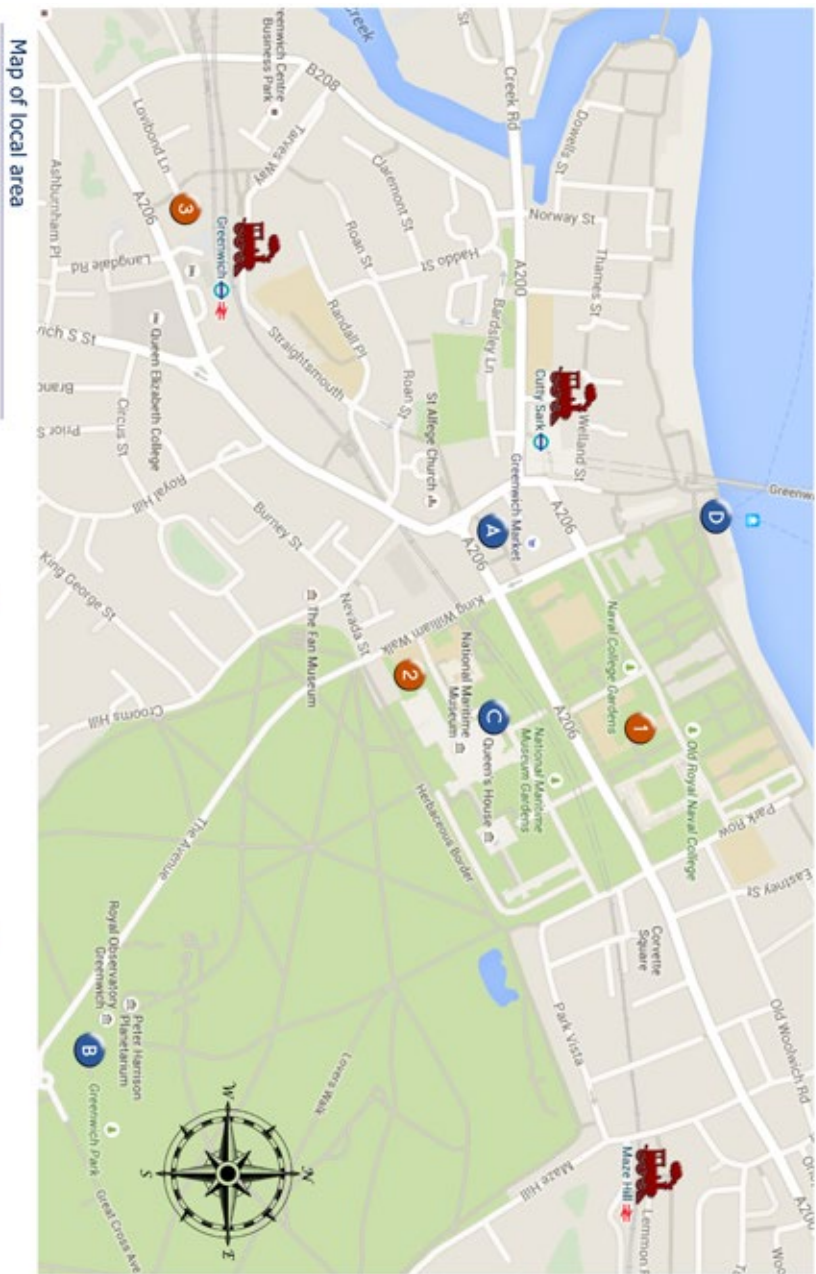
- 10** Cooper Building
● Bar Latitude
Nixes of Elocads (Evening Entertainments)
- 11** Stockwell Street
- 12** Curty Sark Hall

-  Docklands Light Railway: please visit www.tfl.gov.uk/dlr for the latest information
-  Bus Stops: please visit www.tfl.gov.uk/buses for the latest information
-  Bus Stop (university bus service - Midway)

-  Bus Stop (university bus service - Avery Hill)
-  Public Parking
-  Disabled Parking
-  Brompton Dock (bike hire)
-  Restaurant/Café



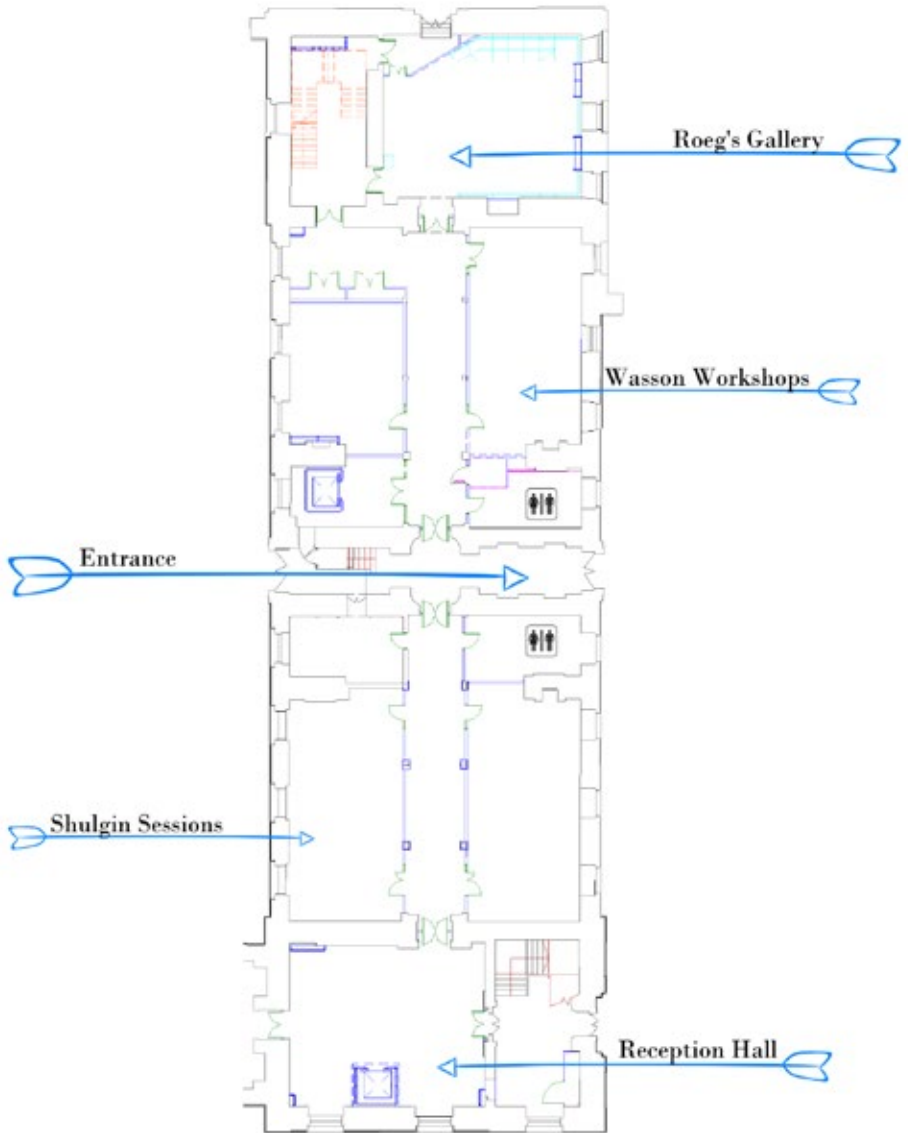
AREA MAP



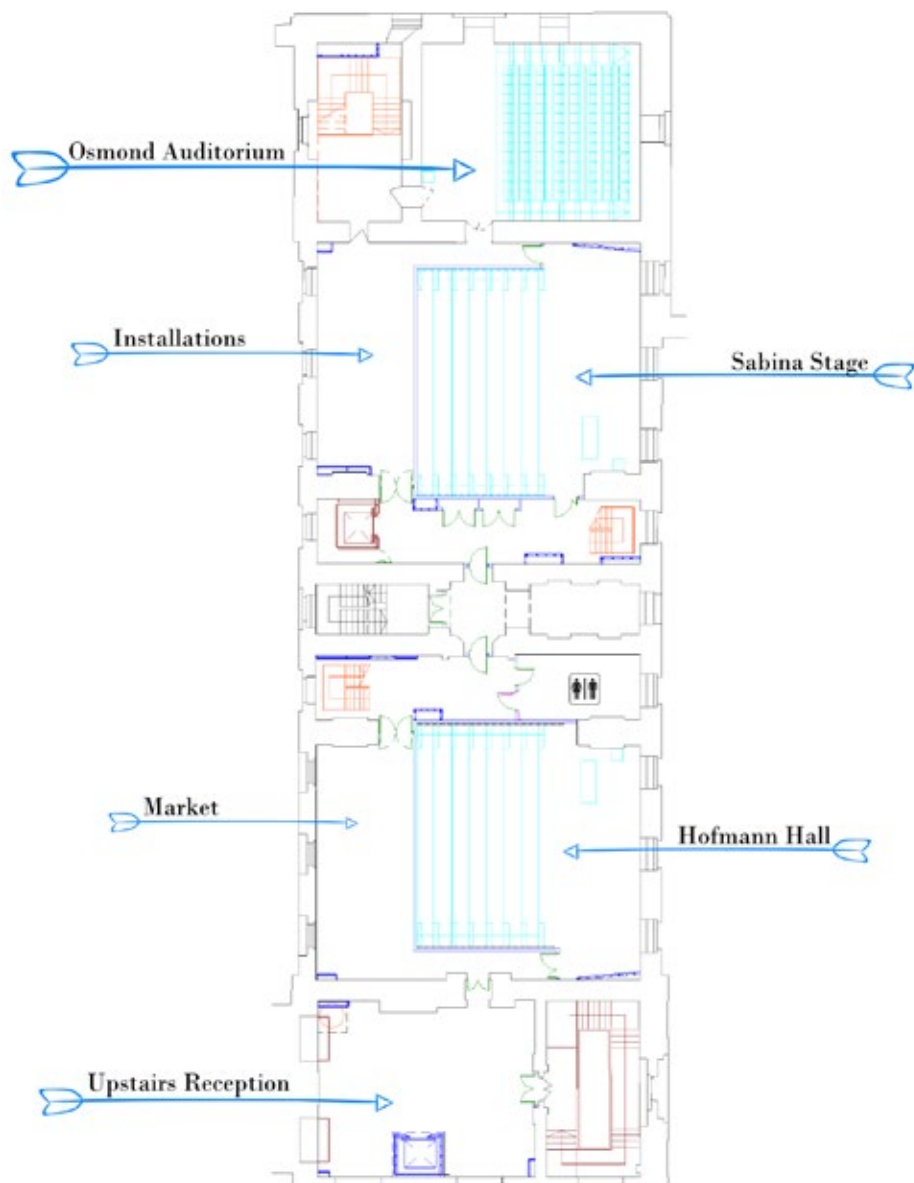
Map of local area

- 1 Breaking Convention - King William Building
- 2 Nites of Eleusis - Bar Latitude, Cooper Building
- 3 Nights of Delysid (accommodation) - Daniel Defoe Halls of Residence
- A Greenwich Market
- B Planetarium & Royal Observatory
- C National Maritime Museum & Gardens
- D The Cutty Sark & Ferries to Westminster

VENUE MAP GROUND FLOOR



VENUE MAP THIRD FLOOR



GENERAL INFO

Transport

There is transport information available on the website: (<http://2015.breakingconvention.co.uk/location/>). Further information is available from (www.tfl.gov.uk).

On-Site Accommodation

Those of you who have purchased accommodation will be staying in the brand new Daniel Defoe Hall, location a short walk from the conference site (1/2 mile). The address is 10 Lovibond Lane, London SE10 9FY (located near the corner of Waller Way and Greenwich High Road next to the Greenwich DLR station – if searching for the location online, you may wish to use SE10 8JA which is next to the hall as the actual postcode is new and may not register in searches).

The 177 bus towards Peckham Bus Station departs every 12 minutes from Romney Road (National Maritime Museum, Stop G). The third stop (Greenwich Station, Stop P) will drop you off about 100m from Daniel Defoe Hall.

Catering

Regrettably, there are no refreshments available in the conference centre during the weekend, but you are welcome to bring your own and there are numerous cafes around outside the University within easy walking distance. Many good places to eat locally are listed here: (www.visitgreenwich.org.uk/eating-and-drinking-in-greenwich).

If you are a tea or coffee addict, like several of us on the committee, you might consider bringing a flask of the black stuff to keep your blood-caffeine levels high, or be prepared for a short stroll to get your fix.

For vegans and vegetarians, try: Greenlands Wholefoods Unit, 3A, Greenwich Market, SE10 9HZ, or Royal Teas Cafe, 76 Royal Hill, Greenwich, SE10, 8RT.

Workshops

If you are doing one of the workshops, please consider bringing a blanket or yoga mat as the carpeted floor is not so comfortable.

Etiquette

Please enter lecture halls on time or silently from the back if you are coming in late. Police yourselves and remember that there are lots of journalists at the event, so you are representing the psychedelic research community.

Things to do

Take a ferry down the Thames for lunch (bring your sandwiches) on Saturday lunch-time. Ferries leave regularly and you can get to Westminster and back in two hours for about £15.

Head for the centre of time at the Observatory & Planetarium up the hill, visit the Queen's House, the Cutty Sark ship, or the Maritime Museum (www.rmg.co.uk).

THE TEAM

Directors: Cameron Adams, Dave King, David Luke, Ben Sessa, Aimee Tollan

Press: David Fuller

Sponsorship: Alexander Beiner, Ashleigh Murphy

Merchandise and Goodie Bags: Andy Roberts

Film Festiva: Paul Bloom, Stuart Heaney

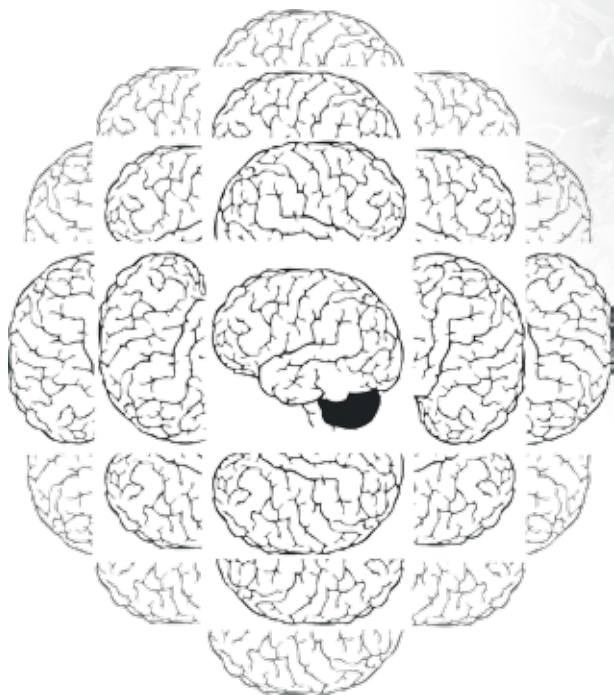
Film Production: Cara Lavan

Artwork: Stuart Griggs, Judith Way

Entertainments: Stuart Heaney, Adam Malone

Volunteers: Lara Mackie-Bland, Julian Vayne, Nikki Wyrd

Publishing & Social Media: Rob Dickins, Hattie Wells



NOTES





NOTES







10-12 July 2015

University of Greenwich, London

BREAKING CONVENTION

A Multidisciplinary Meeting On Psychedelic Consciousness

